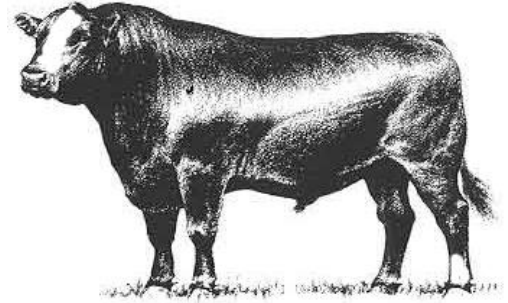


Hinds Community College Bull Test  
Mississippi Beef Cattle Improvement Association  
**2025 Spring Bull Sale**

**Thursday, March 6, 2025 • 12:00 Noon**  
**Hinds Community College**  
**1310 Seven Springs Road, Raymond, MS**



**MISSISSIPPI STATE UNIVERSITY™  
EXTENSION**

Dear Cattle Producers:

The Hinds Community College Bull Test and Mississippi Beef Cattle Improvement Association cattle marketing partnership is a proven source for breeding cattle that build profits. In today's cattle market, the payoffs from using quality herd sires make acquiring high-quality genetics a must for producers.

We recognize that quality bulls are essential to producing profitable calf crops. Time and time again our bull buyers cite the breed leading genetics, environmental adaptability, freight, and customer service advantages of purchasing bulls raised in Mississippi. All bulls in our spring sale are screened for structure, disposition, and performance and are guaranteed as breeders. These bulls have passed breeding soundness examinations, met minimum growth and scrotal circumference requirements, and represented quality genetics.

The sale will be broadcast live from the Raymond sale site over the Extension distance education system. A link to the sale site will be available at [extension.msstate.edu/beef](https://extension.msstate.edu/beef).

The cattle will be available for viewing at the Hinds Community College Sale Facility in Raymond, MS starting on the afternoon of March 5. BCIA members, breeders, and Extension personnel will be glad to assist you in selecting breeding cattle that will work well for your operation. We look forward to seeing you at the sale on March 6.

Sincerely,

Kenny Banes

Hinds Bull Test Manager

Brandi B. Karisch

Extension Beef Cattle Specialist

Cooperative Extension Service · Mississippi State University  
Box 9815 · Mississippi State, MS 39762-9815 · Office (662) 325-3516 · Fax (662) 325-8873

Mississippi State University, United States Department of Agriculture, Counties Cooperating  
Mississippi State University does not discriminate on the basis of race, color, religion, national origin, sex, age, disability, or veteran status.

### Consignors

- CMR Herefords
- Monogram Farms
- Verell Farms
- G&R Farms
- Fulper Angus Farm
- Mississippi State University
- R&K Cattle Co.
- YNOT Ranch LLC
- Pass Cattle co.



## Consignor Contact Information

---

### **Monogram Farms (Angus)**

Roland Preuss  
1614 Ford Road  
Terry, MS 39170  
601-878-5896

### **CMR Herefords (Hereford)**

Walt McKellar  
1680 LRL Road  
Senatobia, MS 38668  
662-292-1936

### **Verell Farms (Commercial Balancer)**

Tyler Gregory  
1203 Crisler Rd.  
Terry, MS 39170  
601-622-8581

### **G&R Farms (Angus)**

Gary Powell  
400 Franks Rd.  
Mantachie, MS 38855  
662-640-1957

### **Fulper Angus Farm (Angus)**

Chris, Jody, and Caroline Fulper  
PO Box 621  
Booneville, MS 38829  
662-416-4424 (Jody)  
662-210-4934 (Chris)

### **Mississippi State University Beef Unit (Angus)**

Alex Gardner & Brandi Karisch  
Box 9815  
Mississippi State, MS 39762  
662-418-5002 (Alex)  
225-717-3324 (Brandi)

### **R&K Cattle Co. (Angus and SimAngus)**

Mark Ryals and Mike Keene  
1090 Churchwell Rd.  
Hattiesburg, MS 39401  
601-270-4577 (Mark)  
601-606-7382 (Mike)

### **YNOT Ranch LLC (Gelbvieh Balancer)**

Ty Ladner  
334 Quitman Perry Rd.  
Carriere, MS 39426  
601-590-1935

### **Pass Cattle Co. (Angus)**

Larry Pass  
Water Valley, MS  
662-816-3110

## Terms, Conditions, and General

**TERMS:** Terms of the sale are cash. Settlements are to be made with the clerk immediately after the conclusion of the auction. The Mississippi Beef Cattle Improvement Association acts as an agent only. The contract is between the buyer and seller.

**BIDDING & DISPUTES:** All cattle will be sold at public auction to the highest bidder. The auctioneer will settle any disputes concerning bids, and auctioneer decisions will be final. *Auctioneer: Jarvene Shackelford - American Livestock Brokers: H: (662) 837-4904 | Mobile: (662) 837-1776*

**HEALTH:** Health papers from licensed veterinarians accompany cattle to the sale. It is the responsibility of the buyer to know the health restrictions of his/her state and be aware of the possibility of any subsequent testing of animals purchased through this sale as required by law.

**REGISTRATION:** All bulls have been registered with their respective breed associations. Properly signed certificate of registry transfers will be furnished to the buyer.

**BREEDING GUARANTEE:** Animals are guaranteed to be without defects, but nothing more.

**Bulls:** All sale bulls will have documentation of a passed breeding soundness exam, including scrotal measurements within 30 days prior to sale. Scrotal circumference measurement minimums for sale bulls are 32 cm for 12–16 month old bulls, 34 cm for 17–23 month old bulls, and 36 cm for 24+ month old bulls. Bulls failing to breed after a trial of six months may be returned to the seller, if in good condition. The seller reserves the right to try said animal for six months, and if he proves to be a breeder, to return him to the buyer at the buyer's expense. If the bull proves to be a non-breeder, a satisfactory exchange will be made or purchase price refunded.

## Sale Information

**ANNOUNCEMENTS:** Announcements made from the auction block on sale day shall take precedence over information printed in the catalog. It is therefore the buyer's responsibility to pay attention to any such announcements.

**PROCESSING FOR SALE:** Cattle are to be delivered to the sale location by 12:00 noon on March 5, 2025 (the day preceding the sale). Cattle will be weighed, beginning at 1:00 p.m. that day and available for viewing afterwards.

**SALE ORDER:** Hinds Bull Test Bulls will sell first based on an index (2 x WDA + 1 x ADG)/3. The MBCIA bulls will sell based on individual performance data, EPDs, general conformation and quality. A selection index based on the individual bull's score in the following categories will be used to rank bulls for determination of sale order (highest scoring will sell first); CE or BW EPD (max of 5 points), WW EPD (max. of 7.5 points), YW EPD (max. of 7.5 points), scrotal circumference (max. of 5 points), weight per day of age (max. of 15 points), IMF EPD (max of 5 points), REA EPD (max of 5 points), and visual appraisal (max. of 40 points). Five points will be added to a bull's selection index total if ultrasound scan results are provided.

**CATTLE REMOVAL:** Cattle purchased will be cared for 24 hours after the conclusion of the sale without charge. Arrangements for removal from grounds must be made at the conclusion of the 24 hours.

**LIABILITY:** All persons who attend this sale do so at their own risk. The owners and sponsors assume no responsibility, legal or otherwise, for any accidents that may occur.

# Explanation of Performance Records

## Expected Progeny Differences

Expected progeny differences are a useful genetic selection tool. They provide predictions of the expected performance of the calves sired by a bull compared to the expected performance of calves sired by other bulls of the same breed. They are calculated as part of national cattle evaluation programs and are based on the performance records of an individual animal, its relatives, and its progeny. Most breed associations publish EPDs on individual animals in sire summaries and searchable Internet databases. Breed associations also publish tables that show where individual animals rank within the breed for specific traits.

Expected progeny differences can be used to make herd genetic improvement in both commercial and seedstock operations. They should be used in conjunction with other selection criteria in a balanced approach to select herd sires with acceptable combinations of economically relevant traits that will complement cow herds and match market targets. Genetic improvement can mean increased weaning weights and growth performance, enhanced reproductive performance and better performance on the rail, all of which can enhance the profitability of a cattle operation. **Printed EPD values are accurate as of 2/15/2025.**

## Accuracy Values (ACC)

Expected progeny differences come with **accuracy values (ACC)** that give an indication of the reliability of the EPDs. Accuracy values help breeders determine the level of uncertainty or risk associated with selection decisions. They are reported as a decimal number between zero and one. Larger values indicate greater accuracy. Remember, EPDs can be directly compared regardless of accuracy. Accuracies simply reflect risk.

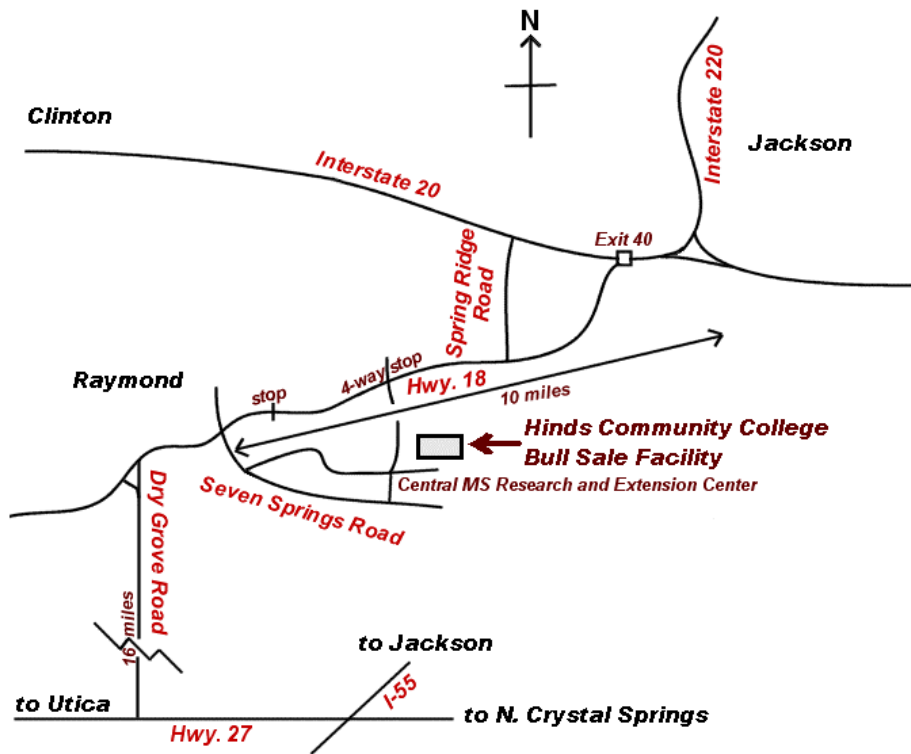
Expected change tables are published by breed associations as part of national cattle evaluations to show how much variation can be expected for EPDs at specific accuracy levels. As more usable performance information becomes available for an animal and its relatives and progeny, the more accurate or reliable its EPDs become. Thus, a young, unproven bull with no calves will have lower accuracy EPDs than a proven sire with hundreds of calf records.

## Spring 2025 EPD Percentile Rankings for Non-Parents

BREED	% RANKING	EPD							
		CE	Birth	Weaning	Yearling	Milk	Scrotal	Marb	REA
Angus	TOP 25%	10	0.1	72	127	30	1.26	0.92	0.82
	50%	7	1.2	64	112	27	0.88	0.66	0.65
	75%	3	2.4	55	98	23	0.48	0.43	0.48
Hereford	Top 25%	6.8	1.4	63	101	32	1.4	0.49	0.61
	50%	3.5	2.7	57	91	27	1.0	0.12	0.45
	75%	0.2	3.9	50	80	22	0.7	0.02	0.28
Gelbvieh	Top 25%	15	-1.4	77	119	26	0.8	0.42	0.7
	50%	13	-0.2	71	108	23	0.6	0.29	0.56
	75%	11	0.9	65	97	20	0.4	0.18	0.43
SimAngus	Top 25%	14.8	-1.4	84.1	132.4	26.5		0.56	0.79
	50%	12.7	0.10	76.7	119	23.6		0.38	-0.65
	75%	10.7	1.4	69.6	106.2	20.7		0.23	0.50

## Map to Sale Location

---



*Please join us next fall in Raymond for the 2025 Fall BCIA Bull and Heifer Sale on Thursday, November 6, 2025. Consignments due September 15.*

---



# Monogram Farms



## Monogram 115 Renown 273

1

ANGUS

Hinds  
Bull Test

Calved: 10/27/2023 Tattoo: 273 Reg. #: 21119596

S A V Renown 3439  
Monogram Renown 1158  
Monogram Duchess 582  
Monogram 46 BN 1156  
Monogram Elba 1539  
Monogram Elba 794

BW	Adj. WW	WW Ratio	Adj. YW	End Test Wt	Test WDA	WDA Ratio	Test ADG	ADG Ratio					
90	548		1094	1380	2.94	109	4.24	109					
CED	BW	WW	YW	RADG	YH	SC	Doc	HP	CEM	Milk	MW	MH	\$EN
EPD	-1	+3.0	+65	+107					+4	+28			-16
ACC	0.16	0.34	0.28	0.15					0.10	0.11			
CW	Marb	RE	Fat	\$M	\$W	\$F	\$G	\$B	\$C				
EPD	+54	+0.10	+0.69	+0.024	+70	+57	+86	+26	+112	+215			
ACC	0.17	0.15	0.15	0.15									

# Monogram Farms



## Monogram 153 Renown 171

2

ANGUS

Hinds  
Bull Test

Calved: 11/22/2023 Tattoo: 173 Reg. #: 21119592

Monogram Renown 1158  
Monogram 115 Renown 1531  
Monogram Elba 794  
S A V Renown 3439  
Monogram Rose 1918  
Monogram Rose 1396

BW	Adj. WW	WW Ratio	Adj. YW	End Test Wt	Test WDA	WDA Ratio	Test ADG	ADG Ratio					
80	595		1093	1310	2.96	110	3.93	101					
CED	BW	WW	YW	RADG	YH	SC	Doc	HP	CEM	Milk	MW	MH	\$EN
EPD	-2	+3.5	+80	+133					+3	+28			-31
ACC	0.32	0.31	0.25	0.14					0.08	0.09			
CW	Marb	RE	Fat	\$M	\$W	\$F	\$G	\$B	\$C				
EPD	+64	+0	+1.11	+0.010	+77	+65	+102	+27	+129	+244			
ACC	0.17	0.15	0.15	0.14									

# Monogram Farms



## Monogram 115 Renown 153

3

ANGUS

Hinds  
Bull Test

Calved: 11/10/2023 Tattoo: 153 Reg. #: 21119584

S A V Renown 3439  
Monogram Renown 1158  
Monogram Duchess 582  
S A V Brilliance 8077  
Monogram Elba 1385  
Monogram Elba 1063

BW	Adj. WW	WW Ratio	Adj. YW	End Test Wt	Test WDA	WDA Ratio	Test ADG	ADG Ratio					
82	540		1051	1290	2.84	105	4.06	105					
CED	BW	WW	YW	RADG	YH	SC	Doc	HP	CEM	Milk	MW	MH	\$EN
EPD	+0	+2.8	+71	+116					+4	+24			-15
ACC	0.17	0.34	0.28	0.18					0.11	0.12			
CW	Marb	RE	Fat	\$M	\$W	\$F	\$G	\$B	\$C				
EPD	+50	+0.15	+0.64	+0.023	+74	+59	+83	+28	+111	+218			
ACC	0.19	0.16	0.14	0.16									

# CMR Herefords



**CMR 21134 1606 Merit 418L ET**

**4**

**Hereford**

*Hinds  
Bull Test*

Calved: 1/20/2024 Tattoo: 418L Reg. #: P44601084

JW X651 TESTED 1857 ET  
JW 1857 MERIT 21134  
JW 33Z VICTORIA 19027  
HYALITE ON TARGET 936  
JW 936 VICTORIA 1606  
KCF MISS REVOLUTION X530

BW	Adj. WW	WW Ratio	Adj. YW	End Test Wt	Test WDA	WDA Ratio	Test ADG	ADG Ratio				
<b>73</b>			<b>1217</b>	<b>1280</b>	<b>3.33</b>	<b>98</b>	<b>4.20</b>	<b>115</b>				
EPD	CED	BW	WW	YW	DMI	Sust. Cow Fert	Milk	Milk & Growth	CEM	MW	Udder	Teat
ACC	0.32	0.46	0.42	0.42	0.14	0.30	0.24	64	0.32	0.31	0.39	0.40
EPD	CW	Marb	RE	Fat	BMI Index	BII Index	CHB Index					
ACC	0.23	0.24	0.23	0.28	373	484	153					

# CMR Herefords



**CMR H 033 GB869 Harvest 407L**

**5**

**Hereford**

*Hinds  
Bull Test*

Calved: 2/5/2024 Tattoo: 407L Reg. #: P44602256

SHF DAYBREAK Y02 D287 ET  
SHF HARVEST D287 H033 ET  
SHF TIME 001A D81  
/S MANDATE 66589 ET  
CMR Y620 MANDY G869 ET  
GV CMR 383R MISS P606 Y620 ET

BW	Adj. WW	WW Ratio	Adj. YW	End Test Wt	Test WDA	WDA Ratio	Test ADG	ADG Ratio				
<b>78</b>			<b>1304</b>	<b>1315</b>	<b>3.57</b>	<b>105</b>	<b>3.57</b>	<b>104</b>				
EPD	CED	BW	WW	YW	DMI	Sust. Cow Fert	Milk	Milk & Growth	CEM	MW	Udder	Teat
ACC	0.32	0.48	0.43	0.43	0.14	0.28	0.24	75	0.30	0.32	0.41	0.41
EPD	CW	Marb	RE	Fat	BMI Index	BII Index	CHB Index					
ACC	0.24	0.25	0.24	0.26	388	480	160					

# Monogram Farms



**Monogram 115 Renown 233**

**6**

**ANGUS**

*Hinds  
Bull Test*

Calved: 12/1/2023 Tattoo: 233 Reg. #: 21119595

S A V Renown 3439  
Monogram Renown 1158  
Monogram Duchess 582  
Monogram Renown 626  
Monogram Elba 1408  
Monogram Elba 473

BW	Adj. WW	WW Ratio	Adj. YW	End Test Wt	Test WDA	WDA Ratio	Test ADG	ADG Ratio						
<b>76</b>	<b>411</b>		<b>937</b>	<b>1100</b>	<b>2.53</b>	<b>94</b>	<b>4.29</b>	<b>120</b>						
EPD	CED	BW	WW	YW	RADG	YH	SC	Doc	HP	CEM	Milk	MW	MH	\$EN
ACC	0.16	0.34	0.29	0.17						0.10	0.11			-1
EPD	CW	Marb	RE	Fat	\$M	\$W	\$F	\$G	\$B	\$C				
ACC	0.19	0.16	0.17	0.16	+76	+48	+63	+27	+90	+193				



# CMR Herefords



7

**CMR 21134 200Z Merit 404L**

**Hereford**

Hinds  
Bull Test

Calved: 3/7/2024 Tattoo: 415L Reg. #: P44603932

JW X651 TESTED 1857 ET  
JW 1857 MERIT 21134  
JW 33Z VICTORIA 19027  
PW VICTOR BOOMER P606  
3D KYLLIE 200Z  
CJH MS ADVANCE 5136

BW	Adj. WW	WW Ratio	Adj. YW	End Test Wt	Test WDA	WDA Ratio	Test ADG	ADG Ratio
<b>77</b>			<b>1298</b>	<b>1180</b>	<b>3.50</b>	<b>103</b>	<b>3.04</b>	<b>83</b>

	CED	BW	WW	YW	DMI	Sust. Cow Fert	Milk	Milk & Growth	CEM	MW	Udder	Teat
EPD	<b>3.9</b>	<b>2.4</b>	<b>70</b>	<b>109</b>	<b>0.4</b>	<b>21.2</b>	<b>34</b>	<b>69</b>	<b>4.2</b>	<b>113</b>	<b>1.50</b>	<b>1.50</b>
ACC	0.16	0.24	0.22	0.21	0.08	0.15	0.14		0.16	0.16	0.22	0.22

	CW	Marb	RE	Fat	BMI Index	BII Index	CHB Index
EPD	<b>84</b>	<b>0.40</b>	<b>0.58</b>	<b>0.022</b>	<b>462</b>	<b>570</b>	<b>163</b>
ACC	0.03	0.03	0.03	0.03			

# Monogram Farms



8

**Monogram 115 Renown 1703**

**ANGUS**

Hinds  
Bull Test

Calved: 10/17/2023 Tattoo: 170 Reg. #: 21119616

S A V Renown 3439  
Monogram Renown 1158  
Monogram Duchess 582  
Monogram 212 Bismarck 41  
Monogram Elba 71  
Monogram Elba 100

BW	Adj. WW	WW Ratio	Adj. YW	End Test Wt.	Test WDA	WDA Ratio	Test ADG	ADG Ratio
<b>76</b>	<b>662</b>		<b>952</b>	<b>1225</b>	<b>2.56</b>	<b>95</b>	<b>3.30</b>	<b>85</b>

	CED	BW	WW	YW	RADG	YH	SC	Doc	HP	CEM	Milk	MW	MH	\$EN
EPD	<b>I+2</b>	<b>I+1.8</b>	<b>I+57</b>	<b>I+102</b>						<b>I+6</b>	<b>I+25</b>			<b>-13</b>
ACC	0.05	0.05	0.05	0.05						0.05	0.15			

	CW	Marb	RE	Fat	\$M	\$W	\$F	\$G	\$B	\$C
EPD	<b>+43</b>	<b>+0.38</b>	<b>+0.55</b>	<b>-0.012</b>	<b>+65</b>	<b>+48</b>	<b>+81</b>	<b>+41</b>	<b>+122</b>	<b>+223</b>
ACC	0.18	0.16	0.16	0.15						

## Verell Farms



### Balancer Bull Tag VF9

TAU Outright 162A  
TJB 220Y OUTRIGHT 5125D ET  
TJB Velvet 908U 220Y

9

### COMMERCIAL Gelbvieh Balancer

Commercial Angus Cow

Hinds  
Bull Test

Calved: 9/29/2023 Tattoo: 9 Non-registered

BW	Adj. WW	WW Ratio	Adj. YW	End Test Wt	Test WDA	WDA Ratio	Test ADG	ADG Ratio
			1116	1520	3.06	111	6.07	116

## Verell Farms



### Balancer Bull Tag VF8

TAU Outright 162A  
TJB 220Y OUTRIGHT 5125D ET  
TJB Velvet 908U 220Y

10

### COMMERCIAL Gelbvieh Balancer

Commercial Angus Cow

Hinds  
Bull Test

Calved: 8/24/2023 Tattoo: 8 Non-registered

BW	Adj. WW	WW Ratio	Adj. YW	End Test Wt	Test WDA	WDA Ratio	Test ADG	ADG Ratio
			1109	1620	3.04	110	5.58	107

## Verell Farms



### Balancer Bull Tag VF5

TAU Outright 162A  
TJB 220Y OUTRIGHT 5125D ET  
TJB Velvet 908U 220Y

11

### COMMERCIAL Gelbvieh Balancer

Commercial Angus Cow

Hinds  
Bull Test

Calved: 9/10/2023 Tattoo: 5 Non-registered

BW	Adj. WW	WW Ratio	Adj. YW	End Test Wt	Test WDA	WDA Ratio	Test ADG	ADG Ratio
			1061	1500	2.91	106	5.94	114

## Verell Farms



### Balancer Bull Tag VF2

TAU Outright 162A  
TJB 220Y OUTRIGHT 5125D ET  
TJB Velvet 908U 220Y

12

### COMMERCIAL Gelbvieh Balancer

Commercial Angus Cow

Hinds  
Bull Test

Calved: 9/1/2023 Tattoo: 2 Non-registered

BW	Adj. WW	WW Ratio	Adj. YW	End Test Wt	Test WDA	WDA Ratio	Test ADG	ADG Ratio
			977	1405	2.68	97	5.00	96

# Verell Farms



## Balancer Bull Tag VF12

# 13

Hinds  
Bull Test

### COMMERCIAL Gelbvieh Balancer

Calved: 9/7/2023 Tattoo: 12 Non-registered

TAU Outright 162A  
TJB 220Y OUTRIGHT 5125D ET  
TJB Velvet 908U 220Y

Commercial Angus Cow

BW	Adj. WW	WW Ratio	Adj. YW	End Test Wt	Test WDA	WDA Ratio	Test ADG	ADG Ratio
			932	1325	2.55	93	4.55	87

# Verell Farms



## Balancer Bull Tag VF7

# 14

Hinds  
Bull Test

### COMMERCIAL Gelbvieh Balancer

Calved: 9/16/2023 Tattoo: 7 Non-registered

TAU Outright 162A  
TJB 220Y OUTRIGHT 5125D ET  
TJB Velvet 908U 220Y

Commercial Angus Cow

BW	Adj. WW	WW Ratio	Adj. YW	End Test Wt	Test WDA	WDA Ratio	Test ADG	ADG Ratio
			830	1160	2.27	83	4.20	80

# YNOT Ranch LLC



## YNOT 80L

TAU MR IN FOCUS 22Z  
INFINITY 47C  
TAU MIA 363A  
SECRET BRAND 2100Z ET  
9406G  
6281D

### Lot 15

### GELBVIEW BALANCER

Calved: 1/9/2023 Tattoo: 80L Reg. #: 1578062

BW	Adj. WW	WW Ratio	Adj. YW	YW Ratio	Adj. IMF	IMF Ratio	Adj. REA	REA Ratio
60	617	88	841	93				

	CED	BW	WW	YW	Milk	TM	CEM	HP	PG30
EPD	+10	+0.4	+70	+106	+25	+60	+5	+10.82	-0.05
ACC	0.21	0.26	0.26	0.30	0.20		0.18	0.18	0.10

	STAY	DOC	SC	YG	CW	CREA	MARB	CFAT	FPI
EPD	+18	+7	+0.16	-0.10	+29	+0.49	+0.48	-0.01	81.61
ACC	0.14	0.16	0.17	0.16	0.22	0.19	0.23	0.15	

# YNOT Ranch LLC



## YNOT 79L

BENNETT E158  
TOP SHELF 150H ET  
MS GUNNISON 106R 3051A  
SECRET LINK 214D98  
W90H  
W1138F

### Lot 16

### GELBVIEW BALANCER

Calved: 1/9/2023 Tattoo: 79L Reg. #: 1578063

BW	Adj. WW	WW Ratio	Adj. YW	YW Ratio	Adj. IMF	IMF Ratio	Adj. REA	REA Ratio
57	653	94	894	99				

	CED	BW	WW	YW	Milk	TM	CEM	HP	PG30
EPD	+15	-1.0	+75	+116	+18	+55	+8	+5.25	-1.02
ACC	0.23	0.26	0.31	0.32	0.14		0.15	0.06	0.01

	STAY	DOC	SC	YG	CW	CREA	MARB	CFAT	FPI
EPD	+12	+12	+0.85	-0.32	+37	+0.90	+0.20	-0.06	81.44
ACC	0.12	0.18	0.15	0.16	0.22	0.19	0.12	0.13	

# YNOT Ranch LLC



## YNOT 76L

NEW FRONTIER 33A ET  
AMERICAN OUTLAW  
MISS FORTUNE C015 ET  
SECRET BRAND 2100Z ET  
9402G  
5254C

### Lot 17

### GELBVIEW BALANCER

Calved: 1/6/2023 Tattoo: 76L Reg. #: 1578057

BW	Adj. WW	WW Ratio	Adj. YW	YW Ratio	Adj. IMF	IMF Ratio	Adj. REA	REA Ratio
52	654	106	851	100				

	CED	BW	WW	YW	Milk	TM	CEM	HP	PG30
EPD	+10	+2.0	+79	+117	+14	+53	+6	+11.59	+2.06
ACC	0.19	0.29	0.26	0.26	0.16		0.14	0.08	0.05

	STAY	DOC	SC	YG	CW	CREA	MARB	CFAT	FPI
EPD	+14	+10	+0.69	-0.12	+42	+0.59	+0.52	-0.03	85.21
ACC	0.13	0.18	0.130	0.13	0.18	0.16	0.14	0.12	

# G&R Farms



**G294 ROCK**

**ANGUS**

Calved: 12/12/2023 Tattoo: G294 Reg. #: 21112724

DEER VALLEY GROWTH FUND  
EXAR STOCK FUND  
EXAR EMPRESS 0875  
MUSGRAVE 316 EXCLUSIVE  
GR58 MARNIE  
SSP HERMIONE 9061 K241

**Lot 18**

BW	Adj. WW	WW Ratio	Adj. YW	YW Ratio	Adj. IMF	IMF Ratio	Adj. REA	REA Ratio						
<b>64</b>	<b>576</b>	<b>99</b>	<b>1362</b>	<b>118</b>										
	CED	BW	WW	YW	RADG	DMI	YH	SC	HP	CEM	Milk	MW	MH	\$EN
EPD	<b>+12</b>	<b>+0.7</b>	<b>+83</b>	<b>+160</b>	<b>+0.35</b>	<b>+1.84</b>	<b>+0.5</b>	<b>-0.03</b>	<b>+11.3</b>	<b>+6</b>	<b>+27</b>	<b>+115</b>	<b>+0.6</b>	<b>-43</b>
ACC	0.36	0.55	0.47	0.42	0.32	0.32	0.46	0.40	0.24	0.32	0.33	0.38	0.41	
	CW	Marb	RE	Fat	\$M	\$W	\$F	\$G	\$B	\$C				
EPD	<b>+60</b>	<b>+0.61</b>	<b>+0.93</b>	<b>-0.015</b>	<b>48</b>	<b>73</b>	<b>99</b>	<b>56</b>	<b>156</b>	<b>250</b>				
ACC	0.40	0.38	0.36	0.34										

# G&R Farms



**G289 BASIN**

**ANGUS**

Calved: 9/03/2023 Tattoo: G289 Reg. #: 21145261

DEER VALLEY GROWTH FUND  
EXAR STOCK FUND 9097B  
EXAR EMPRESS 0875  
SPRING COVE PAYGRADE 5064  
GR73 BIG EYE RITA  
BLACK LADY GR67

**Lot 19**

BW	Adj. WW	WW Ratio	Adj. YW	YW Ratio	Adj. IMF	IMF Ratio	Adj. REA	REA Ratio						
<b>75</b>	<b>581</b>	<b>100</b>	<b>1263</b>	<b>100</b>										
	CED	BW	WW	YW	RADG	DMI	YH	SC	HP	CEM	Milk	MW	MH	\$EN
EPD	<b>I+7</b>	<b>I+1.8</b>	<b>I+79</b>	<b>I+134</b>	<b>I+0.28</b>	<b>I+1.03</b>	<b>I+0.4</b>	<b>I+1.02</b>	<b>I+13.1</b>	<b>I+3</b>	<b>I+29</b>	<b>I+70</b>	<b>I+0.3</b>	<b>-22</b>
ACC	0.05	0.05	0.05	0.05	0.05	0.05	0.05	0.05	0.05	0.05	0.05	0.05	0.05	
	CW	Marb	RE	Fat	\$M	\$W	\$F	\$G	\$B	\$C				
EPD	<b>I+56</b>	<b>I+0.76</b>	<b>I+0.98</b>	<b>I+0.009</b>	<b>68</b>	<b>80</b>	<b>102</b>	<b>62</b>	<b>164</b>	<b>281</b>				
ACC	0.05	0.05	0.05	0.05										

# MSU Beef Unit



**MSU Justified L170**

**ANGUS**

Calved: 10/22/2023 Tattoo: L170 Reg. #: 20847240

GDAR JUSTIFIED 914  
RC JUSTIFIED J129  
RC MISS SHAMROCK E107  
BASIN EXCITEMENT  
MSU BLACKBIRD E074  
MSU BLACKBIRD 4233 Z103

**Lot 20**

BW	Adj. WW	WW Ratio	Adj. YW	YW Ratio	Adj. IMF	IMF Ratio	Adj. REA	REA Ratio						
<b>90</b>	<b>613</b>	<b>115</b>	<b>1005</b>	<b>107</b>	<b>2.45</b>	<b>90</b>	<b>15.3</b>	<b>120</b>						
	CED	BW	WW	YW	RADG	DMI	YH	SC	HP	CEM	Milk	MW	MH	\$EN
EPD	<b>+4</b>	<b>+1.8</b>	<b>+69</b>	<b>+112</b>	<b>+0.21</b>	<b>+0.78</b>	<b>+0.7</b>	<b>+0.10</b>	<b>+14.5</b>	<b>+11</b>	<b>+29</b>	<b>+47</b>	<b>+0.4</b>	<b>-10</b>
ACC	0.32	0.54	0.45	0.40	0.30	0.30	0.44	0.46	0.20	0.26	0.29	0.37	0.40	
	CW	Marb	RE	Fat	\$M	\$W	\$F	\$G	\$B	\$C				
EPD	<b>+46</b>	<b>+0.13</b>	<b>+0.75</b>	<b>+0.017</b>	<b>86</b>	<b>73</b>	<b>83</b>	<b>29</b>	<b>112</b>	<b>231</b>				
ACC	0.38	0.36	0.35	0.33										

# MSU Beef Unit



## MSU JUSTIFIED L167

ANGUS

Calved: 10/18/2023 Tattoo: L167 Reg. #: 20847238

GDAR JUSTIFIED 914  
 RC JUSTIFIED J129  
 RC MISS SHAMROCK E107  
 S A V FINAL ANSWER 0035  
 MSU BLACKBIRD C088  
 MSU BLACKBIRD U155

### Lot 21

BW	Adj. WW	WW Ratio	Adj. YW	YW Ratio	Adj. IMF	IMF Ratio	Adj. REA	REA Ratio						
78	580	109	1033	110	2.31	85	12.9	101						
	CED	BW	WW	YW	RADG	DMI	YH	SC	HP	CEM	Milk	MW	MH	\$EN
EPD	+1	+3.1	+73	+132	+0.30	+0.94	+0.9	+1.53	+19.1	+8	+29	+88	+0.7	-31
ACC	0.32	0.54	0.45	0.40	0.30	0.30	0.44	0.46	0.20	0.26	0.29	0.37	0.40	
	CW	Marb	RE	Fat	\$M	\$W	\$F	\$G	\$B	\$C				
EPD	+50	+0.33	+0.65	+0.014	65	64	91	37	129	232				
ACC	0.37	0.35	0.34	0.32										

# MSU Beef Unit



## MSU JUSTIFIED L163

ANGUS

Calved: 10/15/2023 Tattoo: L163 Reg. #: 20847236

GDAR JUSTIFIED 914  
 RC JUSTIFIED J129  
 RC MISS SHAMROCK E107  
 S A V RESOURCE 1441  
 MSU TRAVELER F071  
 MSU TRAVELER A091

### Lot 22

BW	Adj. WW	WW Ratio	Adj. YW	YW Ratio	Adj. IMF	IMF Ratio	Adj. REA	REA Ratio						
78	566	106	961	102	2.03	74	12.2	95						
	CED	BW	WW	YW	RADG	DMI	YH	SC	HP	CEM	Milk	MW	MH	\$EN
EPD	+2	+2	+73	+127	+0.25	+1.33	+0.6	+2.26	+15.6	+3	+35	+68	+0.4	-24
ACC	0.31	0.53	0.44	0.39	0.30	0.30	0.43	0.46	0.20	0.26	0.28	0.37	0.39	
	CW	Marb	RE	Fat	\$M	\$W	\$F	\$G	\$B	\$C				
EPD	+57	+0.04	+0.35	+0.044	75	77	97	20	117	227				
ACC	0.37	0.35	0.34	0.32										

# MSU Beef Unit



## MSU TAHOE L114

ANGUS

Calved: 9/18/2023 Tattoo: L114 Reg. #: 20939497

TEHAMA UPWARD Y238  
 TEHAMA TAHOE B767  
 TEHAMA MARY BLACKBIRD Y684  
 TPC 303  
 TPC MISS RELENTLESS 528  
 R&R BLACKBIRD 1158

### Lot 23

BW	Adj. WW	WW Ratio	Adj. YW	YW Ratio	Adj. IMF	IMF Ratio	Adj. REA	REA Ratio						
74	585	110	998	107	3.77	138	15.3	120						
	CED	BW	WW	YW	RADG	DMI	YH	SC	HP	CEM	Milk	MW	MH	\$EN
EPD	+11	-0.6	+85	+145	+0.27	+1.84	+0.6	+0.93	+12.2	+6	+28	+37	+0.5	-5
ACC	0.34	0.54	0.46	0.41	0.33	0.33	0.45	0.46	0.24	0.30	0.33	0.40	0.43	
	CW	Marb	RE	Fat	\$M	\$W	\$F	\$G	\$B	\$C				
EPD	+64	+1.12	+1.01	-0.004	97	94	101	81	182	333				
ACC	0.39	0.38	0.37	0.35										

# MSU Beef Unit



## MSU TAHOE L092

TEHAMA UPWARD Y238  
 TEHAMA TAHOE B767  
 TEHAMA MARY BLACKBIRD Y684  
 HOOVER COUNSELOR N29  
 MSU FOREVER LADY J131  
 MSU FOREVER LADY G082

### Lot 24

### ANGUS

Calved: 9/05/2023 Tattoo: L092 Reg. #: 20939483

BW	Adj. WW	WW Ratio	Adj. YW	YW Ratio	Adj. IMF	IMF Ratio	Adj. REA	REA Ratio						
65	561	105	991	106	3.46	127	14.0	109						
	CED	BW	WW	YW	RADG	DMI	YH	SC	HP	CEM	Milk	MW	MH	\$EN
EPD	+7	+1.3	+68	+115	+0.23	+0.72	+0.7	+1.04	+16.1	+6	+28	+43	+0.1	-8
ACC	0.36	0.52	0.45	0.40	0.32	0.32	0.43	0.45	0.24	0.30	0.31	0.39	0.42	
	CW	Marb	RE	Fat	\$M	\$W	\$F	\$G	\$B	\$C				
EPD	+44	+1.15	+0.31	+0.033	82	72	86	71	157	286				
ACC	0.38	0.36	0.36	0.34										

# Fulper Angus Farm



## FULPER GRATITUDE L29

CASINO BOMBER N33  
 K C F BENNETT EXPONENTIAL  
 K C F MISS SOUTHSIDE B226  
 A A R TEN X 7008 S A  
 FULPER ENTELLA 081  
 FULPER ENTELLA 138

### Lot 25

### ANGUS

Calved: 11/05/2023 Tattoo: L29 Reg. #: 21043786

BW	Adj. WW	WW Ratio	Adj. YW	YW Ratio	Adj. IMF	IMF Ratio	Adj. REA	REA Ratio						
70	638	105												
	CED	BW	WW	YW	RADG	DMI	YH	SC	HP	CEM	Milk	MW	MH	\$EN
EPD	+11	+1	+71	+128	+0.29	+1.42	+0.8	+1.98	+10.4	+13	+36	+102	+0.7	-42
ACC	0.34	0.52	0.43	0.37	0.31	0.31	0.43	0.38	0.25	0.30	0.31	0.36	0.39	
	CW	Marb	RE	Fat	\$M	\$W	\$F	\$G	\$B	\$C				
EPD	+72	+0.95	+0.85	-0.036	44	72	119	73	192	293				
ACC	0.38	0.36	0.35	0.33										

# Fulper Angus Farm



## FULPER GOALKEEPER L22

SYDGEN ENHANCE  
 BALDRIDGE SR GOALKEEPER  
 BALDRIDGE ISABEL E030  
 BALDRIDGE COLONEL C251  
 CCC LUCY 062  
 CCC LUCY 1122

### Lot 26

### ANGUS

Calved: 7/18/2023 Tattoo: L22 Reg. #: 21043781

BW	Adj. WW	WW Ratio	Adj. YW	YW Ratio	Adj. IMF	IMF Ratio	Adj. REA	REA Ratio						
80	768	100												
	CED	BW	WW	YW	RADG	DMI	YH	SC	HP	CEM	Milk	MW	MH	\$EN
EPD	-3	+4.3	+80	+152	+0.34	+1.84	+0.7	+1.57	+8.2	+1	+29	+95	+0.7	-34
ACC	0.36	0.52	0.41	0.37	0.31	0.31	0.43	0.38	0.25	0.31	0.32	0.37	0.40	
	CW	Marb	RE	Fat	\$M	\$W	\$F	\$G	\$B	\$C				
EPD	+57	+0.66	+0.86	-0.004	53	65	95	57	152	250				
ACC	0.35	0.35	0.33	0.31										





# R&K Cattle Co.



**R AND K'S HICKOK**

**G A R RELIANT**  
**R AND K'S RELIANT**  
**MISS JRW 5066A**  
**S D S GRADUATE 006X**  
**R AND K'S COWGIRL**  
**RYALS MISS A105**

**SIMANGUS**

Calved: 11/07/2023 Tattoo: L31 Reg. #: 4409012

**Lot 30**

BW	Adj. WW	WW Ratio	Adj. YW	YW Ratio	Adj. IMF	IMF Ratio	Adj. REA	REA Ratio
<b>72</b>	<b>712</b>	<b>107</b>	<b>948</b>	<b>100</b>				

	CE	BW	WW	YW	ADG	MCE	Milk	MWW	Stay	Doc
EPD	<b>+13.1</b>	<b>+0.3</b>	<b>+81.5</b>	<b>+128.1</b>	<b>+0.29</b>	<b>+6.1</b>	<b>+25.7</b>	<b>+66.4</b>	<b>+16.3</b>	<b>+11.9</b>
ACC	0.19	0.28	0.27	0.28	0.28	0.14	0.12	0.19	0.12	0.14

	CW	YG	Marb	BF	REA	SF	API	TI
EPD	<b>+46.1</b>	<b>-0.21</b>	<b>+0.38</b>	<b>-0.036</b>	<b>+0.86</b>	<b>-0.4</b>	<b>139.6</b>	<b>84.3</b>
ACC	0.18	0.14	0.14	0.13	0.17	0.02		

# Pass Cattle Co.



**PCC Patraich EXT Rampage**

**S S Niagara Z29**  
**Tehama Patriarch F028**  
**Tehama Elite Blackbird D826**  
**Quaker Hill Rampage 0A36**  
**PCC Focus EXT Rampage 0836**  
**PCC Focus 878 EXT B41**

**ANGUS**

Calved: 08/26/2023 Tattoo: L31 Reg. #: 20975502

**Lot 31**

BW	Adj. WW	WW Ratio	Adj. YW	YW Ratio	Adj. IMF	IMF Ratio	Adj. REA	REA Ratio
<b>75</b>								

	CED	BW	WW	YW	RADG	DMI	YH	SC	HP	CEM	Milk	MW	MH	\$EN
EPD	<b>+7</b>	<b>+0.8</b>	<b>+80</b>	<b>+143</b>	<b>+0.30</b>	<b>+1.67</b>	<b>+0.7</b>	<b>+0.77</b>	<b>+16.3</b>	<b>+14</b>	<b>+23</b>	<b>+95</b>	<b>+0.6</b>	<b>-31</b>
ACC	0.32	0.47	0.40	0.36	0.30	0.30	0.41	0.36	0.25	0.29	0.31	0.36	0.39	

	CW	Marb	RE	Fat	\$M	\$W	\$F	\$G	\$B	\$C
EPD	<b>+58</b>	<b>+0.38</b>	<b>+0.80</b>	<b>+0.013</b>	<b>62</b>	<b>72</b>	<b>100</b>	<b>42</b>	<b>142</b>	<b>246</b>
ACC	0.36	0.35	0.34	0.32						

# Pass Cattle Co.



**PCC Prime Star Blackcap**

**N Bar Prime Time D806**  
**Gardens Prime Star**  
**Green Garden Jilt C242 S1**  
**Mytty In Focus**  
**PCC Blackcap Focus**  
**PCC Blackcap Denny**

**ANGUS**

Calved: 09/04/2023 Tattoo: L33 Reg. #: 20975411

**Lot 32**

BW	Adj. WW	WW Ratio	Adj. YW	YW Ratio	Adj. IMF	IMF Ratio	Adj. REA	REA Ratio
<b>54</b>								

	CED	BW	WW	YW	RADG	DMI	YH	SC	HP	CEM	Milk	MW	MH	\$EN
EPD	<b>+10</b>	<b>+0.6</b>	<b>+46</b>	<b>+88</b>	<b>+0.22</b>	<b>+0.62</b>	<b>+0</b>	<b>+0.75</b>	<b>+11.6</b>	<b>+13</b>	<b>+24</b>	<b>-19</b>	<b>-0.3</b>	<b>+19</b>
ACC	0.34	0.50	0.42	0.37	0.33	0.33	0.43	0.39	0.25	0.31	0.33	0.38	0.41	

	CW	Marb	RE	Fat	\$M	\$W	\$F	\$G	\$B	\$C
EPD	<b>+31</b>	<b>+1.47</b>	<b>-0.02</b>	<b>+0.087</b>	<b>77</b>	<b>52</b>	<b>82</b>	<b>79</b>	<b>160</b>	<b>285</b>
ACC	0.38	0.37	0.36	0.34						

