

# Mississippi Beef Cattle Improvement Association

Mississippi Beef Cattle Improvement Association—Productivity and Quality



## Upcoming events:

- October 21—MS Fed Beef Conference, MSU Meats Lab
- October 27—MAFES White Sand Unit beef and forage field day, Poplarville, MS
- October 27-29—MSU Artificial Insemination School, Mississippi State, MS
- December 1—Herd Health Management Short Course, MSU, Biloxi, Oxford, Raymond
- January 20—Mississippi BCIA Spring Bull Sale nomination deadline
- March 1—Hinds CC Bull Test Sale and Mississippi BCIA Spring Bull Sale, Hinds Community College Bull Sale Facility, Raymond, MS
- March 13—Beef Cattle Handling Facilities Workshop, MSU, Biloxi, Oxford, Raymond

## Inside this issue:

MAFES White Sand Unit Field Day	2
Bull Sales Update	2
Computer and Internet Usage	3
Hay Needed	3
MBCIA Membership Application	4
Estrus Synchronization Protocols	4

## MSU Welcomes New Extension Beef Cattle Specialist

Dr. Brandi Bourg started work as an Extension Beef Cattle Specialist with the Mississippi State University Extension Service on September 1, 2011. She was raised in South Louisiana and has degrees from Louisiana State University and Texas A&M University.

Dr. Bourg is based in Starkville and has statewide Extension responsibilities in stocker cattle production education programs. In particular, she will assume leadership for Extension programs in the following areas:

- Stocker Cattle Management
- Feeder Calf Board Sales

- Miss Premium Heifer Development
  - Mississippi Farm to Feedlot Program
  - Deep South Stocker Conference
- Dr. Bourg's contact information is as follows:

Animal & Dairy Sciences, Box 9815  
Mississippi State, MS 39762  
Office: 662-325-7465  
Fax: 662-325-8873  
E-mail: [bbourg@ads.msstate.edu](mailto:bbourg@ads.msstate.edu)

Look for Brandi at many Mississippi Beef Cattle Improvement Association events in the near future, and please help welcome her to Mississippi.

## Missed the Genetics Learn at Lunch? View It Online Anytime

The Beef Cattle Genetics Learn at Lunch sessions presented throughout September 2011 are now available online for anytime viewing at:

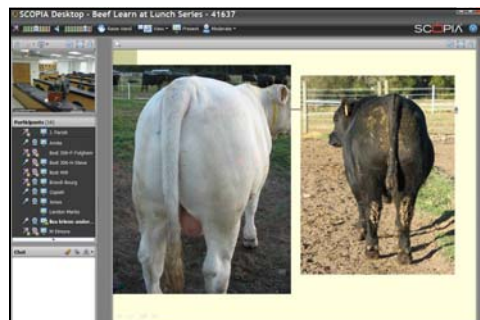
[msucares.com/livestock/beef/beefsc.html](http://msucares.com/livestock/beef/beefsc.html)

Log on to this website to access videos of the presentations. Slides are also available on the website for viewing or printing.

The Beef Cattle Genetics Learn at Lunch program was sponsored by the Mississippi and Alabama Beef Cattle Improvement Associations as well as the Extension Services in both states.

Sessions archived online include:

- Records for Genetic Improvement
- Computerized Record Keeping
- Genetic Selection Tools



- Improving Female Genetics
- Bull Buying Decisions
- Stocker Cattle Genetics
- Industry Trends and Lessons
- New Genetic Tools

The sessions feature speakers from land-grant universities across the U.S. Anyone without access to a high-speed Internet connection can request a CD of the sessions by contacting Mari Quinn in the MSU Animal and Dairy Sciences Department at (662) 325-3516 or [mquinn@ads.msstate.edu](mailto:mquinn@ads.msstate.edu).

## MAFES White Sand Unit Field Day—October 27



A wide variety of beef cattle research projects are being conducted at the MAFES White Sand Unit near Poplarville, MS

A beef cattle field day will be hosted on Thursday, October 27, 2011 at the Mississippi Agricultural and Forestry Experiment Station White Sand Branch Unit. The field day will highlight beef cattle research projects at the station.

### Research Highlights:

- Value-added gin trash/mote cattle feed
- Soybeans as a summer crop prior to annual ryegrass establishment
- Nitrogen supplementation to beef cattle grazing summer pastures
- Implant management of beef calves
- Protein supplementation to calves fed annual ryegrass baleage
- Metabolic and physiological changes in abruptly weaned beef cattle
- Clover demonstration plots
- Distiller's solubles from an ethanol plant as a feed for beef cattle

Guest speakers will also address other topics relevant to Mississippi beef cattle producers. Dr. Brandi Bourg will discuss stocker cattle Extension programs such as the Miss Premium Heifer Development Program, Feeder Calf Board Sale Program, Mississippi Farm to Feedlot Program, and Deep South Stocker Conference.

Registration is at 9:00 a.m., and the program will start at 9:30 a.m. There is no registration fee, and lunch will be provided. If you have any questions, please contact Dr. Daniel Rivera at (601) 403-8777.

The White Sand Unit is located approximately 10 miles west of Poplarville, MS on Highway 26.



## Bull Sales Update

Due to insufficient consignments, the Fall Mississippi Beef Cattle Improvement Association Bull and Heifer Sale has been cancelled. The next MBCIA Bull Sale will be conducted in conjunction with the annual Hinds Community College Bull Test Sale.

The two sales will be held back as in years past starting at noon on Thursday, March 1, 2012, at the Hinds Community College cattle sale facility in Raymond, Mississippi. This upcoming year will be the 4th annual event for the two sales working together to present one high-quality, performance-back bull offering to the public.

Producers interested in testing bulls on the 2011-2012 Hinds Community College Bull Test should contact Kenny Banes as soon as possible at (601) 857-3351 to enroll bulls on the test this month. Bulls

completing the Hinds Bull Test and meeting certain specifications determined by test management will be eligible to sell in the March 1 sale. The bull test websites are:

[www.hindsc.edu/Departments/agriculture/Bull\\_Test\\_Station.aspx](http://www.hindsc.edu/Departments/agriculture/Bull_Test_Station.aspx)

[msucare.com/livestock/beef/mbcia/hindstest.html](http://msucare.com/livestock/beef/mbcia/hindstest.html)

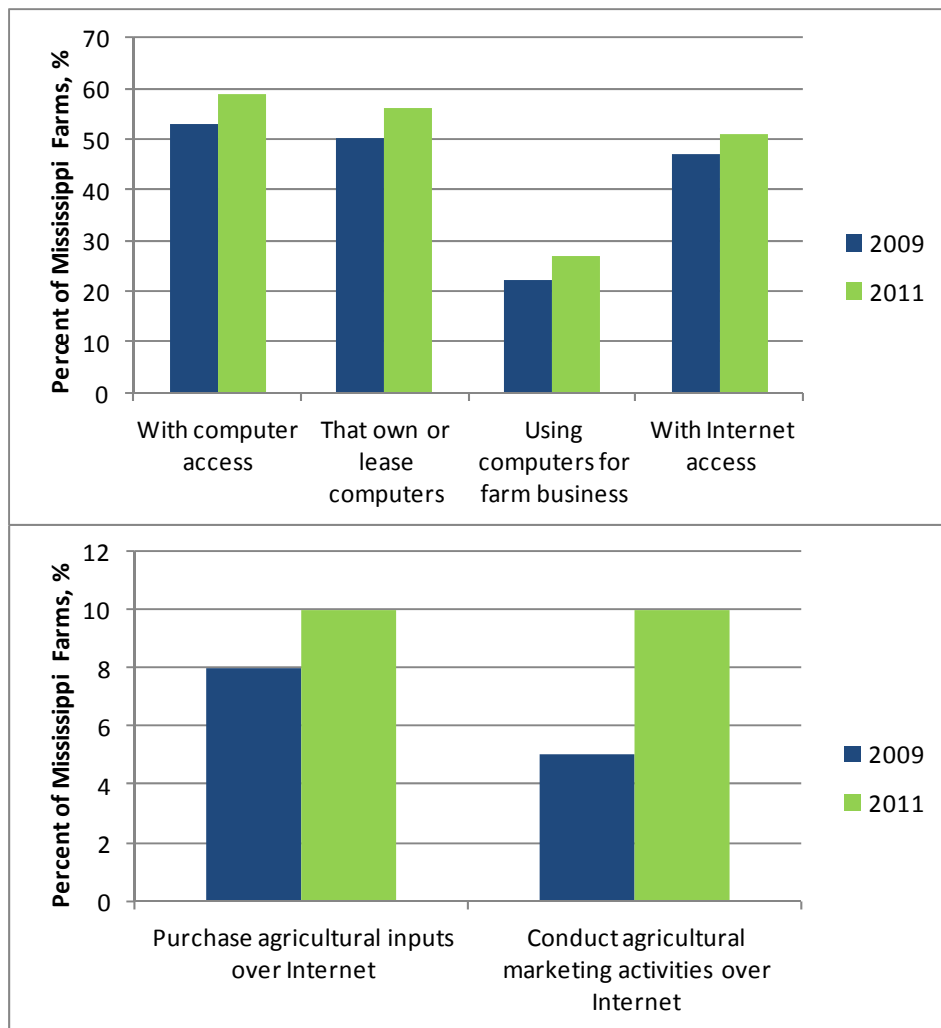
Producers who develop bulls on-farm or through a centralized test that meet the MBCIA sale requirements are eligible to sell as part of the MBCIA Spring Bull Sale on March 1. Contact Jane Parish at (662) 325-7466 for more information. The nomination deadline is January 20, 2012. Sale rules, nomination forms, and other useful information are on the following website:

[msucare.com/livestock/beef/mbcia/bcia\\_bullsale.html](http://msucare.com/livestock/beef/mbcia/bcia_bullsale.html)



*"...Make plans now to test bulls on a centralized bull test and to meet sale eligibility requirements for the spring 2012 sales."*

## Mississippi Farm Computer and Internet Usage on the Rise



*“...High-speed Internet access throughout Mississippi has increased dramatically in recent years.”*

Source: Mississippi Agricultural Statistics Service, 2011

## Hay Needed

Drought conditions persist in much of the Western United States. Several Mississippi producers have offered hay to fellow producers in the affected areas. Contact the Mississippi Cattlemen’s Association for help in coordinating donations. Anyone with excess hay for sale should list it in the Mississippi Hay Directory or Mississippi Market Bulletin.

**Mississippi Hay Directory**  
[msucare.com/livestock/beef/mshay.html](http://msucare.com/livestock/beef/mshay.html)

**Mississippi Market Bulletin**  
[www.msmarketbulletin.org](http://www.msmarketbulletin.org)

The Texas Department of Agriculture (TDA) Hay and Grazing Hotline is a service to the agricultural industry to help in locate forage and hay supplies. Producers with hay to sell or donate can list their location and quantity at the TDA website. There are restrictions on noxious weeds and a fire ant quarantine is some Texas counties.

**Texas Department of Agriculture Hay and Grazing Hotline**  
[gotexan.org/hayhotlinehome.aspx](http://gotexan.org/hayhotlinehome.aspx)

The TDA website also contains links to a hay value calculator and a hay hauling calculator.



Mississippi producers interested in supplying hay to Texas producers can list their information on the Texas Department of Agriculture website

Mississippi Beef Cattle Improvement Association—Productivity and Quality

Mississippi Beef Cattle Improvement Assn.  
Box 9815  
Mississippi State, MS 39762

Phone: 662-325-7466  
Fax: 662-325-8873  
Email: jparish@ads.msstate.edu



Send questions or comments to  
Jane Parish, Extension Beef Cattle Specialist,  
Mississippi State University Extension Service

*Joe Parish*



Mississippi State University does not discriminate on the basis of race, color, religion, national origin, sex, sexual orientation or group affiliation, age, disability, or veteran status.

Visit MBCIA online at  
<http://msucares.com/livestock/beef/mbcia/>

## MBCIA Membership Application

Name: \_\_\_\_\_

Address: \_\_\_\_\_

City: \_\_\_\_\_

County: \_\_\_\_\_ State: \_\_\_\_\_ Zip: \_\_\_\_\_

Phone: \_\_\_\_\_ Email: \_\_\_\_\_

(Check one) Seedstock:  Commercial:

Cattle breed(s): \_\_\_\_\_

Completed applications and \$5 annual dues or \$100 life-time dues payable to Mississippi BCIA should be mailed to:

Mississippi Beef Cattle Improvement Association  
Jane Parish, Extension Beef Cattle Specialist  
Box 9815, Mississippi State, MS 39762

## Estrus Synchronization Protocols and Training Available

The Beef Reproduction Task Force is a multi-state extension activity that focuses on providing educational information on beef cattle reproduction. Each year this group publishes updated beef cow and heifer estrus synchronization protocols based on the latest research information. The 2011 protocols are available online at:

[beefrepro.unl.edu/resources.html](http://beefrepro.unl.edu/resources.html)

The Mississippi State University Extension Service keeps information current on this subject in MSU-ES Publication 2614, "Estrus Synchronization in Cattle". This and other beef cattle reproduction publications are available on the Internet at:

[msucares.com/livestock/beef/beefpubs.html](http://msucares.com/livestock/beef/beefpubs.html)

Three interactive estrus synchronization courses produced by the Cattle Learning Center are available online at: [animalsciences.missouri.edu/extension/beef/estrus\\_synch/](http://animalsciences.missouri.edu/extension/beef/estrus_synch/)

Topics covered in these courses include:

- Physiological principles that underlie estrus synchronization
- An overview of commercially available estrus synchronization products
- Specific estrus synchronization protocols currently recommended for beef heifers and cows

- Management considerations for implementing an estrus synchronization program in your herd
- A description of the impact of estrus synchronization on reproductive management

