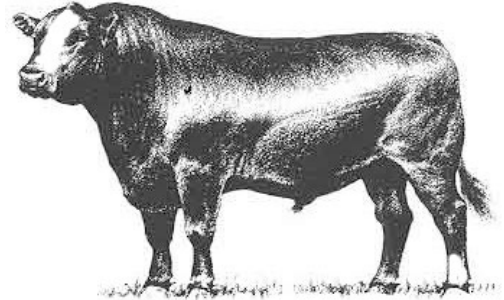


Mississippi Beef Cattle Improvement Association

# 2023 Fall Bull and Heifer Sale

Thursday, November 2, 2023 • 12:00 Noon  
Hinds Community College  
1310 Seven Springs Road, Raymond, MS



MISSISSIPPI STATE UNIVERSITY™  
EXTENSION

Dear Cattle Producers:

The Mississippi Beef Cattle Improvement Association is pleased to present the consignments for our fall bull and heifer sale. In addition to outstanding performance-backed bulls, we are excited to about this year's offering of bred commercial heifers and registered open heifers. Time and time again our cattle buyers cite the breed leading genetics, environmental adaptability, freight, and customer service advantages of purchasing cattle raised in Mississippi. Cattle in this sale offer these advantages and more.

The sale will be broadcast live from the Raymond sale site over the Extension distance education system. A link to the sale site will be available at [extension.msstate.edu/beef](http://extension.msstate.edu/beef).

The cattle will be available for viewing at the Hinds Community College Sales Facility in Raymond, MS starting on the afternoon of Wednesday, November 1. BCIA members, breeders, and Extension personnel will be glad to assist you in selecting breeding cattle that will work well for your operation. We look forward to seeing you at the sale on Thursday, November 2.

Sincerely,

Brandi B. Karisch

Extension Beef Cattle Specialist

## Consignors

- The Gaddis Farms
- GLB Farms
- MBK Cattle
- Mississippi State University Beef Unit
- Rockhill Ranch

MISSISSIPPI  
**BCIA**  
BEEF CATTLE IMPROVEMENT ASSOCIATION

Cooperative Extension Service · Mississippi State University  
Box 9815 · Mississippi State, MS 39762-9815 · Office (662) 325-3516 · Fax (662) 325-8873

Mississippi State University, United States Department of Agriculture, Counties Cooperating  
Mississippi State University does not discriminate on the basis of race, color, religion, national origin, sex, age, disability, or veteran status.

## Consignor Contact Information

---

### **GLB Farms (Gelbvieh & Brangus Bulls)**

Billy Sumrall  
(601) 669-0072  
Monticello, MS  
Jimmy Baldwin  
(601) 695-9317  
Monticello, MS

### **MBK Cattle (Simmental & SimAngus Bulls)**

Matt & Brandi Karisch  
Starkville, MS 39759  
Matt Karisch (979) 249-6172  
mbkcattle@gmail.com

### **The Gaddis Farms (Bred Heifers)**

Ben Washburn (601) 594-0239  
Ted Kendall IV (601) 940-2524  
Bolton, MS

### **Mississippi State University Beef Unit (Bred Heifers)**

Mississippi State, MS  
Alex Gardner (662) 418-5002  
Dr. Brandi Karisch (662) 325-7465

### **Rockhill Ranch (SimAngus Bred Heifers)**

Rickey Nicholas  
(601) 818-1456  
Purvis, MS 39475

## Terms, Conditions, and General Sale Information

---

**TERMS:** Terms of the sale are cash. Settlements are to be made with the clerk immediately after the conclusion of the auction. The Mississippi Beef Cattle Improvement Association acts as an agent only. The contract is between the buyer and seller.

**BIDDING & DISPUTES:** All cattle will be sold at public auction to the highest bidder. The auctioneer will settle any disputes concerning bids, and auctioneer decisions will be final. *Auctioneer: Jarvene Shackelford - American Livestock Brokers: H: (662) 837-4904 | Mobile: (662) 837-1776*

**HEALTH:** Health papers from licensed veterinarians accompany cattle to the sale. It is the responsibility of the buyer to know the health restrictions of his/her state and be aware of the possibility of any subsequent testing of animals purchased through this sale as required by law.

**REGISTRATION:** All bulls have been registered with their respective breed associations. Properly signed certificate of registry transfers will be furnished to the buyer.

**BREEDING GUARANTEE:** Animals are guaranteed to be without defects, but nothing more.

**Bulls:** All sale bulls will have documentation of a passed breeding soundness exam, including scrotal measurements within 30 days prior to sale. Scrotal circumference measurement minimums for sale bulls are 32 cm for 12–16 month old bulls, 34 cm for 17–23 month old bulls, and 36 cm for 24+ month old bulls. Bulls failing to breed after a trial of six months may be returned to the seller, if in good condition. The seller reserves the right to try said animal for six months, and if he proves to be a breeder, to return him to the buyer at the buyer's expense. If the bull proves to be a non-breeder, a satisfactory exchange will be made, or the purchase price refunded.

**Bred Heifers:** A pregnancy examination has been performed prior to the sale. Due dates reported in sale catalog are approximate based on a 283-day gestation. The consignor guarantees bred heifers to be safe in calf at the time of sale. If a heifer is proven by veterinary exam within 30 days after sale to be open, the consignor will replace the heifer or make a financial settlement with the buyer.

Settlement is between buyer and seller. In the event of an open heifer, the buyer must: 1) contact the consignor directly; 2) procure a signed statement of fact from a licensed veterinarian; 3) reach an agreement with the consignor as to the settlement procedure; and 4) contact sale management if a satisfactory settlement is not reached.

**Open Heifers:** "Open" females are guaranteed by the seller to be without calf.

**ANNOUNCEMENTS:** Announcements made from the auction block on sale day shall take precedence over information printed in the catalog. It is therefore the buyer's responsibility to pay attention to any such announcements.

**PROCESSING FOR SALE:** Cattle are to be delivered to the sale location by 12:00 noon on November 1, 2023 (the day preceding the sale). Cattle will be weighed, beginning at 1:00 p.m. that day and available for viewing afterwards.

**SALE ORDER:** Bulls will sell before heifers, and open heifers will sell before bred heifers. A committee of three will set the bull sale order based on individual performance data, EPDs, general conformation and quality. A selection index based on the individual bull's score in the following categories will be used to rank bulls for determination of sale order (highest scoring will sell first); CE or BW EPD (max of 5 points), WW EPD (max. of 7.5 points), YW EPD (max. of 7.5 points), scrotal circumference (max. of 5 points), weight per day of age (max. of 15 points), IMF EPD (max of 5 points), REA EPD (max of 5 points), and visual appraisal (max. of 40 points). Five points will be added to a bull's selection index total if ultrasound scan results are provided.

**CATTLE REMOVAL:** Cattle purchased will be cared for 24 hours after the conclusion of the sale without charge. Arrangements for removal from grounds must be made at the conclusion of the 24 hours.

**LIABILITY:** All persons who attend this sale do so at their own risk. The owners and sponsors assume no responsibility, legal or otherwise, for any accidents that may occur.

# Explanation of Performance Records

---

## Individual Bull Performance Records

<i>BW</i>	<i>Adj. WW</i>	<i>WW Ratio</i>	<i>Adj. YW</i>	<i>YW Ratio</i>	<i>Adj. IMF</i>	<i>IMF Ratio</i>	<i>Adj. REA</i>	<i>REA Ratio</i>
<b>1</b>	<b>2</b>	<b>3</b>	<b>4</b>	<b>5</b>	<b>6</b>	<b>7</b>	<b>8</b>	<b>9</b>

- 1. Birth Weight** – Actual birth weight.
- 2. Adjusted Weaning Weight** – Weaning weight adjusted to 205 days of age.
- 3. Adjusted Weaning Weight Ratio** – Bull’s weaning weight as compared to his contemporary group. Average = 100.
- 4. Adjusted Yearling Weight** – Yearling weight adjusted to 365 days of age.
- 5. Adjusted Yearling Weight Ratio** – Bull’s yearling weight as compared to his contemporary group. Average =100.
- 6. Adjusted Intramuscular Fat** – Percent intramuscular fat of the ribeye adjusted to 12 months of age.
- 7. Adjusted Intramuscular Fat Ratio** – Bull’s adjusted percent intramuscular fat as compared to his contemporary group. Average = 100.
- 8. Adjusted Ribeye Area** – Area of the ribeye in square inches adjusted to 12 months of age.
- 9. Adjusted Ribeye Area Ratio** – Bull’s adjusted ribeye area as compared to his contemporary group. Average = 100.

## Expected Progeny Differences

Expected progeny differences are a useful genetic selection tool. They provide predictions of the expected performance of the calves sired by a bull compared to the expected performance of calves sired by other bulls of the same breed. They are calculated as part of national cattle evaluation programs and are based on the performance records of an individual animal, its relatives, and its progeny. Most breed associations publish EPDs on individual animals in sire summaries and searchable Internet databases. Breed associations also publish tables that show where individual animals rank within the breed for specific traits.

Expected progeny differences can be used to make herd genetic improvement in both commercial and seedstock operations. They should be used in conjunction with other selection criteria in a balanced approach to select herd sires with acceptable combinations of economically relevant traits that will complement cow herds and match market targets. Genetic improvement can mean increased weaning weights and growth performance, enhanced reproductive performance and better performance on the rail, all of which can enhance the profitability of a cattle operation. Printed EPD values are accurate as of 11/1/2023.

## Accuracy Values (ACC)

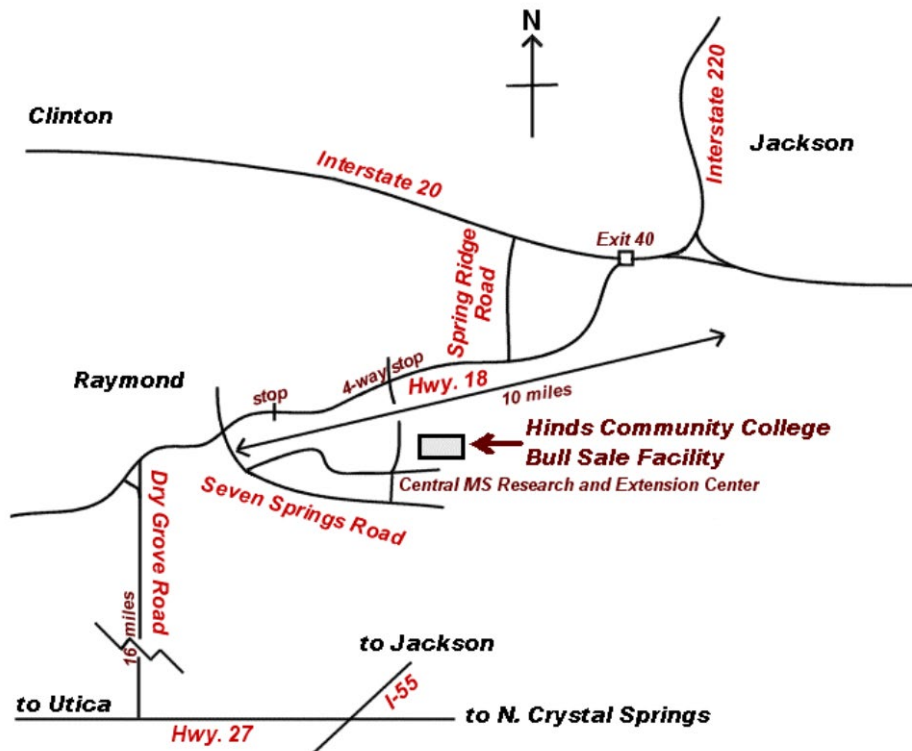
Expected progeny differences come with **accuracy values (ACC)** that give an indication of the reliability of the EPDs. Accuracy values help breeders determine the level of uncertainty or risk associated with selection decisions. They are reported as a decimal number between zero and one. Larger values indicate greater accuracy. Remember, EPDs can be directly compared regardless of accuracy. Accuracies simply reflect risk.

Expected change tables are published by breed associations as part of national cattle evaluations to show how much variation can be expected for EPDs at specific accuracy levels. As more usable performance information becomes available for an animal and its relatives and progeny, the more accurate or reliable its EPDs become. Thus, a young, unproven bull with no calves will have lower accuracy EPDs than a proven sire with hundreds of calf records.

## Fall 2023 EPD Percentile Rankings for Non-Parents

BREED	% RANKING	EPD							
		CE	Birth	Weaning	Yearling	Milk	Scrotal	Marb	REA
Brangus	TOP 25%	6.58	-0.05	30.89	56.08	10.60	0.80	0.18	0.35
	50%	4.94	0.57	23.11	44.38	8.24	0.56	0.07	0.20
	75%	3.23	1.36	16.13	33.75	5.90	0.33	-0.004	0.06
Gelbvieh	Top 25%	15	-1.50	77	118	25	0.90	0.39	0.78
	50%	13	-0.20	70	105	21	0.60	0.24	0.61
	75%	11	1.20	62	91	18	0.30	0.10	0.44
Simmental	Top 25%	12.90	0.20	84.70	128.20	26.40		0.27	0.98
	50%	11.10	1.50	78	116.20	23.30		0.14	0.87
	75%	9.30	2.60	72	105.40	20.40		0.04	0.76
Percentage Simmental	Top 25%	14.40	-1.20	83.50	130.20	25.60		0.48	0.81
	50%	12.30	0.30	76.10	117.40	22.90		0.32	0.66
	75%	10.40	1.60	69.40	105.40	20.20		0.19	0.52

## Map to Sale Location



Please join us in Raymond for the 2024 Hinds Bull Test and Spring BCIA Bull Sale on Thursday, March 7, 2024.



# GLB Farms



## GLB RAPID REWARD 10J

### BRANGUS

Calved: 12/5/21 Tattoo: 10J Reg. #: 10537417

TCF RAPID REWARD 145Z3  
 TCF RAPID REWARD 986D  
 TCF GLYNDA 986A  
 STONEWALL OF RRR222W6  
 GLB STONEWALL 52D  
 GLB BRAND 52U

## Lot 1

BW	Adj. WW	WW Ratio	Adj. YW	YW Ratio	Adj. IMF	IMF Ratio	Adj. REA	REA Ratio
<b>73</b>	<b>620</b>	<b>100</b>	<b>965</b>	<b>100</b>				

	CED	BW	WW	YW	MILK	TM	CEM	SC	REA	IMF	FAT
EPD	<b>5.7</b>	<b>-0.4</b>	<b>18</b>	<b>38</b>	<b>6</b>	<b>16</b>	<b>4.08</b>	<b>0.85</b>	<b>0.23</b>	<b>-0.01</b>	<b>0.005</b>
ACC	0.21	0.33	0.19	0.11	0.1		0.12	0.11	0.10	0.12	0.11

	HEIFER PREG	STAY	COW WT	TERM INDEX	FERT INDEX	BB	NC
EPD	<b>1.54</b>	<b>0.54</b>	<b>-7.9</b>	<b>1.64</b>	<b>2.35</b>	<b>-2.83</b>	<b>0.03</b>
ACC	0.06	0.04	0.04			0.06	0.04

# GLB Farms



## GLB MONUMENT 200J

### BRANGUS

Calved: 12/20/2021 Tattoo: 200J Reg. #:10506806

BWCC MONUMENT 10D7  
 BWCC MONUMENT 403G2  
 BWCCMS ELEGIDO 403Y  
 GLB REAL DEAL 329W6  
 GLB BRAND 707Z  
 GLB BRAND 707/515L

## Lot 2

BW	Adj. WW	WW Ratio	Adj. YW	YW Ratio	Adj. IMF	IMF Ratio	Adj. REA	REA Ratio
<b>71</b>	<b>605</b>	<b>100</b>	<b>940</b>	<b>100</b>				

	CED	BW	WW	YW	MILK	TM	CEM	SC	REA	IMF	FAT
EPD	<b>4.7</b>	<b>0.1</b>	<b>25</b>	<b>49</b>	<b>14</b>	<b>27</b>	<b>3.11</b>	<b>0.95</b>	<b>0.17</b>	<b>0.05</b>	<b>0.023</b>
ACC	0.16	0.32	0.15	0.12	0.10		0.12	0.10	0.09	0.11	0.10

	HEIFER PREG	STAY	COW WT	TERM INDEX	FERT INDEX	BB	NC
EPD	<b>5.9</b>	<b>2.1</b>	<b>6.63</b>	<b>2.23</b>	<b>3.18</b>	<b>0.05</b>	<b>0.1</b>
ACC	0.05	0.03	0.01				

# GLB Farms



## J/G GRANITE RIDGE RODEO 42K

BLACK IMPACT 3960N  
3G GRANITE RIDGE 9106G  
3G COWGIRL BARMAID 495B  
GLB BENNETT Y350  
J/G MS DELILAH 42H  
BRAND42A ET

### Lot 3

### GELBVIEWH

Calved: 3/6/2022 Tattoo: 42K Reg. #: 1546558

BW	Adj. WW	WW Ratio	Adj. YW	YW Ratio	Adj. IMF	IMF Ratio	Adj. REA	REA Ratio
<b>75</b>	<b>610</b>	<b>100</b>	<b>1165</b>	<b>100</b>				

	CE	BW	WW	YW	Milk	TM	CEM	HP	PG30
EPD	<b>14</b>	<b>-0.4</b>	<b>68</b>	<b>100</b>	<b>22</b>	<b>56</b>	<b>5</b>	<b>6.44</b>	<b>0.36</b>
ACC	0.18	0.21	0.18	0.17	0.11		0.13	0.01	0.01

	STAY	DOC	SC	YG	CW	CREA	MARB	CFAT	FPI
EPD	<b>14</b>	<b>12</b>	<b>0.38</b>	<b>-0.26</b>	<b>34</b>	<b>0.79</b>	<b>0.14</b>	<b>-0.04</b>	<b>74.36</b>
ACC	0.12	0.18	0.08	0.13	0.17	0.15	0.12	0.11	

# GLB Farms



## 139K

BLACK IMPACT 3960N  
3G GRANITE RIDGE 9106G  
3G COWGIRL BARMAID 495B  
RIGHT TIME

### Lot 4

### GELBVIEWH

Calved: 02/27/2022 Tattoo: 139K Reg. #: 1546559

139H  
139Y

BW	Adj. WW	WW Ratio	Adj. YW	YW Ratio	Adj. IMF	IMF Ratio	Adj. REA	REA Ratio
<b>72</b>	<b>550</b>	<b>100</b>	<b>1050</b>	<b>100</b>				

	CE	BW	WW	YW	Milk	TM	CEM	HP	PG30
EPD	<b>10</b>	<b>1.4</b>	<b>68</b>	<b>95</b>	<b>29</b>	<b>63</b>	<b>4</b>	<b>6.75</b>	<b>-1.96</b>
ACC	0.22	0.25	0.22	0.22	0.17		0.17	0.13	0.05

	STAY	DOC	SC	YG	CW	CREA	MARB	CFAT	FPI
EPD	<b>12</b>	<b>12</b>	<b>0.62</b>	<b>-0.35</b>	<b>23</b>	<b>0.79</b>	<b>-0.03</b>	<b>-0.06</b>	<b>67.51</b>
ACC	0.15	0.18	0.15	0.13	0.17	0.16	0.12	0.10	



# MBK Cattle



## MBK County O 22K

W/C LOADED UP 1119Y  
GEFF COUNTY O  
RUBY NFF RHYTHM 475B  
TRIPLE C INVASION R47K  
CIRCLE T CHRISTINA  
HPF MS CHRISTINA R014

### Lot 5

### SIMMENTAL

Calved: 03/01/2022 Tattoo: 22k Reg. #: 4066720

BW	Adj. WW	WW Ratio	Adj. YW	YW Ratio	Adj. IMF	IMF Ratio	Adj. REA	REA Ratio		
<b>82</b>	<b>563</b>	<b>97</b>	<b>844</b>	<b>100</b>						
	CE	BW	WW	YW	ADG	MCE	Milk	MWW	Stay	Doc
EPD	<b>6.7</b>	<b>3.6</b>	<b>70.3</b>	<b>103.7</b>	<b>0.21</b>	<b>1.0</b>	<b>20.5</b>	<b>55.6</b>	<b>18.1</b>	<b>6.3</b>
ACC	0.28	0.35	0.32	0.31	0.31	0.21	0.19	0.25	0.18	0.25
	CW	YG	Marb	BF	REA	Shr	API	TI		
EPD	<b>20.9</b>	<b>-0.50</b>	<b>0.06</b>	<b>-0.106</b>	<b>0.89</b>		<b>119.2</b>	<b>68.5</b>		
ACC	0.23	0.19	0.21	0.20	0.22					

# MBK Cattle



## MBK/PMCC ELMER T 11K

CDI INNOVATOR 325D  
WHF ELMER T F316  
WHF JOY 315C  
GOET I80  
MBK SOUTHERN BELLE 10B  
LJG B RIGHT PATH

### Lot 6

### PERCENTAGE SIMMENTAL

Calved: 9/15/2022 Tattoo: 11K Reg. #: 4182137

BW	Adj. WW	WW Ratio	Adj. YW	YW Ratio	Adj. IMF	IMF Ratio	Adj. REA	REA Ratio		
<b>70</b>	<b>554</b>	<b>103</b>	<b>1071</b>	<b>106</b>						
	CE	BW	WW	YW	ADG	MCE	Milk	MWW	Stay	Doc
EPD	<b>13.5</b>	<b>0.7</b>	<b>73.9</b>	<b>109.6</b>	<b>0.22</b>	<b>6.6</b>	<b>22.4</b>	<b>59.3</b>	<b>8.8</b>	<b>9.9</b>
ACC	0.21	0.30	0.27	0.24	0.24	0.15	0.14	0.19	0.13	0.15
	CW	YG	Marb	BF	REA	Shr	API	TI		
EPD	<b>29.2</b>	<b>-0.48</b>	<b>0.13</b>	<b>-0.088</b>	<b>1.06</b>	<b>-0.20</b>	<b>109.0</b>	<b>72.6</b>		
ACC	0.20	0.15	0.14	0.14	0.19	0.02				

# MBK Cattle



## MBK LOOKOUT 219K

O C C LEGEND 616L  
 B C LOOKOUT 7024  
 WHF JOY 315C  
 RC CLUB KING 040R  
 MISS CCF LOOKING X219  
 MISS CCF SHEZA LOOKER

### Lot 7

### SIMANGUS

Calved: 08/26/2022 Tattoo: 219K Reg. #: 4182135

BW	Adj. WW	WW Ratio	Adj. YW	YW Ratio	Adj. IMF	IMF Ratio	Adj. REA
<b>80</b>	<b>579</b>	<b>108</b>	<b>1009</b>	<b>100</b>			

	CE	BW	WW	YW	ADG	MCE	Milk	MWW	Stay	Doc
EPD	<b>9.7</b>	<b>2.4</b>	<b>79</b>	<b>115.9</b>	<b>0.23</b>	<b>1.2</b>	<b>15.8</b>	<b>55.3</b>	<b>15.7</b>	<b>11.2</b>
ACC	0.28	0.35	0.32	0.31	0.31	0.24	0.24	0.28	0.22	0.26

	CW	YG	Marb	BF	REA	Shr	API	TI
EPD	<b>27.0</b>	<b>-0.16</b>	<b>0.17</b>	<b>-0.036</b>	<b>0.44</b>		<b>116.7</b>	<b>71.6</b>
ACC	0.27	0.15	0.25	0.24	0.27			

# MBK Cattle



## MBK/PMCC ELMER T 53K

CDI INNOVATOR 325D  
 WHF ELMER T F316  
 WHF JOY 315C  
 MR HOC BROKER  
 MISS JRW AMAZING A053  
 WS BACALL S29

### Lot 8

### SIMMENTAL

Calved: 09/19/2022 Tattoo: 53K Reg. #: 4182132

BW	Adj. WW	WW Ratio	Adj. YW	YW Ratio	Adj. IMF	IMF Ratio	Adj. REA
<b>80</b>	<b>599</b>	<b>111</b>	<b>1057</b>	<b>105</b>			

	CE	BW	WW	YW	ADG	MCE	Milk	MWW	Stay	Doc
EPD	<b>8.6</b>	<b>4.3</b>	<b>87.0</b>	<b>128.9</b>	<b>0.26</b>	<b>4.7</b>	<b>23.4</b>	<b>66.9</b>	<b>14.4</b>	<b>6.7</b>
ACC	0.25	0.33	0.29	0.28	0.28	0.20	0.20	0.23	0.14	0.16

	CW	YG	Marb	BF	REA	Shr	API	TI
EPD	<b>35.8</b>	<b>-0.46</b>	<b>-0.01</b>	<b>-0.085</b>	<b>1.10</b>	<b>-0.34</b>	<b>116.0</b>	<b>76.6</b>
ACC	0.23	0.15	0.16	0.38	0.22	0.05		

# Rockhill Ranch



## Lot 9

### ROCKHILL MS COMFORT JR92

Breed: BRED SIMANGUS HEIFER  
 Calved: 12/25/2021  
 Tattoo: JR92  
 Reg. # : 4053878

TJ MARLBORO MAN 360A  
 ROCKHILL MARLBORO D460  
 GW MISS HI BET 289Z  
 REDHILL 225Z 60Z 150B  
 ROCKHILL MS COMFORT FR25  
 JC MS COMFORT 486B

BW	Adj. WW	WW Ratio	Adj. YW	YW Ratio	Adj. IMF	IMF Ratio	Adj. REA	REA Ratio		
<b>74</b>	<b>552</b>		<b>745</b>							
CE	BW	WW	YW	ADG	MCE	Milk	MWW	Stay	Doc	
<b>EPD 13.4</b>	<b>-1.6</b>	<b>73.8</b>	<b>106.1</b>	<b>0.20</b>	<b>6.8</b>	<b>33.3</b>	<b>70.1</b>	<b>15.3</b>	<b>11.8</b>	
ACC 0.40	0.44	0.41	0.42	0.42	0.13	0.13	0.22	0.29	0.38	
CW	YG	Marb	BF	REA	Shr	API	TI			
<b>EPD 35.7</b>	<b>-0.25</b>	<b>0.35</b>	<b>-0.037</b>	<b>0.82</b>	<b>-0.49</b>	<b>136.1</b>	<b>80.5</b>			
ACC 0.37	0.30	0.33	0.31	0.35	0.05					

# Rockhill Ranch



## Lot 10

### ROCKHILL MARLBORO KR93

Breed: BRED SIMANGUS HEIFER  
 Calved: 1/7/2022  
 Tattoo: KR93  
 Reg. # : 4053903

TJ MARLBORO MAN 360A  
 ROCKHILL MARLBORO D460  
 GW MISS HI BET 289Z  
 HOOK'S YUKON 80Y  
 GW MISS YUKON 502B  
 GW MISS NEBULA 530T

BW	Adj. WW	WW Ratio	Adj. YW	YW Ratio	Adj. IMF	IMF Ratio	Adj. REA	REA Ratio		
<b>71</b>	<b>526</b>	<b>100</b>	<b>724</b>	<b>102</b>						
CE	BW	WW	YW	ADG	MCE	Milk	MWW	Stay	Doc	
<b>EPD 14.0</b>	<b>0.7</b>	<b>73.4</b>	<b>115.8</b>	<b>0.27</b>	<b>7.9</b>	<b>30.8</b>	<b>67.4</b>	<b>15.1</b>	<b>2.4</b>	
ACC 0.40	0.45	0.42	0.42	0.42	0.20	0.14	0.23	0.30	0.38	
CW	YG	Marb	BF	REA	Shr	API	TI			
<b>EPD 27.2</b>	<b>-0.37</b>	<b>0.39</b>	<b>-0.062</b>	<b>0.91</b>	<b>-0.30</b>	<b>137.0</b>	<b>79.6</b>			
ACC 0.38	0.30	0.33	0.32	0.36	0.05					

#### Service Sire of Lots 9 and 10:

Pasture exposed to ASA # 4113242 from 4/24/23 to 8/3/23  
 BIG COUNTRY K2976  
 5/8 SM 5/16 AN 1/16 AR

Registered black SimAngus heifers bred to calve to Red SimAngus bull who was lead off bull in the 2023 Big Country Genetics bull sale

# MSU Beef Unit



**Service Sires of Lots 11 to 35:**

MSU Rolex J126 (Angus Registration number 20332529)

**Natural Service Dates:** 5/15/23 to 7/14/23

**Pregnancy Check Date:** 9/6/23

ID	Birth Date	Sire Breed	Dam Breed
K001	1/25/22	SIMMENTAL	SIMBRAH X COMMERCIAL
K003	1/28/22	SIMMENTAL	SIMANGUS HT
K008	2/2/22	SIMMENTAL	COMMERCIAL BRANGUS
K011	2/2/22	SIMMENTAL	SIMANGUS HT
K013	2/2/22	SIMMENTAL	SIMANGUS HT
K014	2/2/22	SIMANGUS	COMMERCIAL BRANGUS
K022	2/4/22	SIMMENTAL	COMMERCIAL BRANGUS
K044	2/20/22	ANGUS	SIMANGUS HT
K049	2/22/22	ANGUS	SIMBRAH X COMMERCIAL
K054	2/23/22	HEREFORD	COMMERCIAL BRANGUS
K058	2/23/22	ANGUS	SIMANGUS HT
K061	2/23/22	SIMBRAH	COMMERCIAL ANGUS
K063	2/28/22	HEREFORD	COMMERCIAL BRANGUS
K065	2/28/22	HEREFORD	COMMERCIAL BRANGUS
K067	2/28/22	HEREFORD	COMMERCIAL BRANGUS
K073	3/1/22	HEREFORD	COMMERCIAL BRANGUS
K076	3/2/22	SIMBRAH	COMMERCIAL ANGUS
K079	3/2/22	HEREFORD	COMMERCIAL BRANGUS
K089	3/7/22	HEREFORD	COMMERCIAL BRANGUS
K092	3/13/22	HEREFORD	COMMERCIAL BRANGUS
K097	3/21/22	HEREFORD	COMMERCIAL BRANGUS
K098	3/23/22	HEREFORD	COMMERCIAL BRANGUS
K100	3/31/22	HEREFORD	COMMERCIAL BRANGUS
K101	3/31/22	SIMBRAH	COMMERCIAL ANGUS
K109	4/6/22	HEREFORD	COMMERCIAL BRANGUS

MSU Beef Unit  
 Starkville, MS  
 662-418-5002 Alex Gardner  
 662-325-7465 Brandi Karisch

# The Gaddis Farms



## **Service Sires of Lots 36 to 71:**

TAF Home Town 5161 (Angus Registration number 20493332)

KEA Extra Point E306 1570 (Angus Registration number 20266011)

KEA Big Boy E302 1390 (Angus Registration number 20254625)

**Natural Service Dates:** 3/15/23 to 10/10/23

**Pregnancy Check Date:** 10/10/23

These heifers are a set that were purchased as calves from surrounding farmers in the fall of 2022. They are bred to low birth weight Angus bulls from the Thames Farms Sale.

Mostly black with white faces with no more than 3/8 Brahman influence and 2 with Charolais influence.

1 heifer checked 3 months, 3 checked 4 months, 2 checked 4 1/2 months, 15 checked 5 months, 14 checked 6 months, and 1 checked 7 months by Dr. Pat Larkin. Will be sorted into lots based on gestation and breed type.

The Gaddis Farms

Bolton, MS

601-594-0239 Ben Washburn

601-940-2524 Ted Kendall IV