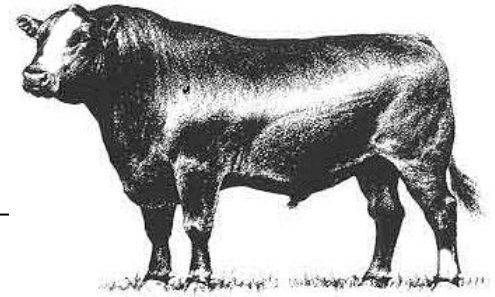


Hinds Community College Bull Test
Mississippi Beef Cattle Improvement Association
2019 Spring Bull Sale

Thursday, March 7, 2019 • 12:00 Noon
Hinds Community College
1310 Seven Springs Road, Raymond, MS



**MISSISSIPPI STATE UNIVERSITY™
EXTENSION**

Dear Cattle Producers:

The Hinds Community College Bull Test and Mississippi Beef Cattle Improvement Association cattle marketing partnership is a proven source for breeding cattle that build profits. In today's cattle market, the payoffs from using quality herd sires make acquiring high quality genetics a must for producers.

We recognize that quality bulls are essential to producing profitable calf crops. Time and time again our bull buyers cite the breed leading genetics, environmental adaptability, freight, and customer service advantages of purchasing bulls raised in Mississippi. All bulls in our spring sale are screened for structure, disposition, and performance and are guaranteed as breeders. These bulls have passed breeding soundness examinations, met minimum growth and scrotal circumference requirements, and represent quality genetics.

As an added attraction, the Mississippi BCIA will host its annual membership meeting at the sale site starting at 6:00 p.m. on Wednesday, March 6, 2019. Attendees will also have an opportunity to view the sale cattle. The supper and program are open to the public. Please RSVP to Mari Quinn at 662-325-3516 or m.quinn@msstate.edu if you plan to attend the Wednesday evening activities.

The sale will be broadcast live from the Raymond sale site over the Extension distance education system. A link to the sale site will be available at extension.msstate.edu/beef.

The cattle will be available for viewing at the Hinds Community College Sale Facility in Raymond, MS starting on the afternoon of March 6. BCIA members, breeders, and Extension personnel will be glad to assist you in selecting breeding cattle that will work well for your operation. We look forward to seeing you at the sale on March 1.

Sincerely,

Kenny Banes

Hinds Bull Test Manager

Brandi B. Karisch

Extension Beef Cattle Specialist

Consignors

- Arrow B Farm
- Blossom Hill Farm
- Fitch Brothers Charolais
- Fulper Angus Farm
- Monogram Farms
- Moran Beefmasters
- Highland Angus
- G & R Farms
- R & K Cattle
- Thames Angus Farm
- Vista Farms Cattle Co. LLC
- Windy Hills Beefmasters



MISSISSIPPI
BCIA
BEEF CATTLE IMPROVEMENT ASSOCIATION

Cooperative Extension Service · Mississippi State University
Box 9815 · Mississippi State, MS 39762-9815 · Office (662) 325-3516 · Fax (662) 325-8873

Mississippi State University, United States Department of Agriculture, Counties Cooperating
Mississippi State University does not discriminate on the basis of race, color, religion, national origin, sex, age, disability, or veteran status.

Consignor Contact Information

Arrow B Farm (Angus)

Lance Ball
1725 Green Gable Road
Terry, MS 39170
601-955-1907
Lance.ball@hbc.com

Blossom Hill Farm (SimAngus)

Sammy Blossom
2147 Joe Hall Road
Flora, MS 39071
(601) 941-1276

Fitch Brothers Charolais (Charolais)

Coy & Jerome Fitch
113 St. Germain Street
Jeanerette, LA 70544
(337) 376-5991, (337) 579-3422

Fulper Angus Farm (Angus)

Chris Fulper
P.O. Box 621
Booneville, MS 38829
(662) 164-4424, (662) 728-4934

Monogram Farms (Angus)

Roland Preuss
1614 Ford Road
Terry, MS 39170
(601) 878-5896

Moran Beefmasters (Beefmaster)

Fred & Mary Moran
1528 Hwy 10
Greensburg, LA 70441
(225) 921-7449 | (225) 222-6565

Highland Angus (Angus)

H.B. Nickell
P.O. Box 824
Moscow, TN 38057
(901) 490-8087

G & R Farms (Angus)

Gary & Robbie Powell
400 Franks Road
Mantachie, MS 38855
(662) 640-1957

R & K Cattle

Mike Keene
1090 Churchwell Rd
Hattiesburg, MS 39401
(601) 606-7382

Thames Angus Farm (Angus)

Tony Thames
187 Carmel New Hope Road
Jayess, MS 39461
(601) 756 – 1357, (601) 587 – 7230

Vista Farms Cattle Co. LLC. (Angus)

Scott McElfresh
3514 County Rd 23
Fayette, AL 35555
(912) 257-5707
scottm@vistafarms.org

Windy Hills Beefmasters (Beefmaster)

Joan Berenson, Owner
Deon Inman, Manager
1481 Hwy 26 West
Poplarville, MS 39470
(601) 347-1592

Terms, Conditions, and General Sale Information

TERMS: Terms of the sale are cash. Settlements are to be made with the clerk immediately after the conclusion of the auction. The Mississippi Beef Cattle Improvement Association acts as an agent only. The contract is between the buyer and seller.

BIDDING & DISPUTES: All cattle will be sold at public auction to the highest bidder. The auctioneer will settle any disputes concerning bids, and auctioneer decisions will be final. *Auctioneer: Jarvene Shackelford - American Livestock Brokers:*
H: (662) 837-4904 | Mobile: (662) 837-1776

HEALTH: Health papers from licensed veterinarians accompany cattle to the sale. It is the responsibility of the buyer to know the health restrictions of his/her state and be aware of the possibility of any subsequent testing of animals purchased through this sale as required by law.

REGISTRATION: All bulls have been registered with their respective breed associations. Properly signed certificate of registry transfers will be furnished to the buyer.

BREEDING GUARANTEE: Animals are guaranteed to be without defects, but nothing more.

Bulls: All sale bulls will have documentation of a passed breeding soundness exam, including scrotal measurements within 30 days prior to sale. Scrotal circumference measurement minimums for sale bulls are 32 cm for 12–16 month old bulls, 34 cm for 17–23 month old bulls, and 36 cm for 24+ month old bulls. Bulls failing to breed after a trial of six months may be returned to the seller, if in good condition. The seller reserves the right to try said animal for six months, and if he proves to be a breeder, to return him to the buyer at the buyer's expense. If the bull proves to be a non-breeder, a satisfactory exchange will be made or purchase price refunded.

ANNOUNCEMENTS: Announcements made from the auction block on sale day shall take precedence over information printed in the catalog. It is therefore the buyer's responsibility to pay attention to any such announcements.

PROCESSING FOR SALE: Cattle are to be delivered to the sale location by 12:00 noon on March 6, 2019 (the day preceding the sale). Cattle will be weighed, beginning at 1:00 p.m. that day and available for viewing afterwards.

SALE ORDER: Hinds Bull Test Bulls will sell first based on an index (2 x WDA + 1 x ADG)/3. The MBCIA bulls will sell based on individual performance data, EPDs, general conformation and quality. A selection index based on the individual bull's score in the following categories will be used to rank bulls for determination of sale order (highest scoring will sell first); CE or BW EPD (max of 5 points), WW EPD (max. of 7.5 points), YW EPD (max. of 7.5 points), scrotal circumference (max. of 5 points), weight per day of age (max. of 15 points), IMF EPD (max of 5 points), REA EPD (max of 5 points), and visual appraisal (max. of 40 points). Five points will be added to a bull's selection index total if ultrasound scan results are provided.

CATTLE REMOVAL: Cattle purchased will be cared for 24 hours after the conclusion of the sale without charge. Arrangements for removal from grounds must be made at the conclusion of the 24 hours.

LIABILITY: All persons who attend this sale do so at their own risk. The owners and sponsors assume no responsibility, legal or otherwise, for any accidents that may occur.

Explanation of Performance Records

Individual Bull Performance Records

Hinds Test Bulls

<i>BW</i>	<i>Adj. WW</i>	<i>Adj. YW</i>	<i>YW Ratio</i>	<i>Test WDA</i>	<i>WDA Ratio</i>	<i>Test ADG</i>	<i>ADG Ratio</i>
1	2	4	5	6	7	8	9

Mississippi BCIA Bulls

<i>BW</i>	<i>Adj. WW</i>	<i>WW Ratio</i>	<i>Adj. YW</i>	<i>YW Ratio</i>	<i>Adj. IMF</i>	<i>IMF Ratio</i>	<i>Adj. REA</i>	<i>REA Ratio</i>
1	2	3	4	5	10	11	12	13

- 1. Birth Weight** – Actual birth weight.
- 2. Adjusted Weaning Weight** – Weaning weight adjusted to 205 days of age.
- 3. Adjusted Weaning Weight Ratio** – Bull's weaning weight as compared to his contemporary group. Average = 100.
- 4. Adjusted Yearling Weight** – Yearling weight adjusted to 365 days of age.
- 5. Adjusted Yearling Weight Ratio** – Bull's yearling weight as compared to his contemporary group. Average =100.
- 6. Bull Test Weight Per Day of Age** – Final bull test weight divided by bull age in days.
- 7. Bull Test Weight Per Day of Age Ratio** – Bull's weight per day of age at bull test end as compared to his contemporary group. Average =100.
- 8. Bull Test Average Daily Gain** – Average daily gain in pounds per day over the 112-day bull test period.
- 9. Bull Test Average Daily Gain Ratio** – Bull's test average daily gain as compared to his contemporary group. Average =100.
- 10. Adjusted Intramuscular Fat** – Percent intramuscular fat of the ribeye adjusted to 12 months of age.
- 11. Adjusted Intramuscular Fat Ratio** – Bull's adjusted percent intramuscular fat as compared to his contemporary group. Average = 100.
- 12. Adjusted Ribeye Area** – Area of the ribeye in square inches adjusted to 12 months of age.
- 13. Adjusted Ribeye Area Ratio** – Bull's adjusted ribeye area as compared to his contemporary group. Average = 100.



Mississippi BCIA Bull Designations

Bulls meeting certain expected progeny difference (EPD) requirements are noted with one or more of the following designations:

- **Balanced Trait:** should provide moderation for calving ease, growth, and milking ability
- **Terminal:** should produce calves with exceptional growth performance
- **Calving Ease:** should reduce the risk of calving difficulty in females to which a bull is bred
- **Carcass Merit:** should produce calves with good post-weaning growth, ribeye area, and marbling

Expected Progeny Differences

Expected progeny differences are a useful genetic selection tool. They provide predictions of the expected performance of the calves sired by a bull compared to the expected performance of calves sired by other bulls of the same breed. They are calculated as part of national cattle evaluation programs and are based on the performance records of an individual animal, its relatives, and its progeny. Most breed associations publish EPDs on individual animals in sire summaries and searchable Internet databases. Breed associations also publish tables that show where individual animals rank within the breed for specific traits.

Expected progeny differences can be used to make herd genetic improvement in both commercial and seedstock operations. They should be used in conjunction with other selection criteria in a balanced approach to select herd sires with acceptable combinations of economically relevant traits that will complement cow herds and match market targets. Genetic improvement can mean increased weaning weights and growth performance, enhanced reproductive performance and better performance on the rail, all of which can enhance the profitability of a cattle operation. **Printed EPD values are accurate as of 2/15/2019.**

Accuracy Values (ACC)

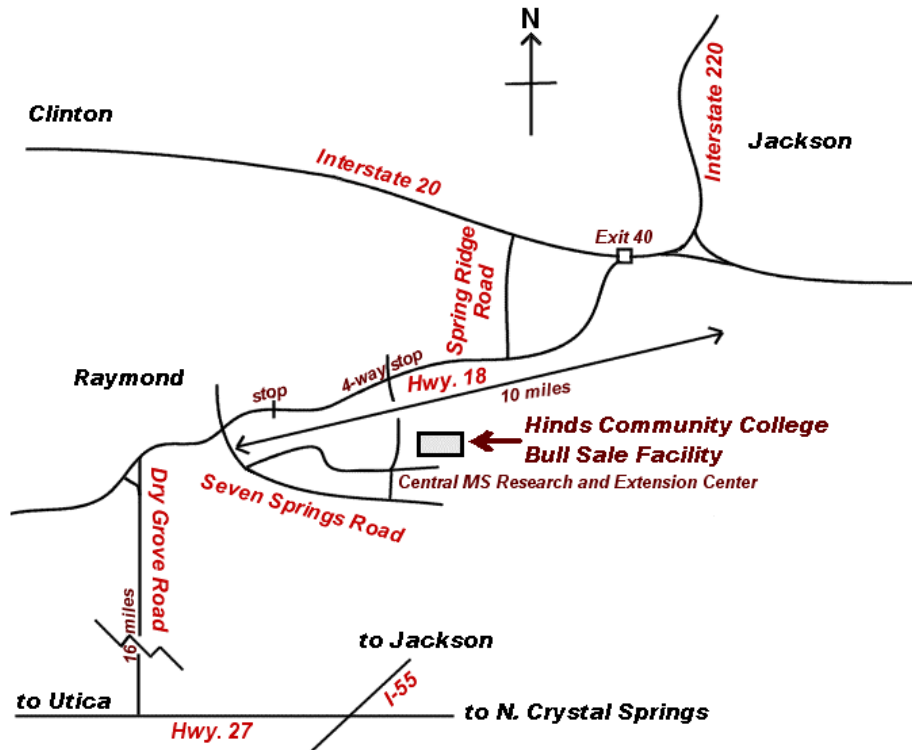
Expected progeny differences come with **accuracy values (ACC)** that give an indication of the reliability of the EPDs. Accuracy values help breeders determine the level of uncertainty or risk associated with selection decisions. They are reported as a decimal number between zero and one. Larger values indicate greater accuracy. Remember, EPDs can be directly compared within a breed regardless of accuracy. Accuracies simply reflect risk.

Expected change tables are published by breed associations as part of national cattle evaluations to show how much variation can be expected for EPDs at specific accuracy levels. As more usable performance information becomes available for an animal and its relatives and progeny, the more accurate or reliable its EPDs become. Thus, a young, unproven bull with no calves will have lower accuracy EPDs than a proven sire with hundreds of calf records.

Spring 2019 EPD Percentile Rankings for Non-Parents

BREED	% RANKING	EPD							
		CE	Birth	Weaning	Yearling	Milk	Scrotal	Marb	REA
Angus	TOP 25%	10	0.2	60	106	11	1.13	0.72	0.68
	50%	7	1.4	52	93	24	0.74	0.51	0.51
	75%	3	2.5	45	79	21	0.35	0.33	0.35
Charolais	TOP 25%	7.9	-0.9	35.9	65.5		1.1	0.16	0.78
	50%	5.3	0.5	30.1	55.3		0.9	0.11	0.67
	75%	2.2	1.7	24.3	45.2		0.6	0.05	0.57
Beefmaster	TOP 25%	3.75	-0.23	28.26	49.26	10.95	0.53	0.08	0.37
	50%	2.51	0.69	21.97	40.34	9.37	0.27	-0.02	0.16
	75%	1.52	1.42	16.45	32.49	7.88	0.06	-0.10	-0.07
SimAngus	TOP 25%	13.7	-0.5	71.1	109.6	24.6		0.42	0.75
	50%	11.7	0.60	64.50	98.5	21.7		0.28	0.62
	75%	9.7	1.6	57.9	86.3	19.0		0.15	0.49

Map to Sale Location



Hinds Bulls Test Schedule

HCC Bull Test 2018-2019 Schedule

October 16, 2018	Test Began
November 13, 2018	First Period
December 11, 2018	Second Period
January 9, 2019	Third Period
February 5, 2019	Fourth Period (End of Test)
March 7, 2019	Sale

Contact Numbers for HCC Bull Test Station:

Kenny Banes, Farm Manager: (601) 260-7850 - cell

Lisa Whatley, Office Manager: (601) 857-3351 - office

Email: lwhatley@hindsc.edu

Monogram Farms



Monogram 62 Resource 1047

1

ANGUS

Hinds
Bull Test

Calved: 10/15/2017 Tattoo:1047 Reg. #: 19182390

S A V Resource 1441
Monogram Resource 625
Monogram Queen 2649
HARB Pendleton 765 J H
Monogram Evergreen 2401
Monogram Evergreen 4443

BW	Adj. WW	WW Ratio	Adj. YW	YW Ratio	Test WDA	WDA Ratio	Test ADG	ADG Ratio						
74	655		1239		3.35	113	4.95	116						
	CED	BW	WW	YW	RADG	YH	SC	Doc	HP	CEM	Milk	MW	MH	\$EN
EPD	2	2.8	60	101						6	28			-19.03
ACC	0.17	0.35	0.29	0.17						0.11	0.13			
	CW	Marb	RE	Fat	\$W	\$F	\$G	\$QG	\$YG	\$B				
EPD					52.74	59.06								
ACC														

Blossom Hill Farm



Mr BH CK 45E

2

SIMANGUS (5/8 SM, 3/8 AN)

Hinds
Bull Test

Calved: 10/31/2017 Tattoo: 45E Reg. #: 3461077

SSF Blk Predestined U221
Mr TJE SSF U221X
Miss Ruth 60
GW Lucky Dice 187H
Miss CK Ms 1/2 Sim 425W
Irvington 265 3572 4225

BW	Adj. WW	WW Ratio	Adj. YW	YW Ratio	Test WDA	WDA Ratio	Test ADG	ADG Ratio			
70	790		1279		3.46	100	4.59	100			
	CE	BW	WW	YW	ADG	MCE	Milk	Stay	DOC	YG	Shr
EPD	11.9	0.1	59.1	94.2	0.22	7.5	24.6	15.1	11.9	-0.19	-0.43
ACC	0.18	0.22	0.20	0.20	0.20	0.13	0.18	0.08	0.18	0.22	0.02
	CW	Marb	REA	BF	API	TI					
EPD	31.6	0.62	0.62	-0.033	142.1	74.7					
ACC	0.26	0.24	0.26	0.22							

Monogram Farms



Monogram 936 Consensus 1107

3

ANGUS

Hinds
Bull Test

Calved: 12/4/2017 Tattoo: 1107 Reg. #:19182394

Connealy Consensus 7229
Monogram Consensus 9363
Monogram Queen 862R
Monogram Net Worth 2819
Monogram Queen 351
Monogram Queen 5847

BW	Adj. WW	WW Ratio	Adj. YW	YW Ratio	Test WDA	WDA Ratio	Test ADG	ADG Ratio						
82	696		1210		3.28	109	4.68	117						
	CED	BW	WW	YW	RADG	YH	SC	Doc	HP	CEM	Milk	MW	MH	\$EN
EPD	-8	6.5	66	116						0	26			-23.25
ACC	0.17	0.35	0.29	0.19						0.10	0.13			
	CW	Marb	RE	Fat	\$W	\$F	\$G	\$QG	\$YG	\$B				
EPD	I+46	I+0.57	I+0.39	I+0.018	39.60	83.10	34.85	33.47	1.38	145.31				
ACC	0.05	0.05	0.05	0.05										

Monogram Farms



7

Monogram 77 Heritage 1807

ANGUS

Hinds
Bull Test

Calved: 11/25/2017 Tattoo: 1807 Reg. #:19182580

S A V Heritage 6295
Monogram Heritage 775
Monogram Rose 2240
Monogram Brand Name 463
Monogram Queen 1215
Monogram Queen 2102

BW	Adj. WW	WW Ratio	Adj. YW	YW Ratio	Test WDA	WDA Ratio	Test ADG	ADG Ratio						
70	612		1150		3.01	100	4.73	118						
	CED	BW	WW	YW	RADG	YH	SC	Doc	HP	CEM	Milk	MW	MH	\$EN
EPD	3	3	43	77						8	22			-0.05
ACC	0.21	0.33	0.27	0.16						0.09	0.10			
	CW	Marb	RE	Fat	\$W	\$F	\$G	\$QG	\$YG	\$B				
EPD					30.95	27.35								
ACC														

Monogram Farms



8

Monogram 283 BN 1538

ANGUS

Hinds
Bull Test

Calved: 2/13/2018 Tattoo: 1538 Reg. #:19182558

Monogram Brand Name 463
Monogram 46 BN 2835
Monogram Duchess 5205
S A V Heritage 6295
Monogram Elba 794
Monogram Elba 2290

BW	Adj. WW	WW Ratio	Adj. YW	YW Ratio	Test WDA	WDA Ratio	Test ADG	ADG Ratio						
78	762		1184		3.19	106	3.83	96						
	CED	BW	WW	YW	RADG	YH	SC	Doc	HP	CEM	Milk	MW	MH	\$EN
EPD	-9	6.7	70	123						2	26			-26.57
ACC	0.15	0.31	0.25	0.16						0.09	0.10			
	CW	Marb	RE	Fat	\$W	\$F	\$G	\$QG	\$YG	\$B				
EPD					41.56	93.69								
ACC														

Fitch Brothers Charolais



9

FBC ALLSTATE N237P

CHAROLAIS

Hinds
Bull Test

Calved: 11/23/2017 Tattoo: N237 Reg. #:M911320

KEYS SPECIALIST 18U
KEYS ALL STATE 149X
MISS KEY MEG 2T
VCR MR DAKOTA STYLE 55 P
FBC SIR STYLE 1125P
FBC MISS PRIME CUT 1289 P

BW	Adj. WW	WW Ratio	Adj. YW	YW Ratio	Test WDA	WDA Ratio	Test ADG	ADG Ratio
82					2.70	96	4.50	111
	CE	BW	WW	YW	Milk	MCE		
EPD	-5.4	2.5	34	58	-2	3.1		
ACC	PE	PE	PE	PE	PE	PE		
	TSI	SC	CWT	REA	FAT	MARB		
EPD	199.69	1.2	20	0.84	0.006	0.07		
ACC		PE	PE	PE	PE	PE		

Fitch Brothers Charolais



FBC PEPPER 1198

13

CHAROLAIS

Hinds
Bull Test

Calved: 1/19/2018 Tattoo: 1198 Reg. #:M911290

LHD CIGAR E46
FBC TABASCO 9165P ET
JDJ MS DYNASTY L428
WCR SIR DESIGN 7017 P
FBC MISS DESIGN 2123
FBC MISS BLANCO 1145 P

BW	Adj. WW	WW Ratio	Adj. YW	YW Ratio	Test WDA	WDA Ratio	Test ADG	ADG Ratio
78					2.30	81	3.69	91
	CE	BW	WW	YW	Milk	MCE		
EPD	3.0	1.0	27	49	8	5.5		
ACC	0.20	0.34	PE	PE	PE	PE		
	TSI	SC	CWT	REA	FAT	MARB		
EPD	192.55	0.9	17	0.70	0.003	0.00		
ACC		PE	PE	PE	PE	PE		

Moran Beefmasters



C1100191

14

Beefmaster

Hinds
Bull Test

Calved: 12/3/2017 Tattoo: 78 Reg. #: C1100191

Infinity
Red Sugar Bear
Oasis
Brutus
C1026964
C928687

BW	Adj. WW	WW Ratio	Adj. YW	YW Ratio	Test WDA	WDA Ratio	Test ADG	ADG Ratio
85	658	100	1036	103	2.76	103	2.97	92
	CE	BW	WW	YW	Milk	MCE		
EPD	2.1	0.9	25.9	48.7	7.2	2.9		
ACC	0.13	I	I	I	0.16	0.03		
	SC	REA	FAT	MARB	\$T	\$M		
EPD	0.3	-0.37	-0.033	-0.17	82.66	11.17		
ACC	0.18	0.22	0.20	0.22				

Moran Beefmasters



C1100192

15

Beefmaster

Hinds
Bull Test

Calved: 12/7/2017 Tattoo: 118 Reg. #: C1100192

CF Sugar Britches
Tiger Britches
Tiger Vanna
CF Dr. Love
C1043790
Oasis

BW	Adj. WW	WW Ratio	Adj. YW	YW Ratio	Test WDA	WDA Ratio	Test ADG	ADG Ratio
80	616	94	961	95	2.55	103	3.42	106
	CE	BW	WW	YW	Milk	MCE		
EPD	2.2	1.1	23	40.5	6	2.7		
ACC	0.14	I	I	I	0.15	0.04		
	SC	REA	FAT	MARB	\$T	\$M		
EPD	0.3	-0.18	-0.037	-0.20	68.36	11.05		
ACC	0.24	0.25	0.23	0.24				

Fitch Brothers Charolais



FBC BURNER D277P

16

CHAROLAIS

Hinds
Bull Test

Calved: 12/27/2017 Tattoo: D277 Reg. #:M911281

LHD CIGAR E46
FBC CAJUN SMOKE 1034
JD MS COMMANDER B309
TR MRTRADITION0665787RET
WCR MS TRADITION 8208 P
WCR MS PAUL 4080 P/S

BW	Adj. WW	WW Ratio	Adj. YW	YW Ratio	Test WDA	WDA Ratio	Test ADG	ADG Ratio
92					2.67	94	3.47	86
	CE	BW	WW	YW	Milk	MCE		
EPD	-0.3	1.8	26	42	5	2.4		
ACC	0.19	0.30	PE	PE	PE	PE		
	TSI	SC	CWT	REA	FAT	MARB		
EPD	183.73	0.7	11	0.77	-0.018	-0.06		
ACC		PE	PE	PE	PE	PE		

Monogram Farms



Monogram 62 Resource 1648

17

ANGUS

Hinds
Bull Test

Calved: 1/24/2018 Tattoo: 1648 Reg. #:19182568

S A V Resource 1441
Monogram Resource 625
Monogram Queen 2649
Buford BlueStem 9974
Monogram Duchess 2834
Monogram Duchess 5205

BW	Adj. WW	WW Ratio	Adj. YW	YW Ratio	Test WDA	WDA Ratio	Test ADG	ADG Ratio						
70	733		990		2.65	88	3.06	77						
	CED	BW	WW	YW	RADG	YH	SC	Doc	HP	CEM	Milk	MW	MH	\$EN
EPD	0	3.2	67	109						3	27			-21.35
ACC	0.16	0.32	0.27	0.16						0.11	0.12			
	CW	Marb	RE	Fat	\$W	\$F	\$G	\$QG	\$YG	\$B				
EPD					57.46	68.99								
ACC														

Fitch Brothers Charolais



FBC BURNER D257P

18

CHAROLAIS

Hinds
Bull Test

Calved: 12/25/2017 Tattoo: D257 Reg. #:M911283

LHD CIGAR E46
FBC CAJUN SMOKE 1034
JD MS COMMANDER B309
WCR SIR PRIMECUT 3020ETP
FBC MISS PRIME CUT 2038 P
WCR MS PRIME CUT 0123P

BW	Adj. WW	WW Ratio	Adj. YW	YW Ratio	Test WDA	WDA Ratio	Test ADG	ADG Ratio
90			901		2.47	87	3.06	76
	CE	BW	WW	YW	Milk	MCE		
EPD	3.4	0.9	29	52	7	3.2		
ACC	0.19	0.30	PE	PE	PE	PE		
	TSI	SC	CWT	REA	FAT	MARB		
EPD	193.16	0.9	18	0.66	-0.004	-0.05		
ACC		PE	PE	PE	PE	PE		

G & R Farms



G 205 Boxed Beef



ANGUS

Calved: 1/25/2017 Tattoo: G205 Reg. #:19097917

Connealy Dublin 8223
 Connealy Guinness
 Panda of Conanga 3609
 TT Talking Thunder W174
 G-52 Ruby
 Hillside Queen Dolly 109

Lot 21

BW	Adj. WW	WW Ratio	Adj. YW	YW Ratio	Adj. IMF	IMF Ratio	Adj. REA	REA Ratio						
75	685	95	938	94	3.77	99	10.2	85						
	CED	BW	WW	YW	RADG	YH	SC	Doc	HP	CEM	Milk	MW	MH	\$EN
EPD	5	1.8	50	90						8	26			-11.25
ACC	0.22	0.34	0.29	0.28						0.17	0.18			
	CW	Marb	RE	Fat	\$W	\$F	\$G	\$QG	\$YG	\$B				
EPD	37	0.77	0.27	0.014	43.88	45.90	41.87	40.03	1.84	128.30				
ACC	0.24	0.21	0.24	0.21										

G & R Farms



G-219 Summitcrest Travler



ANGUS

Calved: 11/23/2017 Tattoo: G219 Reg. #:19283253

Summitcrest Complete 1P55
 Shady Brook Complete 4019
 Finks Donna 4165 J343 416
 Falls Creek Focus 726
 M A S F Ms Wix 139
 Ms Rachel Wix

Lot 22

BW	Adj. WW	WW Ratio	Adj. YW	YW Ratio	Adj. IMF	IMF Ratio	Adj. REA	REA Ratio						
68	752	101	1018	102	4.69	126	11.1	93						
	CED	BW	WW	YW	RADG	YH	SC	Doc	HP	CEM	Milk	MW	MH	\$EN
EPD	11	-0.3	42	72						12	31			-10.25
ACC	0.16	0.32	0.27	0.14						0.08	0.11			
	CW	Marb	RE	Fat	\$W	\$F	\$G	\$QG	\$YG	\$B				
EPD	26	0.75	0.27	-0.018	47.56	19.21	42.53	39.44	3.09	101.03				
ACC	0.21	0.17	0.21	0.18										

G & R Farms



G227 Bonanza's Rolling Rock



ANGUS

Calved: 11/15/2017 Tattoo: G227 Reg. #:19282602

Summitcrest Complete 1P55
 Shady Brook Complete 4019
 Finks Donna 4165 J343 416
 Emblazon S210
 Focus Ideal
 TF Jilt 5204 136

Lot 23

BW	Adj. WW	WW Ratio	Adj. YW	YW Ratio	Adj. IMF	IMF Ratio	Adj. REA	REA Ratio						
75	838	113	1076	108	3.98	107	9.3	78						
	CED	BW	WW	YW	RADG	YH	SC	Doc	HP	CEM	Milk	MW	MH	\$EN
EPD	8	0.5	49	85						10	27			-10.39
ACC	0.16	0.33	0.28	0.16						0.09	0.11			
	CW	Marb	RE	Fat	\$W	\$F	\$G	\$QG	\$YG	\$B				
EPD	33	0.60	0.13	0.027	48.10	37.52	34.43	34.62	-0.19	111.14				
ACC	0.21	0.16	0.20	0.18										

G & R Farms



G233 Right Time Conanga

ANGUS

Calved: 9/19/2017 Tattoo: G233 Reg. #:19282661

Connealy Onward
Sitz Wisdom 481T
Sitz Elluna Elite 94P
E E 338 Right Time 246
P-41 Mud Pie
C F Susie Mae 70

Lot 24

BW	Adj. WW	WW Ratio	Adj. YW	YW Ratio	Adj. IMF	IMF Ratio	Adj. REA	REA Ratio						
80	717	97	883	89	3.60	97	11.8	98						
	CED	BW	WW	YW	RADG	YH	SC	Doc	HP	CEM	Milk	MW	MH	\$EN
EPD	4	2.8	37	69						5	26			-1.95
ACC	0.21	0.35	0.30	0.28						0.16	0.22			
	CW	Marb	RE	Fat	\$W	\$F	\$G	\$QG	\$YG	\$B				
EPD	28	0.47	0.46	-0.006	30.53	17.34	36.10	29.68	6.42	98.59				
ACC	0.23	0.19	0.23	0.20										

G & R Farms



G223 Right Time Focus

★ **Balanced**

ANGUS

Calved: 9/19/2017 Tattoo: G223 Reg. #:19283542

A A R Ten X 7008 S A
MAR Double XL 320
CAR Miss Amy 591
MF Net Return 8197
SSP Heather 8197 G221
SSP Elvira L856 T510

Lot 25

BW	Adj. WW	WW Ratio	Adj. YW	YW Ratio	Adj. IMF	IMF Ratio	Adj. REA	REA Ratio						
78	717	97	986	100	3.11	84	14.0	117						
	CED	BW	WW	YW	RADG	YH	SC	Doc	HP	CEM	Milk	MW	MH	\$EN
EPD	7	1.6	49	91						8	20			-3.66
ACC	0.22	0.34	0.30	0.28						0.13	0.15			
	CW	Marb	RE	Fat	\$W	\$F	\$G	\$QG	\$YG	\$B				
EPD	33	0.43	0.49	0.021	36.71	48.44	31.88	27.94	3.94	110.64				
ACC	0.23	0.19	0.23	0.19										

G & R Farms



G-219 Summitcrest Travler

★ **Calving Ease**

ANGUS

Calved: 11/23/2017 Tattoo: G219 Reg. #:19283253

Summitcrest Complete 1P55
Shady Brook Complete 4019
Finks Donna 4165 J343 416
Falls Creek Focus 726
M A S F Ms Wix 139
Ms Rachel Wix

Lot 26

BW	Adj. WW	WW Ratio	Adj. YW	YW Ratio	Adj. IMF	IMF Ratio	Adj. REA	REA Ratio						
68	752	101			4.69	126	11.1	93						
	CED	BW	WW	YW	RADG	YH	SC	Doc	HP	CEM	Milk	MW	MH	\$EN
EPD	11	-0.3	42	72						12	31			-10.25
ACC	0.16	0.32	0.27	0.14						0.08	0.11			
	CW	Marb	RE	Fat	\$W	\$F	\$G	\$QG	\$YG	\$B				
EPD	26	0.75	0.27	-0.018	47.56	19.21	42.53	39.44	3.09	101.03				
ACC	0.21	0.17	0.21	0.18										

Thames Angus Farm



TAF 7333 Right Answer 147



Balanced, Terminal

ANGUS

Calved: 10/4/2017 Tattoo: 147 Reg. #: 19195568

Connealy Right Answer 746
TAF Right Answer 7333
TAF Erica 6121
TAF Traveler 004 1172
TAF Bessie 135
TAF Bessie 102

Lot 27

BW	Adj. WW	WW Ratio	Adj. YW	YW Ratio	Adj. IMF	IMF Ratio	Adj. REA	REA Ratio						
49	555	96	984	94										
	CED	BW	WW	YW	RADG	YH	SC	Doc	HP	CEM	Milk	MW	MH	\$EN
EPD	5	2.0	55	89	0.19	0.6	0.74	14	11.2	10	24	24	0.1	-2.56
ACC	0.28	0.49	0.41	0.34	0.19	0.31	0.32	0.26	0.15	0.21	0.24	0.25	0.30	
	CW	Marb	RE	Fat	\$W	\$F	\$G	\$QG	\$YG	\$B				
EPD	33	0.60	0.27	0.045	55.09	49.64	34.16	34.62	-0.46	120.54				
ACC	0.35	0.29	0.30	0.26										

Thames Angus Farm



TAF 2125 Upward 1707



Terminal

ANGUS

Calved: 11/15/2017 Tattoo: 1707 Reg. #: 19296566

Sitz Upward 307R
TAF Upward 2125
TAF New Design 878 212
Connealy Thunder
TAF Princess 954
TAF Princess 932

Lot 28

BW	Adj. WW	WW Ratio	Adj. YW	YW Ratio	Adj. IMF	IMF Ratio	Adj. REA	REA Ratio						
70	636	108	1228	103										
	CED	BW	WW	YW	RADG	YH	SC	Doc	HP	CEM	Milk	MW	MH	\$EN
EPD	4	3.2	72	126	0.32	1.2	0.71	12	10.6	12	29	47	0.8	-22.59
ACC	0.32	0.52	0.44	0.38	0.25	0.37	0.38	0.05	0.21	0.27	0.29	0.31	0.36	
	CW	Marb	RE	Fat	\$W	\$F	\$G	\$QG	\$YG	\$B				
EPD	61	-0.10	0.53	0.0	68.03	100.61	0.66	24.29	-1.49	139.73				
ACC	0.40	0.35	0.35	0.31										

Thames Angus Farm



TAF 6464 Ten X 6057



Terminal

ANGUS

Calved: 1/3/2017 Tattoo: 6057 Reg. #: 18973629

A A R Ten X 7008 S A
TAF Ten X 6464
TAF Princess 6465
A A R Ten X 7008 S A
TAF Princess 6564
TAF Princess 6176

Lot 29

BW	Adj. WW	WW Ratio	Adj. YW	YW Ratio	Adj. IMF	IMF Ratio	Adj. REA	REA Ratio						
60	580	113	959	100										
	CED	BW	WW	YW	RADG	YH	SC	Doc	HP	CEM	Milk	MW	MH	\$EN
EPD	3	2.4	59	106	0.32	0.8	0.67	19	10.9	11	31	28	0.5	-16.92
ACC	0.31	0.51	0.43	0.35	0.23	0.35	0.37	0.31	0.19	0.26	0.28	0.30	0.35	
	CW	Marb	RE	Fat	\$W	\$F	\$G	\$QG	\$YG	\$B				
EPD	45	-0.05	0.72	-0.044	61.46	73.99	10.60	1.61	8.99	121.38				
ACC	0.39	0.34	0.34	0.30										

Thames Angus Farm



TAF Authentic 6186
★ **Balanced, Carcass Merit**

G A R New Design 5050
EF Authentic 0829
2 Bar Objective 7836
Salt Creek Bob 7003
TAF Princess 6186
TAF Princess 6467

Lot 30

ANGUS

Calved: 12/15/2016 Tattoo: 6186 Reg. #: 19003755

BW	Adj. WW	WW Ratio	Adj. YW	YW Ratio	Adj. IMF	IMF Ratio	Adj. REA	REA Ratio						
68	603	101	974	100										
	CED	BW	WW	YW	RADG	YH	SC	Doc	HP	CEM	Milk	MW	MH	\$EN
EPD	7	1.0	52	94	0.25	0.7	0.27	15	7.8	9	35	28	0.2	-19.77
ACC	0.34	0.53	0.46	0.37	0.26	0.37	0.40	0.33	0.18	0.29	0.32	0.29	0.34	
	CW	Marb	RE	Fat	\$W	\$F	\$G	\$QG	\$YG	\$B				
EPD	36	0.52	0.74	-0.015	60.51	50.10	39.98	31.65	8.33	123.79				
ACC	0.38	0.34	0.34	0.30										

Thames Angus Farm



TAF Excitement 7116
★ **Terminal**

Basin Expedition R156
Basin Excitement
Basin Lady S532 AK
Hoff Limited Edition S C 594
TAF Inez 711
TAF Inez 683

Lot 31

ANGUS

Calved: 11/5/2016 Tattoo: 7116 Reg. #: 19362121

BW	Adj. WW	WW Ratio	Adj. YW	YW Ratio	Adj. IMF	IMF Ratio	Adj. REA	REA Ratio						
60	667	100	928	100										
	CED	BW	WW	YW	RADG	YH	SC	Doc	HP	CEM	Milk	MW	MH	\$EN
EPD	I+4	I+2.4	I+60	I+107	I+.25	I+.20	I+.61	I+18	I+12.0	I+8	I+21	I+40	I+.6	-4.46
ACC	0.05	0.05	0.05	0.05	0.05	0.05	0.05	0.05	0.05	0.05	0.05	0.05	0.05	
	CW	Marb	RE	Fat	\$W	\$F	\$G	\$QG	\$YG	\$B				
EPD	I+39	I+.27	I+.48	I+.006	52.60	71.88	24.66	20.39	4.27	121.34				
ACC	0.05	0.05	0.05	0.05										

Vista Farms Cattle Co. LLC



VF Weigh Up E071
★ **Balanced, Terminal, Carcas Merit**

Sitz Upward 307R
Plattermere Weigh Up K360
Barbara of Plattermere 337
EXAR 263C
EXAR Lady Blanche 9056
Exar Lady Blanche 372

Lot 32

ANGUS

Calved: 1/14/2017 Tattoo: E071 Reg. #: 19137940

BW	Adj. WW	WW Ratio	Adj. YW	YW Ratio	Adj. IMF	IMF Ratio	Adj. REA	REA Ratio						
82	649	94	971	100										
	CED	BW	WW	YW	RADG	YH	SC	Doc	HP	CEM	Milk	MW	MH	\$EN
EPD	9	1.4	67	120	0.17	0.3	0.40	22	11	9	18	64	0.6	-7.59
ACC	0.36	0.55	0.49	0.42	0.28	0.41	0.44	0.37	0.25	0.34	0.35	0.35	0.40	
	CW	Marb	RE	Fat	\$W	\$F	\$G	\$QG	\$YG	\$B				
EPD	46	0.83	0.66	-0.017	56.29	71.24	48.70	41.66	7.04	142.00				
ACC	0.44	0.40	0.39	0.36										

Vista Farms Cattle Co. LLC



HR Resource 7E
★ Terminal, Carcas Merit

Rito 707 of Ideal 3407 7075
S A V Resource 1441
S A V Blackcap May 4136
Connealy In Focus 4925
Highlander Blackcap 218
G A R Predestined 3528

Lot 33

Calved: 8/31/2017 Tattoo: 7E Reg. #: 19049105

BW	Adj. WW	WW Ratio	Adj. YW	YW Ratio	Adj. IMF	IMF Ratio	Adj. REA	REA Ratio						
65	662	96	987	100	3.58	100	12.1	100						
CED	BW	WW	YW	RADG	YH	SC	Doc	HP	CEM	Milk	MW	MH	\$EN	
EPD	2	2.0	60	112	0.22	-0.1	1.55	26	12.5	2	23	30	-0.3	-6.38
ACC	0.36	0.54	0.46	0.40	0.28	0.41	0.42	0.37	0.27	0.32	0.27	0.35	0.40	
CW	Marb	RE	Fat	\$W	\$F	\$G	\$QG	\$YG	\$B					
EPD	45	0.76	0.67	0.67	56.68	74.08	43.33	39.75	3.58	145.65				
ACC	0.42	0.38	0.38	0.38										

Vista Farms Cattle Co. LLC



VF Cowboy Up E197
★ Balanced, Terminal, Carcass Merit

HA Outside 3008
HA Cowboy Up 5405
HA Blackcap Lady 1602
G A R Sunrise
G A R Sunrise 1482
G A R 5050 New Design T179

Lot 34

Calved: 7/22/2017 Tattoo: E197 Reg. #: 19136219

BW	Adj. WW	WW Ratio	Adj. YW	YW Ratio	Act. IMF	IMF Ratio	Act. REA	REA Ratio						
72	725	100	960	100	4.79	100	14.3	100						
CED	BW	WW	YW	RADG	YH	SC	Doc	HP	CEM	Milk	MW	MH	\$EN	
EPD	6	2.2	69	117	0.30	0.1	0.73	19	13.1	9	20	45	0.2	-6.65
ACC	0.35	0.52	0.45	0.40	0.24	0.44	0.45	0.40	0.25	0.29	0.29	0.32	0.38	
CW	Marb	RE	Fat	\$W	\$F	\$G	\$QG	\$YG	\$B					
EPD	33	0.69	0.86	-0.028	62.47	91.26	48.17	37.73	10.44	142.60				
ACC	0.41	0.39	0.38	0.35										

Vista Farms Cattle Co. LLC



VF Investment E205
★ Balanced, Terminal

Connealy Final Product
Sitz Investment 660Z
Sitz Ellunas Elite 656T
KMK Alliance 6595 187
Bentons 4416 Obj 803 1011
Bentons 4414 Queen 4416

Lot 35

Calved: 7/23/2017 Tattoo: E205 Reg. #: 19137964

BW	Adj. WW	WW Ratio	Adj. YW	YW Ratio	Act. IMF	IMF Ratio	Act. REA	REA Ratio						
64	713	95	1073	100	3.28	100	13.6	100						
CED	BW	WW	YW	RADG	YH	SC	Doc	HP	CEM	Milk	MW	MH	\$EN	
EPD	5	0.1	59	112	0.19	0.6	1.53	29	6.4	9	30	51	0.6	-20.31
ACC	0.32	0.48	0.45	0.37	0.21	0.37	0.38	0.33	0.23	0.29	0.32	0.30	0.35	
CW	Marb	RE	Fat	\$W	\$F	\$G	\$QG	\$YG	\$B					
EPD	45	0.34	0.54	0.035	61.03	71.76	25.33	23.80	1.53	124.76				
ACC	0.38	0.34	0.34	0.30										

Vista Farms Cattle Co. LLC



VF Namesake E211

★ Calving Ease, Balanced, Terminal, Carcass Merit

ANGUS

Calved: 7/24/2017 Tattoo: E211 Reg. #:19137944

Connealy Impression
Connealy Namesake 10X
Mc Black Lillian 9011
LCC New Standard
BE Blackbird 113
Lemmon Blackbird L184

Lot 36

BW	Adj. WW	WW Ratio	Adj. YW	YW Ratio	Act. IMF	IMF Ratio	Act. REA	REA Ratio						
68	810	108	1053	85	7.45	100	16.1	100						
	CED	BW	WW	YW	RADG	YH	SC	Doc	HP	CEM	Milk	MW	MH	\$EN
EPD	13	-0.5	60	95	0.17	0.4	-0.77	28	16.5	8	24	48	0.5	-7.21
ACC	0.33	0.49	0.46	0.41	0.24	0.46	0.46	0.34	0.20	0.29	0.32	0.30	0.35	
	CW	Marb	RE	Fat	\$W	\$F	\$G	\$QG	\$YG	\$B				
EPD	47	1.13	0.87	0.87	62.91	44.81	56.31	48.65	7.66	158.80				
ACC	0.39	0.35	0.35	0.35										

Vista Farms Cattle Co. LLC



VF DVF Payweight E257

★ Terminal

ANGUS

Calved: 8/6/2017 Tattoo: E257 Reg. #: 19135929

Basin Payweight 006S
Basin Payweight 1682
21AR O Lass 7017
Bon View New Design 878
Deer Valley Rita 0603
G A R Ext 614

Lot 37

BW	Adj. WW	WW Ratio	Adj. YW	YW Ratio	Adj. IMF	IMF Ratio	Adj. REA	REA Ratio						
72	705	94	1179	96	4.57	110	14.1	101						
	CED	BW	WW	YW	RADG	YH	SC	Doc	HP	CEM	Milk	MW	MH	\$EN
EPD	3	1.6	59	93	0.15	0.1	0.63	14	12.4	7	36	13	0.2	-18.40
ACC	0.36	0.50	0.47	0.43	0.30	0.48	0.48	0.37	0.27	0.33	0.34	0.35	0.40	
	CW	Marb	RE	Fat	\$W	\$F	\$G	\$QG	\$YG	\$B				
EPD	30	0.76	0.18	0.062	73.69	52.67	36.98	39.75	-2.77	116.34				
ACC	0.43	0.40	0.40	0.37										

Vista Farms Cattle Co. LLC



VF Journey E272

★ Balanced, Terminal, Carcass Merit

ANGUS

Calved: 8/12/2017 Tattoo: E272 Reg. #:19135882

B/R Future Direction 4268
WR Journey-1X74
2 Bar 5050 New Design 7831
EXAR Upshot 0562B
EXAR Rita 3548
Deer Valley Rita 9349

Lot 38

BW	Adj. WW	WW Ratio	Adj. YW	YW Ratio	Adj. IMF	IMF Ratio	Adj. REA	REA Ratio						
71	724	97	1180	96	3.77	91	13.4	96						
	CED	BW	WW	YW	RADG	YH	SC	Doc	HP	CEM	Milk	MW	MH	\$EN
EPD	8	0.8	61	99	0.22	0.7	0.72	15	9.7	13	27	33	0.5	-10.65
ACC	0.34	0.49	0.46	0.41	0.27	0.46	0.47	0.35	0.22	0.31	0.32	0.31	0.36	
	CW	Marb	RE	Fat	\$W	\$F	\$G	\$QG	\$YG	\$B				
EPD	44	0.65	0.86	0.006	65.90	58.20	43.26	36.34	6.92	148.32				
ACC	0.42	0.38	0.38	0.35										

R & K Cattle



R and K's Stovall
 ★ Terminal, Carcass Merit

RITO 707 OF IDEAL 3407 7075
 S A V RESOURCE 1441
 S A V BLACKCAP MAY 4136
 BMR EXPLORER
 IL STAR 41X
 SFV/CLRWTR SHEZA STAR

SimAngus (1/2 SM 1/2 AN)

Calved: 10/8/2017 Tattoo: E21B Reg. #:3417034

Lot 42

BW	Adj. WW	WW Ratio	Adj. YW	YW Ratio	Adj. IMF	IMF Ratio	Adj. REA	REA Ratio		
78	624	98	1130		2.74	78	13.62	92		
	CE	BW	WW	YW	ADG	MCE	Milk	MWW	Stay	Doc
EPD	8.7	1.4	68.2	111.8	0.27	2.2	18.2	52.2	13.9	8.5
ACC	0.22	0.24	0.29	0.31	0.31	0.21	0.22	0.25	0.13	0.25
	CW	YG	Marb	BF	REA	Shr	API	TI		
EPD	47.8	-0.15	0.12	-0.025	0.77	-0.38	109.9	65.6		
ACC	0.33	0.26	0.28	0.27	0.27	0.04				

R & K Cattle



R and K's Hatcher
 ★ Balanced, Terminal

MR NLC UPGRADE U8676
 RYALS GRADE UP
 LIMESTONE ROYAL LASS S600
 KRIEGERS MR RIGHT Z185
 RYALS MISS HARVEY 89
 HARVEY MISS ENAMEL 218

SimAngus (1/2 SM, 1/2 AN)

Calved: 11/5/2017 Tattoo: E10B Reg. #:3417031

Lot 43

BW	Adj. WW	WW Ratio	Adj. YW	YW Ratio	Adj. IMF	IMF Ratio	Adj. REA	REA Ratio		
75	722	113	1095		3.39	97	13.29	90		
	CE	BW	WW	YW	ADG	MCE	Milk	MWW	Stay	Doc
EPD	10.3	2.1	77.7	121.4	0.27	5.8	22.8	61.6	12.5	8.8
ACC	0.14	0.17	0.26	0.28	0.28	0.12	0.15	0.19	0.07	0.11
	CW	YG	Marb	BF	REA	Shr	API	TI		
EPD	44.9	-0.09	0.45	-0.036	0.47		128.6	78.9		
ACC	0.28	0.21	0.23	0.20	0.26					