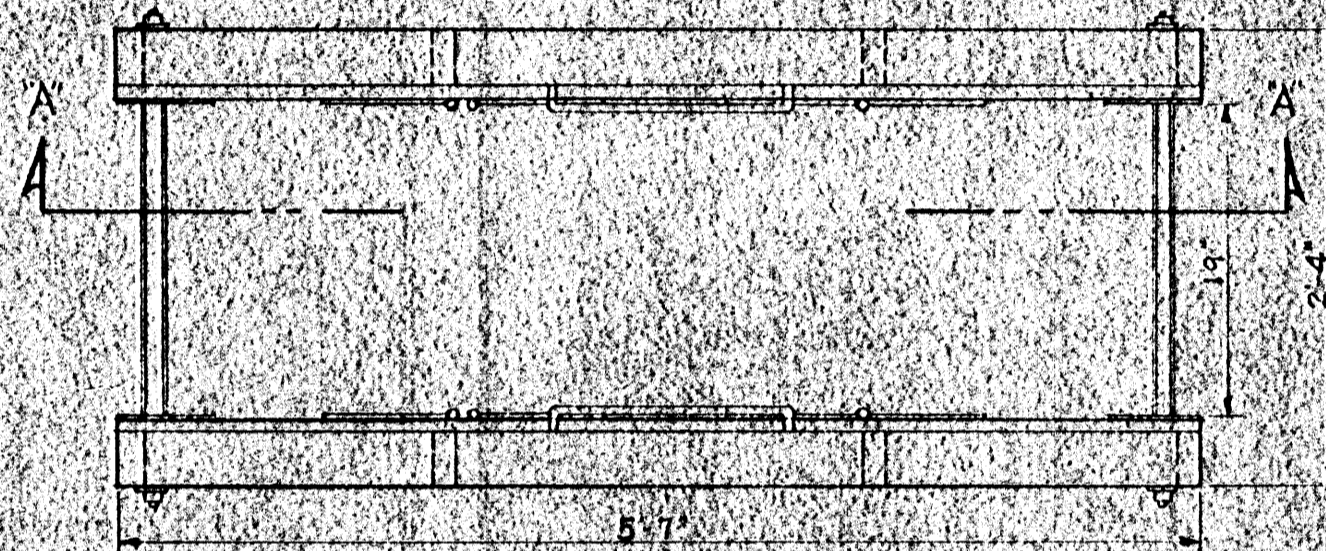
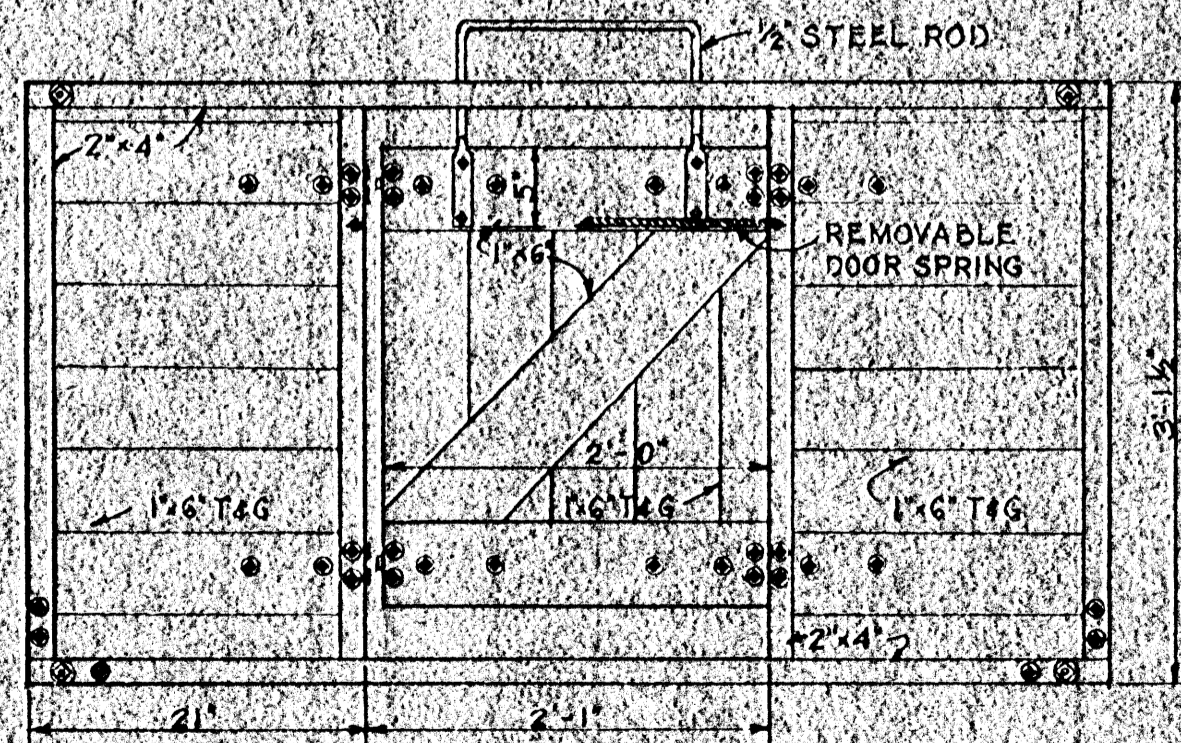


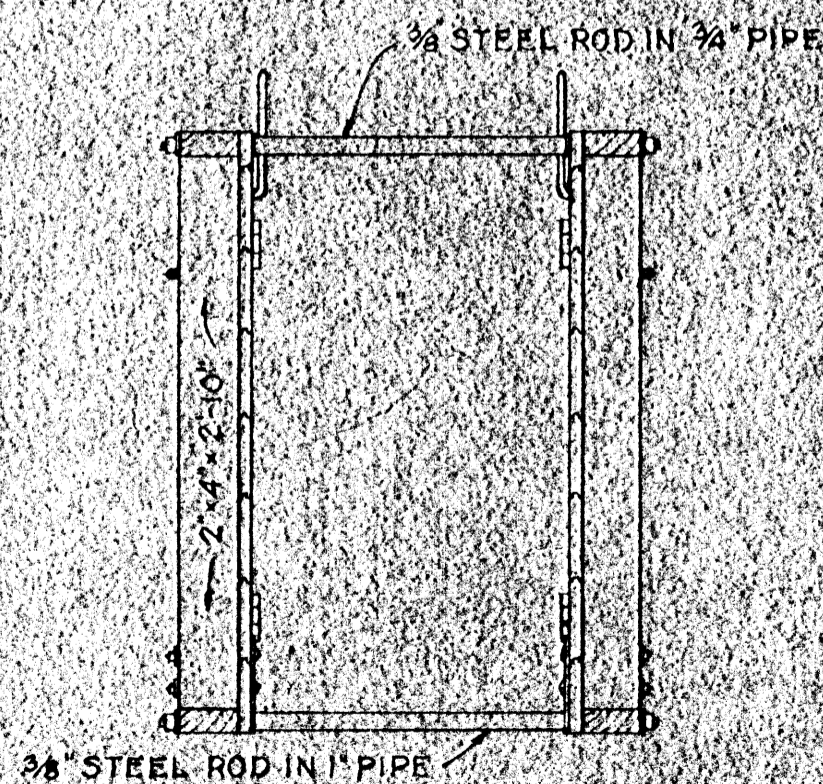
SECTION A-A



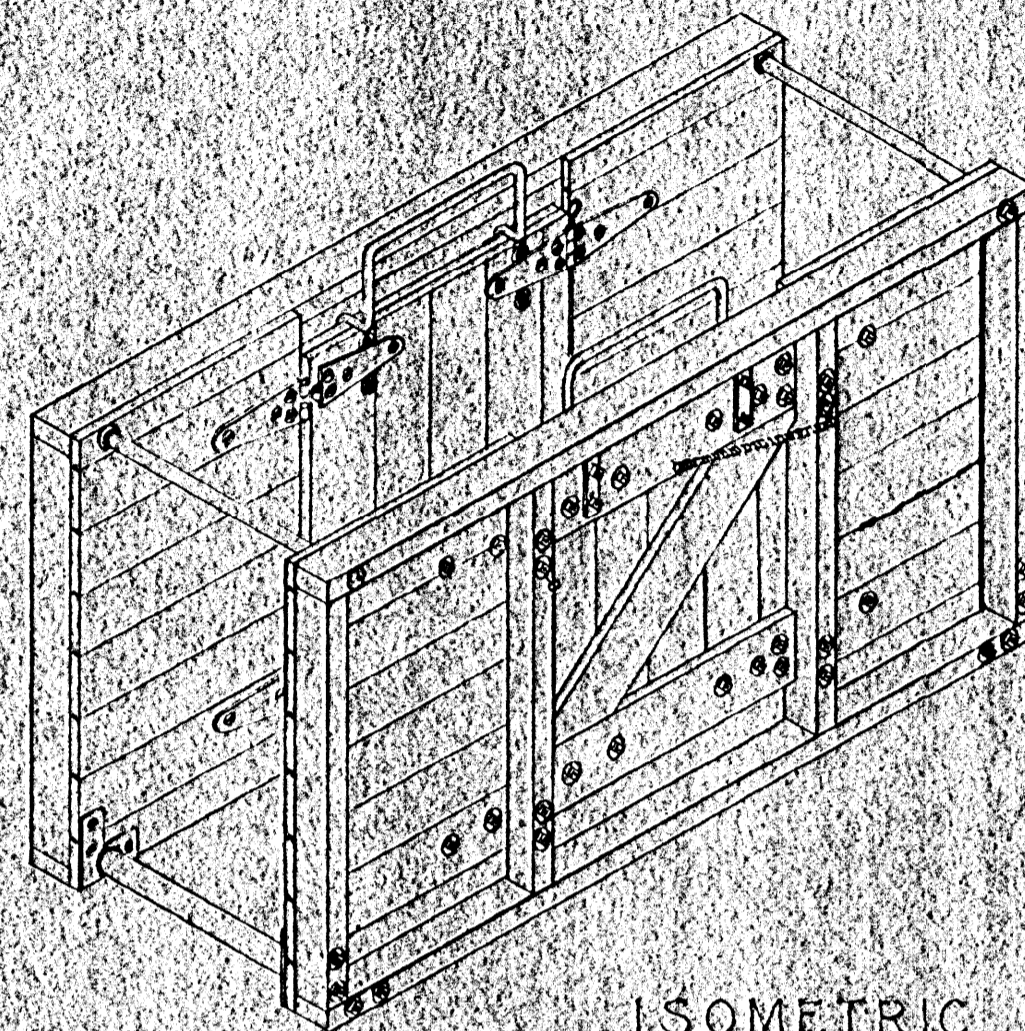
PLAN



SIDE ELEVATION



END ELEVATION



ISOMETRIC
SCALE: 3/4" = 1'-0"

NOTE:
FOR BOTH DOORS-
DOOR SPRING AND HINGE PIN ROD CAN
BE MOVED TO OTHER EDGE OF DOOR
TO REVERSE DIRECTION OF DOOR OPENING.

SCALE: 1/2" = 1'-0" EXCEPT WHERE OTHERWISE NOTED.

COOPERATIVE EXTENSION WORK IN
AGRICULTURE AND HOME ECONOMICS
STATE OF MISSISSIPPI
MISSISSIPPI STATE UNIVERSITY
AND
UNITED STATES DEPARTMENT OF AGRICULTURE COOPERATING

THREE-WAY CUTTING GATES
FOR SHEEP

MONT. '58 EX. 5859 SHEET 1 OF 1