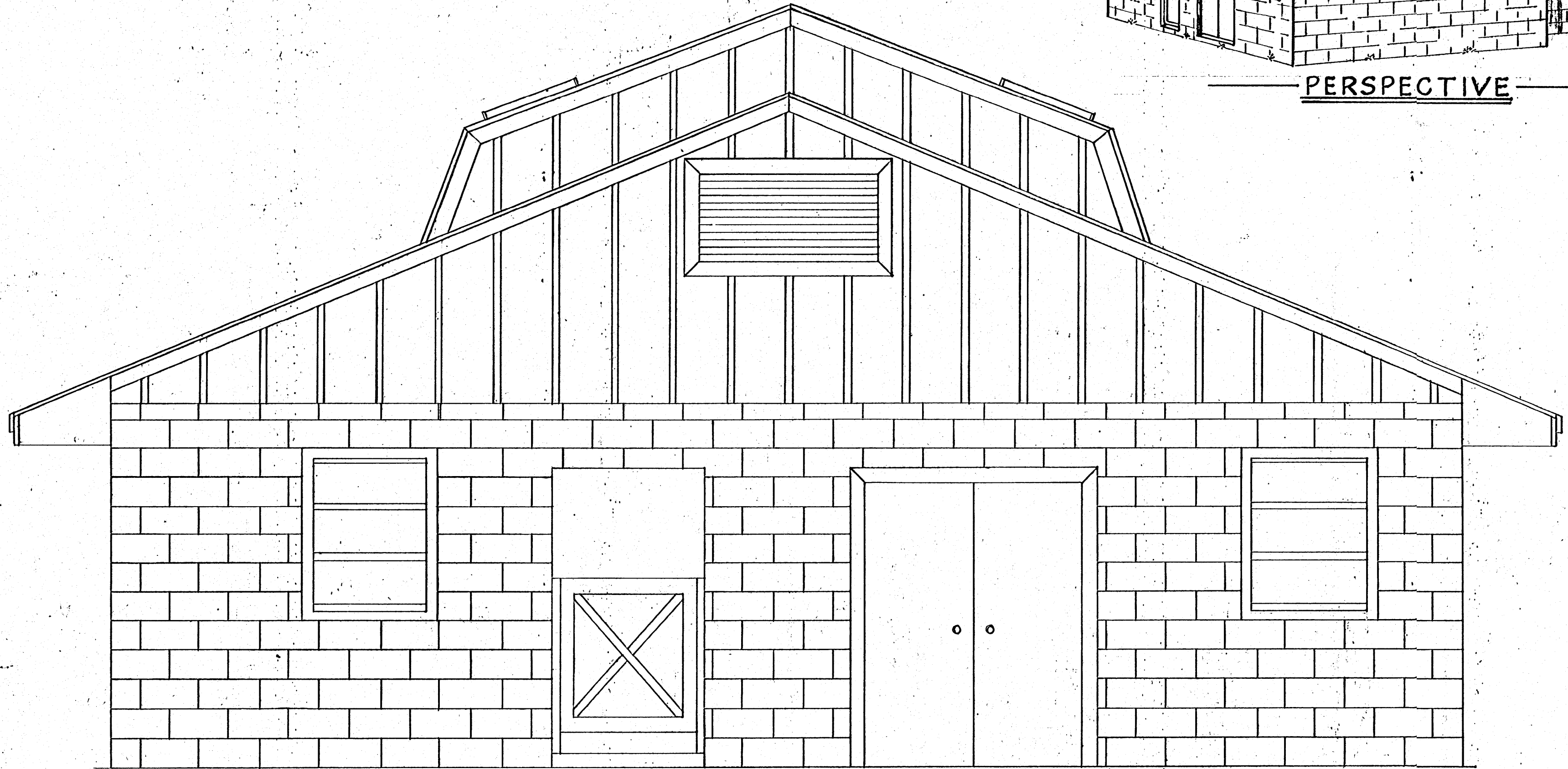


PERSPECTIVE

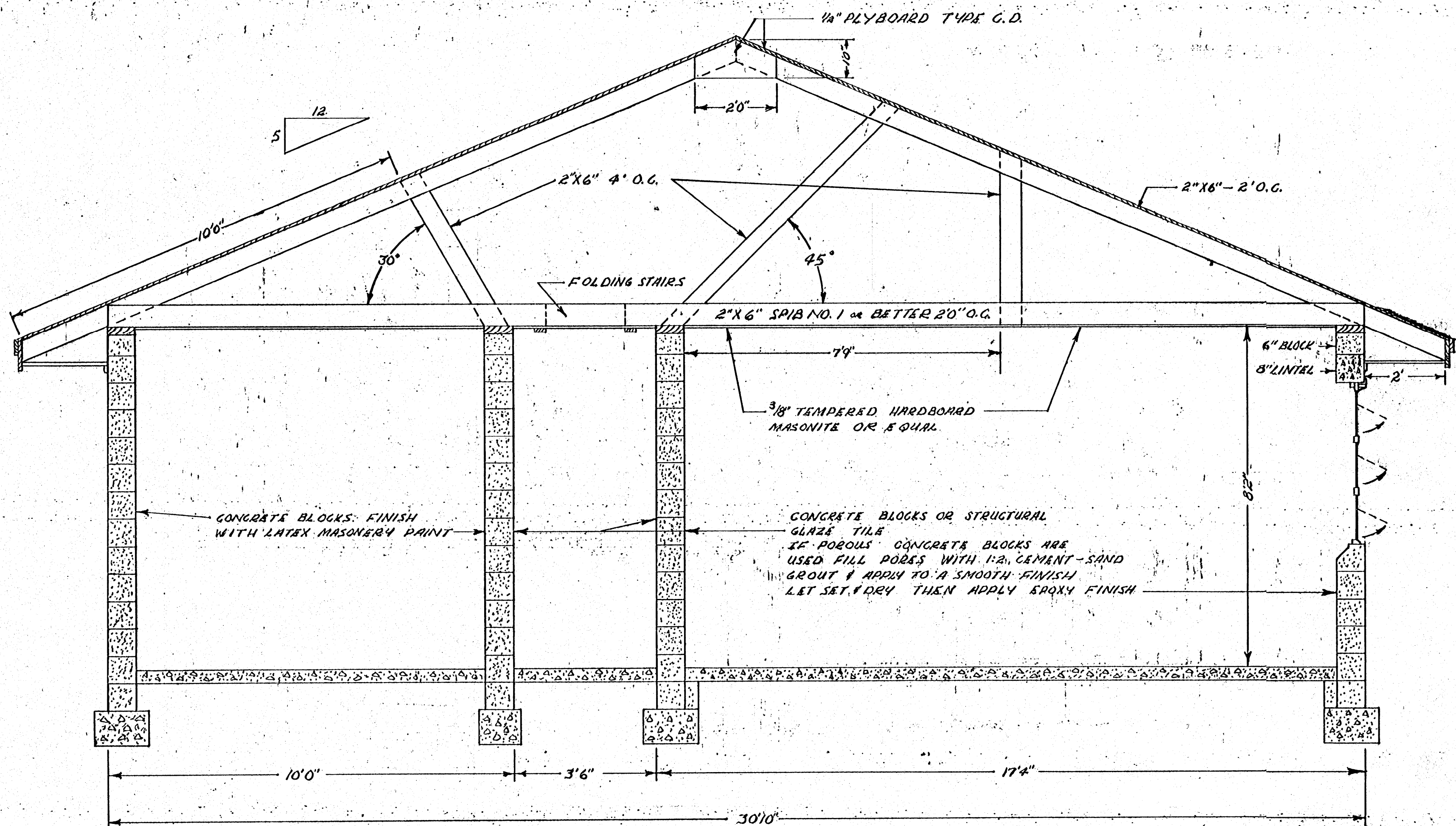


FRONT ELEVATION

SCALE 1/8" = 1'0"

DOUBLE FOUR HERRINGBONE MILKING BARN		
COOPERATIVE EXTENSION SERVICE STATE OF MISSISSIPPI - MISSISSIPPI STATE UNIVERSITY AND U.S. DEPT. OF AGRICULTURE COOPERATIVE		
DESIGNED BY - LIM	CHECKED BY - LIM	DRAWN BY
APPROVED BY		
NO. D-14	SHEET 1 of 1	

No. 5868-B



DOUBLE FOUR HERRINGBONE MILKING BARN

Cooperative Extension Service
 STATE OF MISSISSIPPI - MISSISSIPPI STATE UNIVERSITY
 AND
 U.S. DEPT. OF AGRICULTURE COOPERATIVE EXTENSION SERVICE
 DESIGNED BY L.M. CHECKED BY R.M. DRAWN BY D.E.
 APPROVED BY

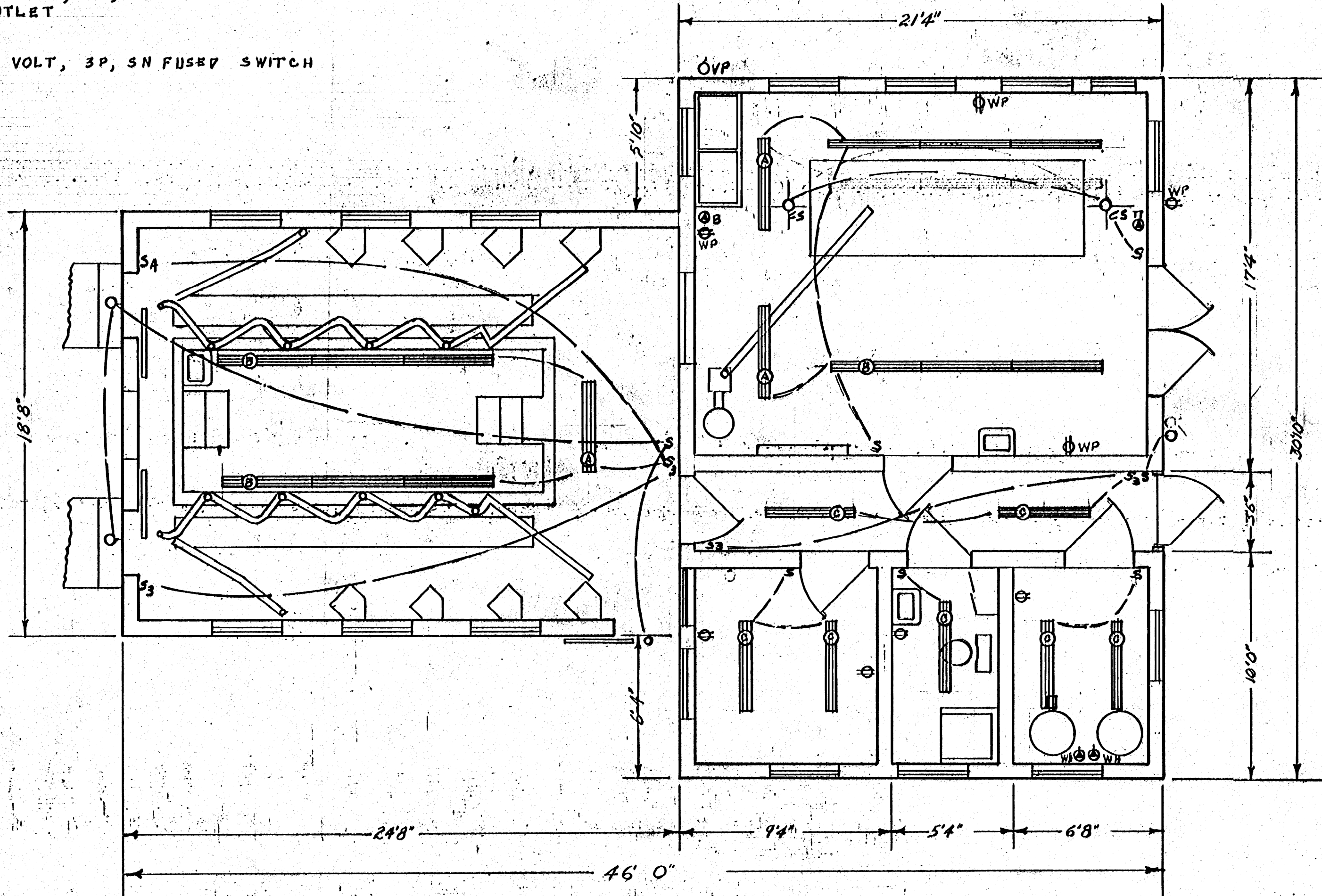
No. 5868-B

ELECTRICAL SYMBOLS

- S SINGLE-POLE SWITCH
- S₃ THREE-WAY SWITCH
- S₄ FOUR-WAY SWITCH
- CS SPOTLIGHT TO ILLUMINATE BULK MILK TANK OPENINGS. NO FIXTURES TO BE MOUNTED DIRECTLY ABOVE OPENINGS OF BULK TANK.
- ΦWP DOUBLE CONVEIENCE OUTLET GROUNDED, WATERPROOF
- VP MILKER VACCUM PUMP, 230 VOLT, 3P, 5N FUSED SWITCH, WATER PROOF
- B BULK MILK TANK, 230 VOLT, 3P, 5N FUSED SWITCH
- Φ DOUBLE CONVEIENCE OUTLET
- TT TANK TRUCK, 230 VOLT
- WH WATER HEATER, 230 VOLT, 3P, 5N FUSED SWITCH

LIGHTING FIXTURES

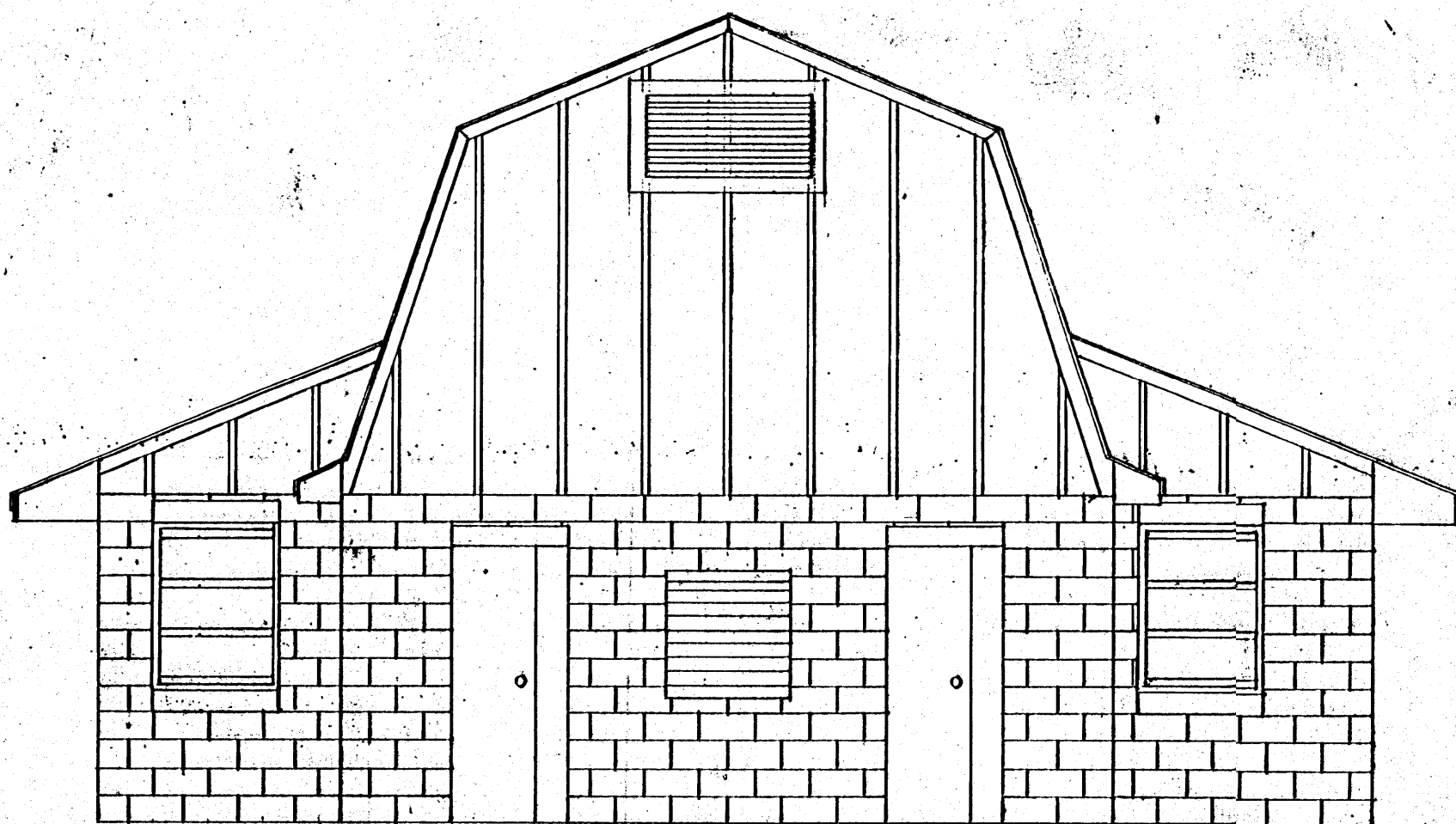
- | LTR, | REMARKS |
|------|---|
| A. | 2 - 40W FLUORESCENT TUBES WATER SHIELD TYPE FIXTURE |
| B. | 3 FLUORESCENT STRIPS 2 - 40W TUBES PER STRIP |
| C. | 2 - 40W FLUORESCENT TUBES |
| V. | WATER PROOF TYPE FIXTURE |



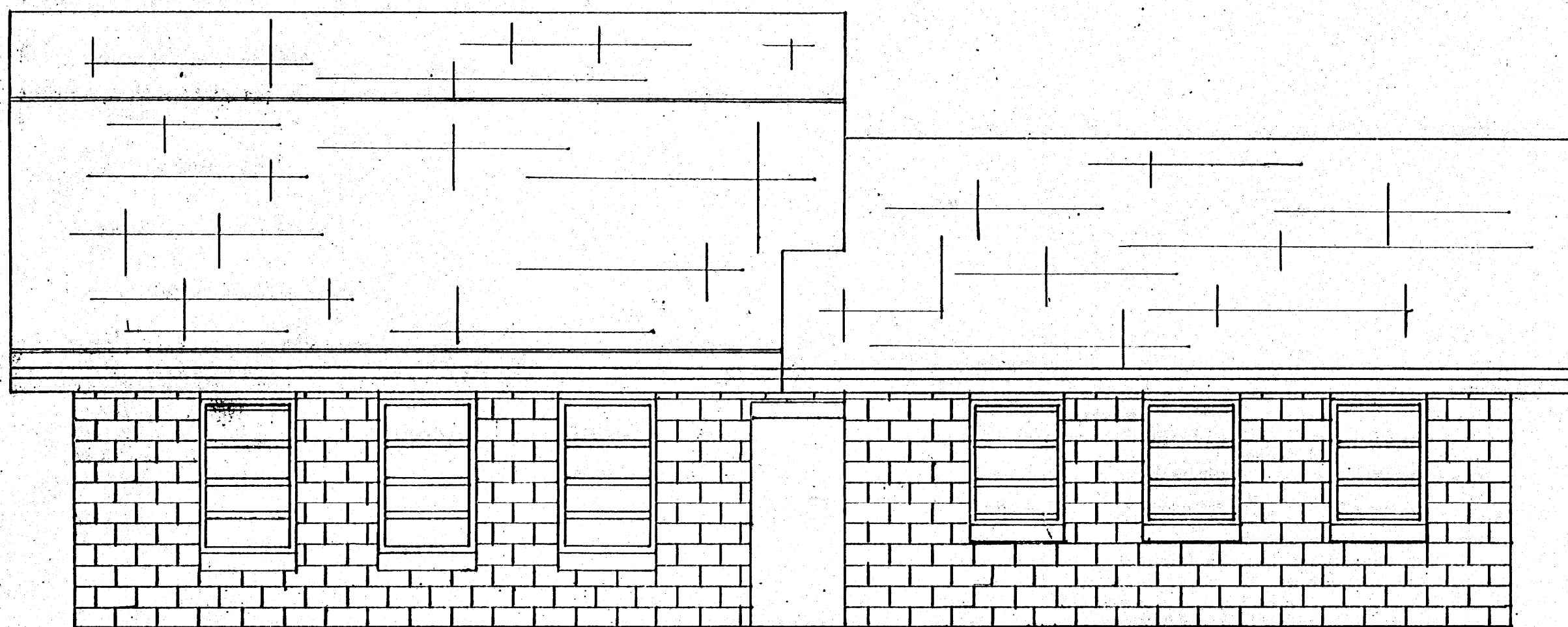
DOUBLE FOUR HERRINGBONE MILKING BARN

Cooperating Extension Service
 STATE OF MISSISSIPPI MISSISSIPPI UNIVERSITY
 AND
 U.S. DEPT. OF AGRICULTURE COOPERATING

DESIGNED BY: CHECKED BY: DWN:
 APPROVED BY:



REAR ELEVATION
SCALE 1/4" = 1' 0"



LEFT SIDE ELEVATION
SCALE 1/4" = 1' 0"

DOUBLE FOUR HERRINGBONE
MILKING BARN.
COOPERATIVE EXTENSION SERVICE
STATE OF MISS- MISS STATE UNIVERSITY
AND
U.S. DEPT. OF AGRICULTURE COOPERATING
DESIGNED BY LM CHECKED BY LM DRAWN BY DER
APPROVED BY
NO. 5868-B
NO. D-14 SHEET 7 of 7