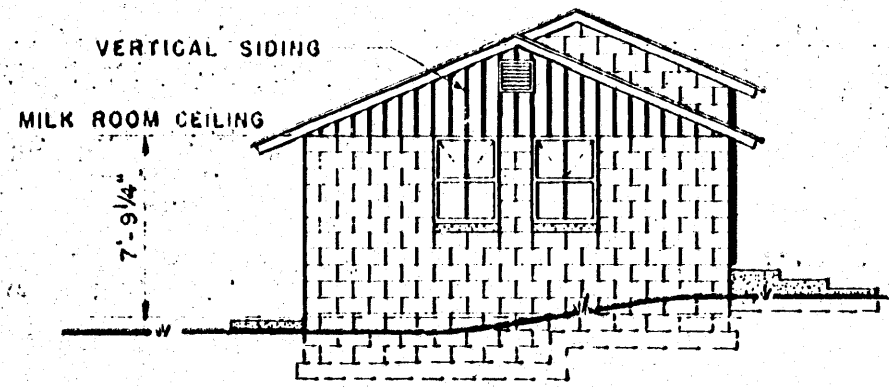
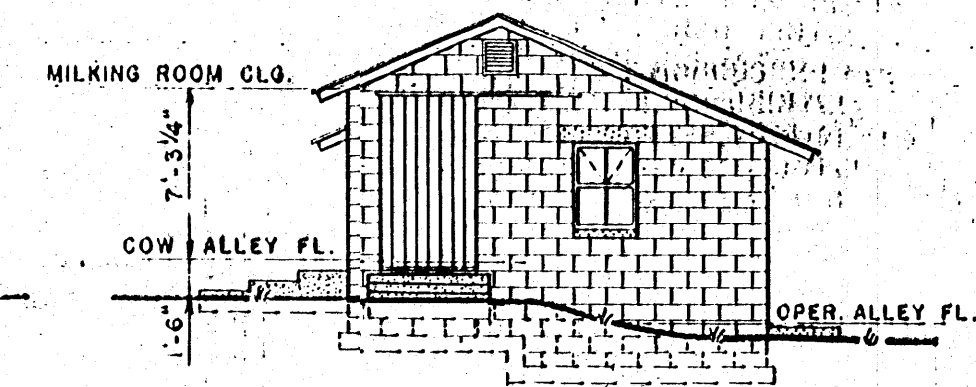


CUT-AWAY PERSPECTIVE



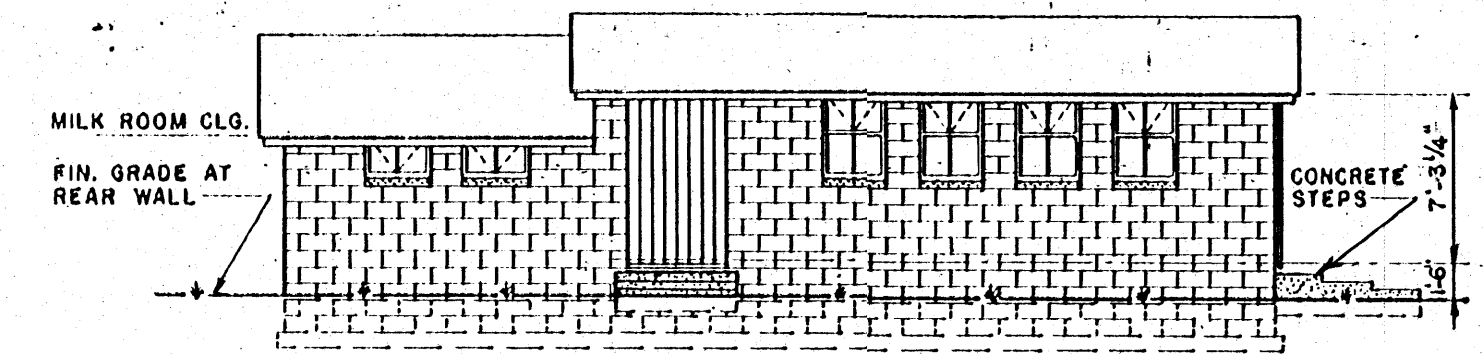
RIGHT END ELEVATION  
SCALE: 1/8" = 1'-0"



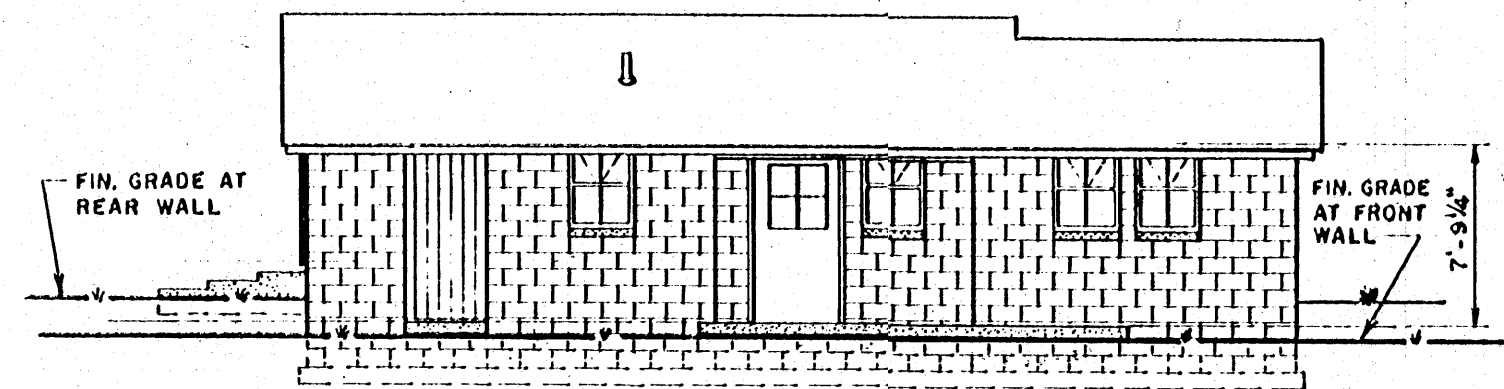
LEFT END ELEVATION  
SCALE: 1/8" = 1'-0"

WINDOW SCHEDULE				
NO.	WIDTH	HEIGHT	REMARKS	REQ.
A	2'-8"	3'-6"	STEEL UTILITY SASH	11
B	2'-8"	1'-10"	STEEL BASEMENT SASH	2

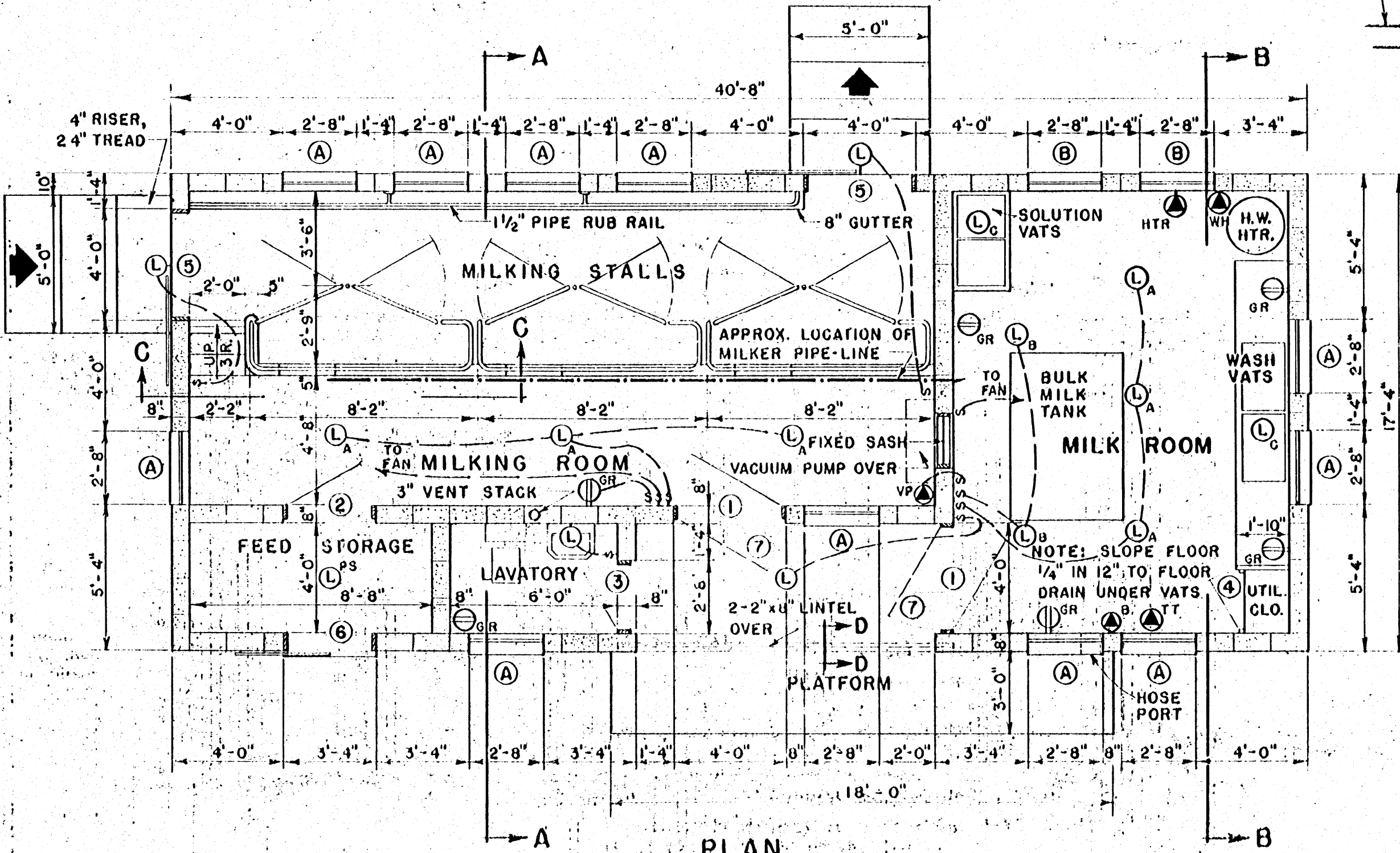
DOOR SCHEDULE					
NO.	WIDTH	HEIGHT	THK.	REMARKS	REQ.
1	3'-8"	6'-8"	1 3/8"	FLUSH WOOD, GLAZED	2
2	3'-0"	6'-8"	1 3/8"	FLUSH WOOD DOOR	1
3	2'-4"	6'-8"	1 3/8"	FLUSH WOOD DOOR	1
4	2'-0"	7'-0"	3/4"	PLYWOOD DOOR	1
5	4'-0"	7'-0"		T&G BATTEN DOOR	2
6	3'-4"	7'-0"		T&G BATTEN DOOR	1
7	3'-8"	6'-8"	1 1/8"	SCREEN DOOR	2



REAR ELEVATION  
SCALE: 1/8" = 1'-0"



FRONT ELEVATION  
SCALE: 1/8" = 1'-0"



PLAN  
SCALE: 1/4" = 1'-0"

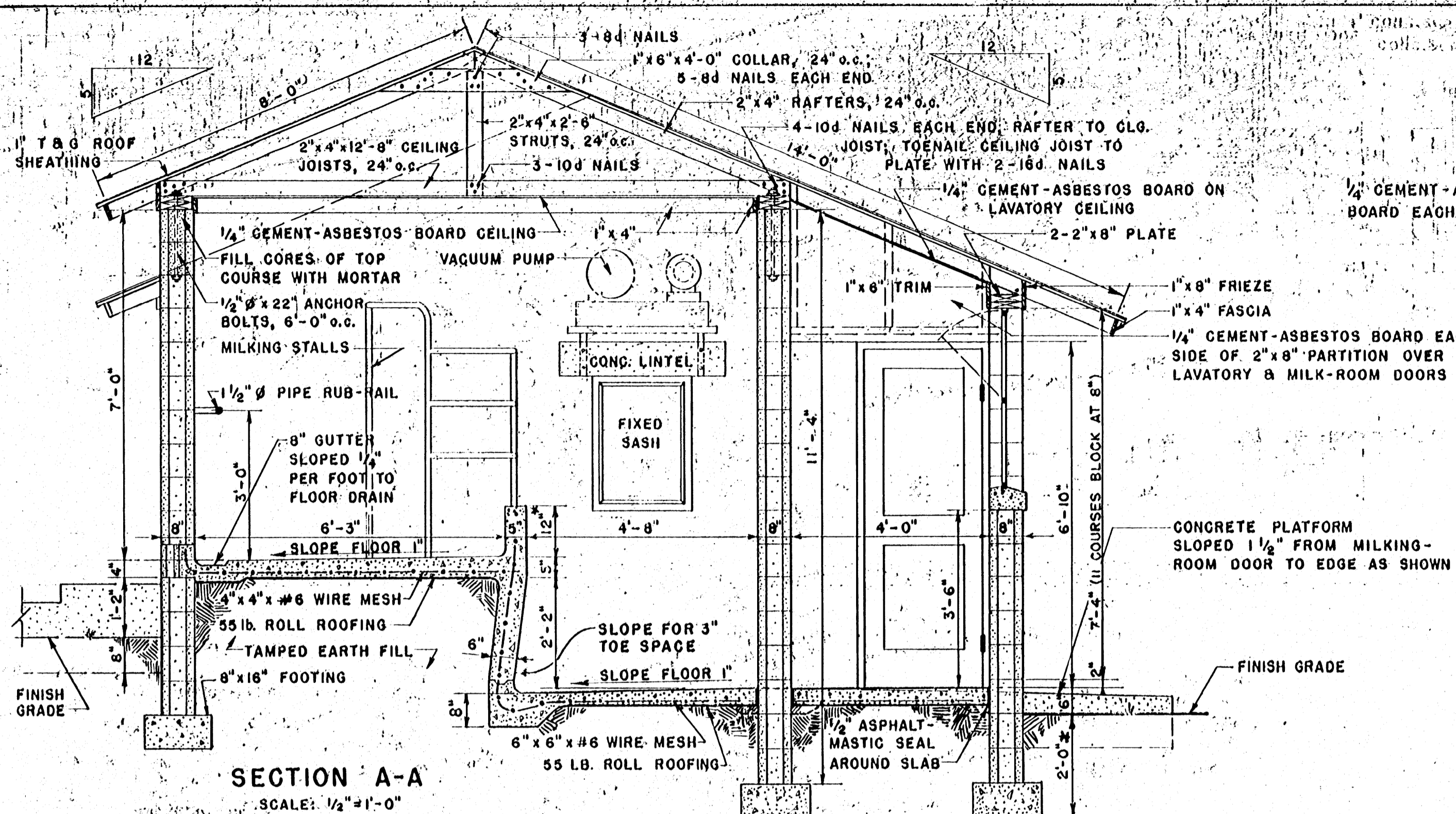
GENERAL NOTES

1. CONSULT LOCAL HEALTH AUTHORITIES BEFORE STARTING CONSTRUCTION TO BE SURE THAT PLAN CONFORMS WITH LOCAL REGULATIONS.
2. VARIABLE DIMENSIONS MARKED WITH \*. CARRY FOUNDATION TO SOLID GROUND BELOW FROST.
3. PRECAST CONCRETE LINTELS OVER OPENINGS HAVING MASONRY ABOVE, LINTELS TO HAVE 8" BEARING ON EACH END, REINFORCE LINTELS WITH 2-5/8" RODS 4" APART AND 1 1/2" FROM BOTTOM.
4. FILL BLOCK CORES UNDER ENDS OF LINTELS WITH CEMENT MORTAR.
5. CONCRETE FLOORS USED BY CATTLE TO HAVE BROOMED (ROUGH) FINISH.
6. PAINT EXTERIOR SURFACE OF BLOCK WALL WITH 2 COATS OF CEMENT PAINT ABOVE FINISH GRADE, PARGE WITH 1/2" CEMENT-MORTAR BELOW FIN. GRADE.
7. DRAINS TO MEET LOCAL CONDITIONS.

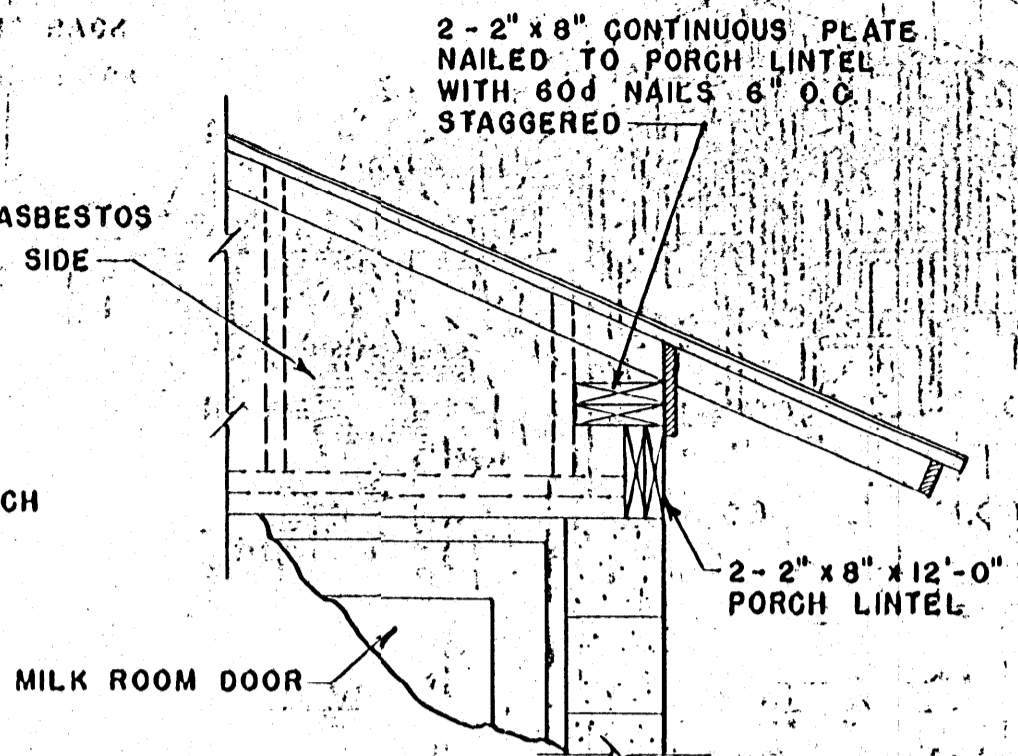
COOPERATIVE EXTENSION WORK IN  
AGRICULTURE AND HOME ECONOMICS  
STATE OF MISSISSIPPI  
MISSISSIPPI STATE UNIVERSITY  
AND  
UNITED STATES DEPARTMENT OF AGRICULTURE COOPERATING

**3-STALL MILKING PLANT**

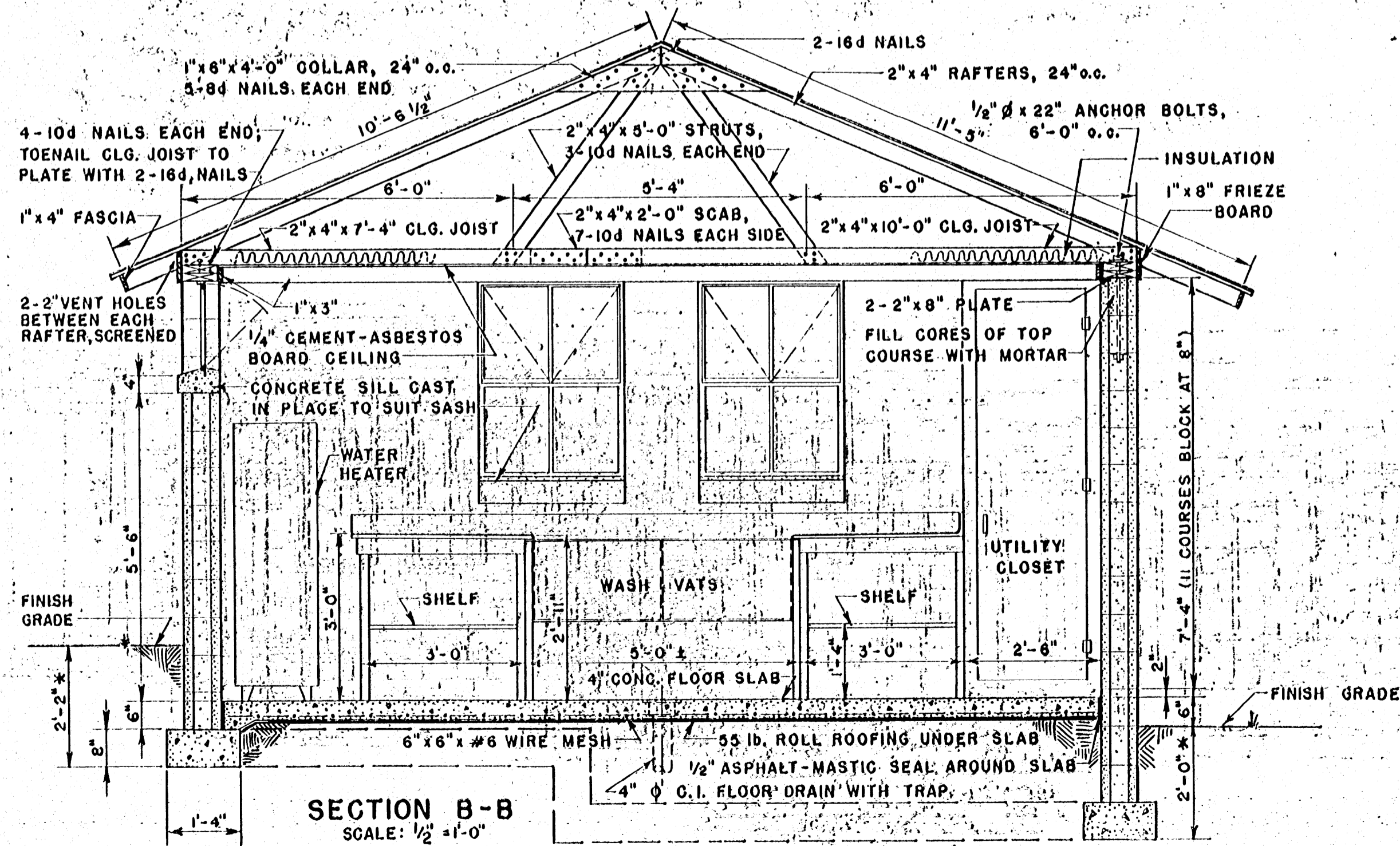
USDA 60, EX. 5875 SHEET 1 OF 2



**SECTION A-A**  
SCALE: 1/2" = 1'-0"



**SECTION D-D**  
SCALE: 1/2" = 1'-0"



**SECTION B-B**  
SCALE: 1/2" = 1'-0"

**ELECTRICAL SYMBOLS**

- S SWITCH
- (L)<sub>PS</sub> PULL SWITCH
- (L) LAMP
- (L)<sub>A</sub> 40 WATT FLUORESCENT, STRIP FIXTURE
- (L)<sub>B</sub> SPOTLIGHTS TO ILLUMINATE BULK MILK TANK OPENINGS. NO FIXTURES TO BE MOUNTED DIRECTLY ABOVE OPENINGS OF BULK TANK
- (L)<sub>C</sub> 250 WATT INFRARED LAMPS
- (G)<sub>GR</sub> DOUBLE CONVENIENCE OUTLET GROUNDED
- (V)<sub>VP</sub> MILKER VACUUM PUMP 230 VOLT, 3P, SN FUSED SWITCH
- (B) BULK MILK TANK 230 VOLT, 3P, SN FUSED SWITCH
- (T) TANK TRUCK 230 VOLT
- (W)<sub>WH</sub> WATER HEATER 230 VOLT, 3P, SN FUSED SWITCH
- (H)<sub>HTR</sub> HEATER

NOTE:  
\* VARIABLE DIMENSIONS

COOPERATIVE EXTENSION WORK IN  
AGRICULTURE AND HOME ECONOMICS  
STATE OF MISSISSIPPI  
MISSISSIPPI STATE UNIVERSITY  
UNITED STATES DEPARTMENT OF AGRICULTURE COOPERATING

---

**3-STALL MILKING PLANT**

---

USDA 60 EX. 5875 SHEET 2 OF 2