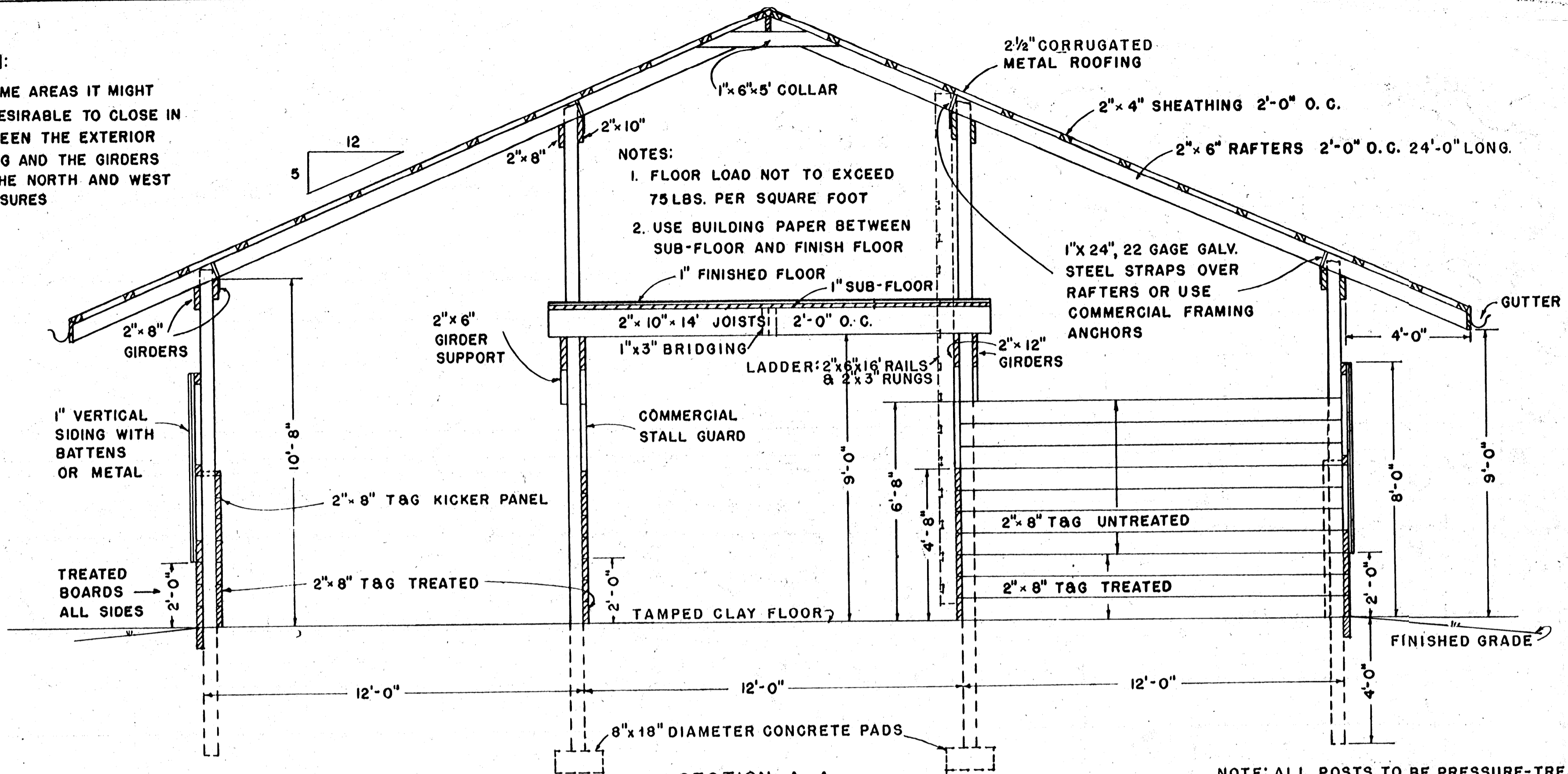


**NOTE I:**

IN SOME AREAS IT MIGHT BE DESIRABLE TO CLOSE IN BETWEEN THE EXTERIOR SIDING AND THE GIRDERS ON THE NORTH AND WEST EXPOSURES

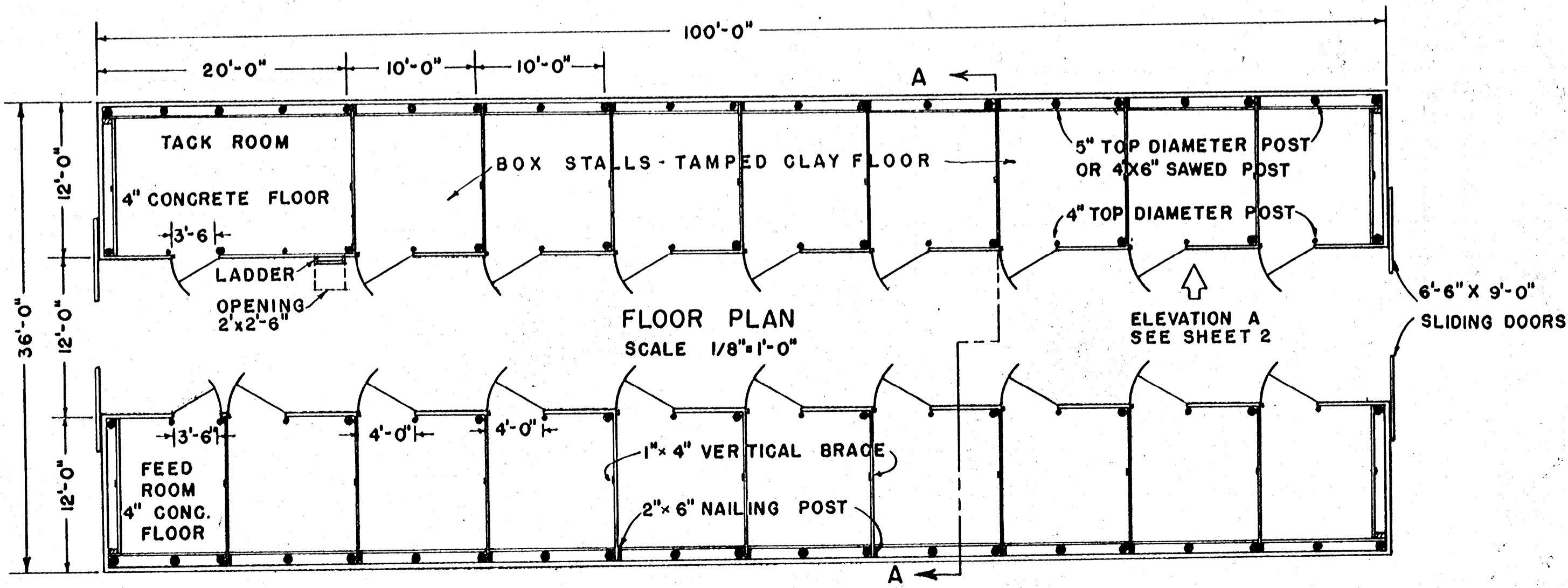


- NOTES:**
1. FLOOR LOAD NOT TO EXCEED 75 LBS. PER SQUARE FOOT
  2. USE BUILDING PAPER BETWEEN SUB-FLOOR AND FINISH FLOOR

**SECTION A-A**

SCALE 3/8"=1'-0"

NOTE: ALL POSTS TO BE PRESSURE-TREATED WITH PRESERVATIVE TO A RETENTION OF 8 POUNDS PER CUBIC FOOT.



**FLOOR PLAN**

SCALE 1/8"=1'-0"

ELEVATION A SEE SHEET 2

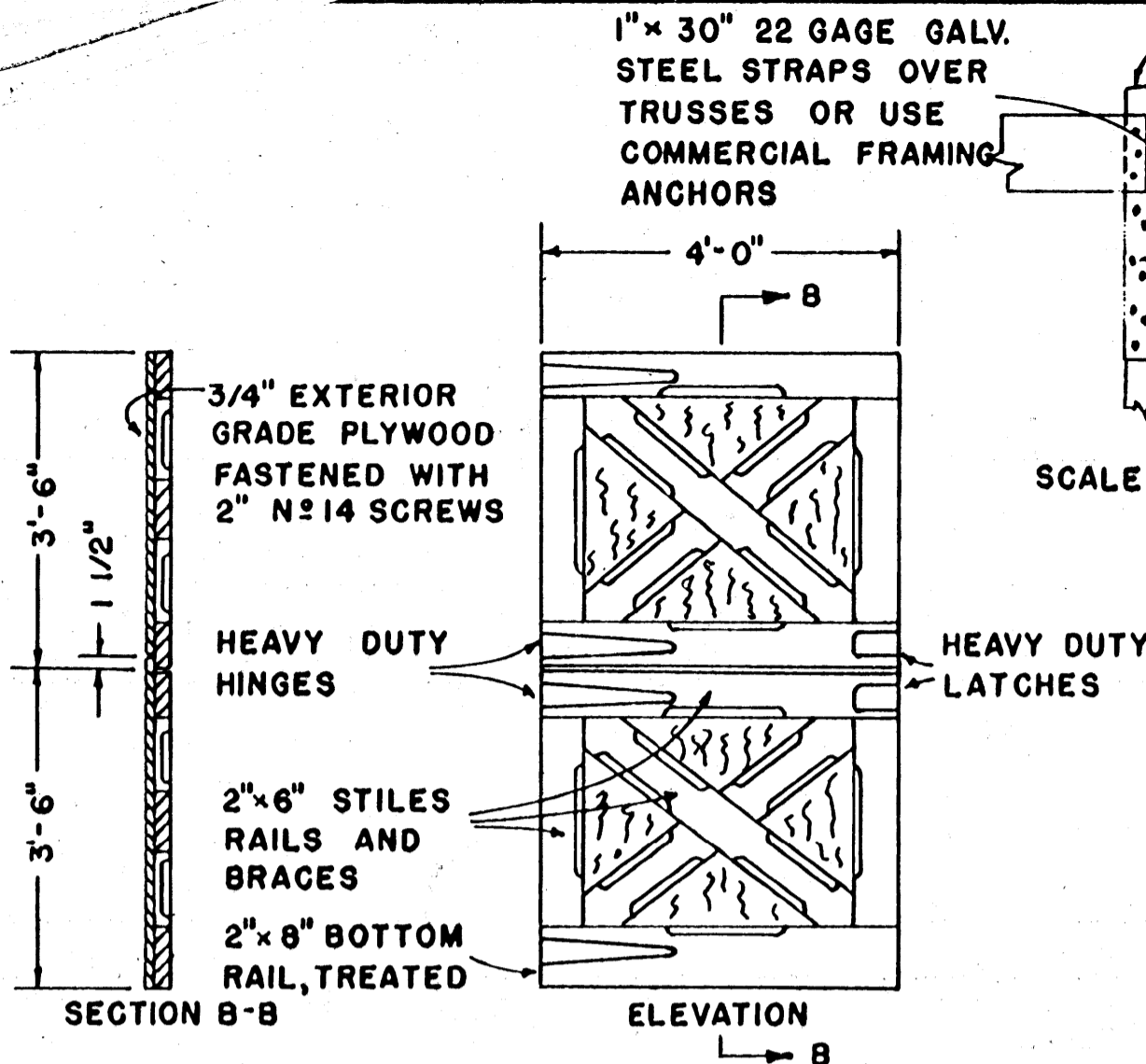
COOPERATIVE EXTENSION WORK IN  
 AGRICULTURE AND HOME ECONOMICS  
 STATE OF MISSISSIPPI  
 MISSISSIPPI STATE UNIVERSITY  
 AND  
 UNITED STATES DEPARTMENT OF AGRICULTURE COOPERATING

---

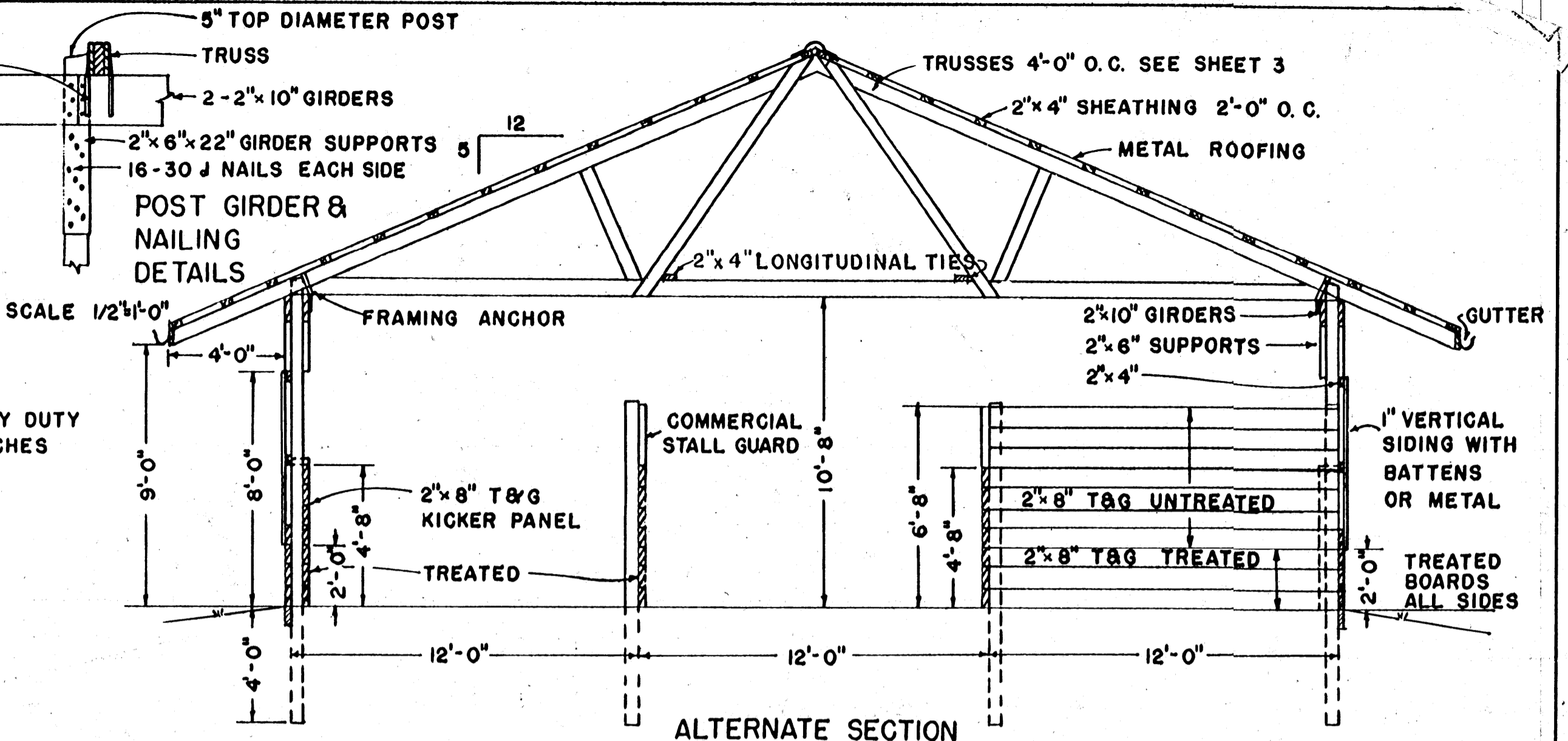
**HORSE BARN-17 STALL**

---

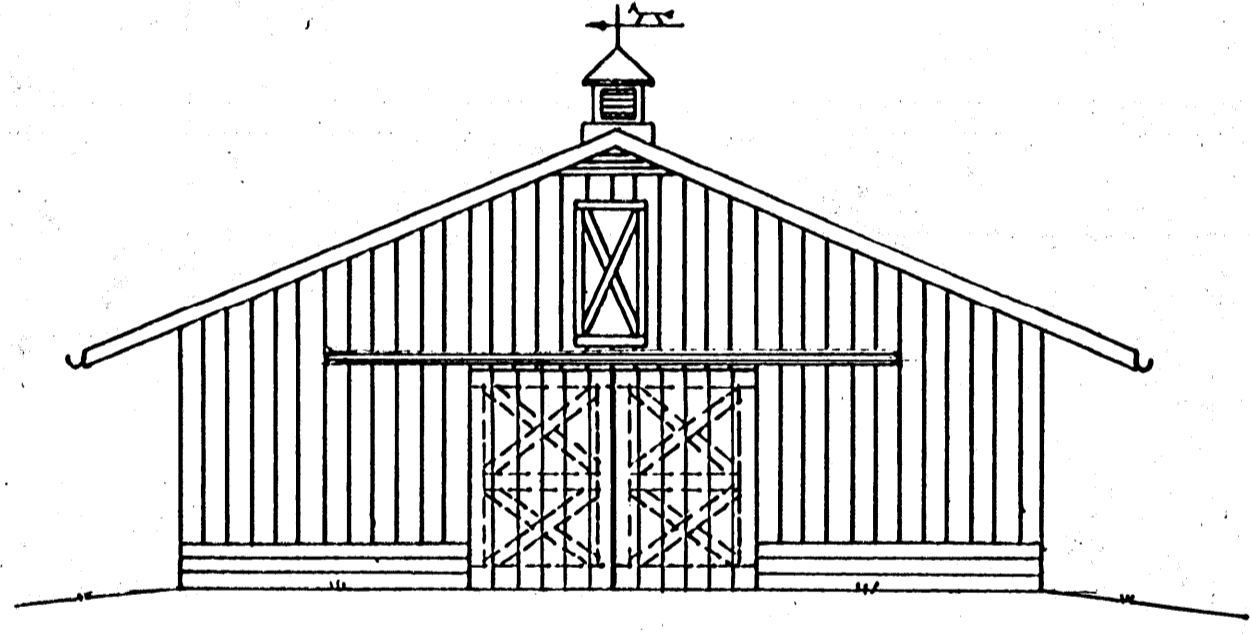
VA. '67 | EX. 6011 | SHEET 1 OF 3



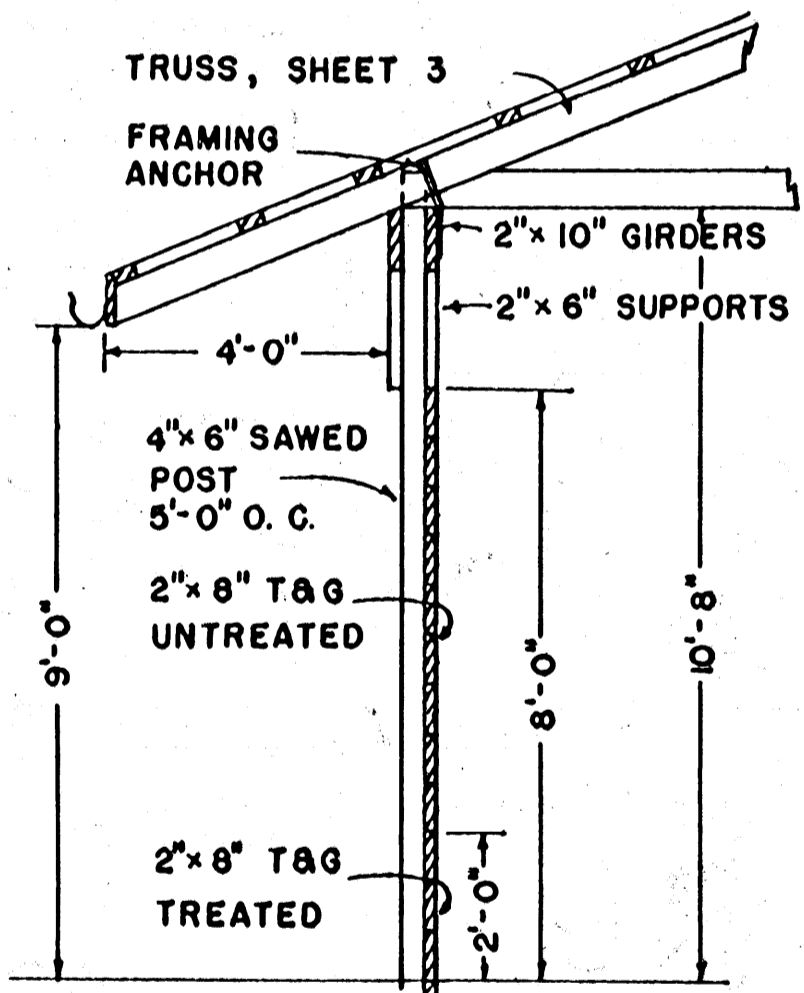
STALL DOOR DETAILS  
SCALE 1/2"=1'-0"



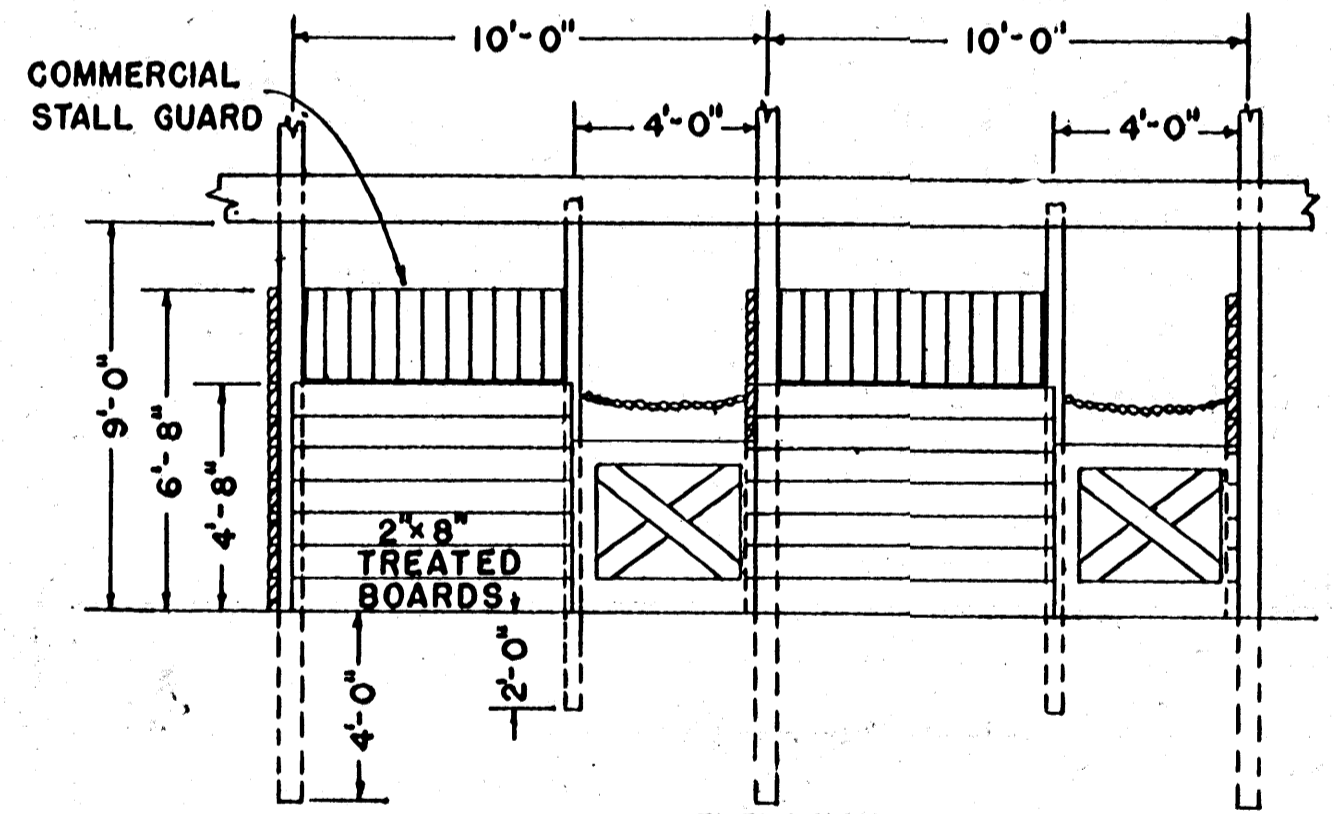
ALTERNATE SECTION  
A - A  
SCALE 1/4"=1'-0"



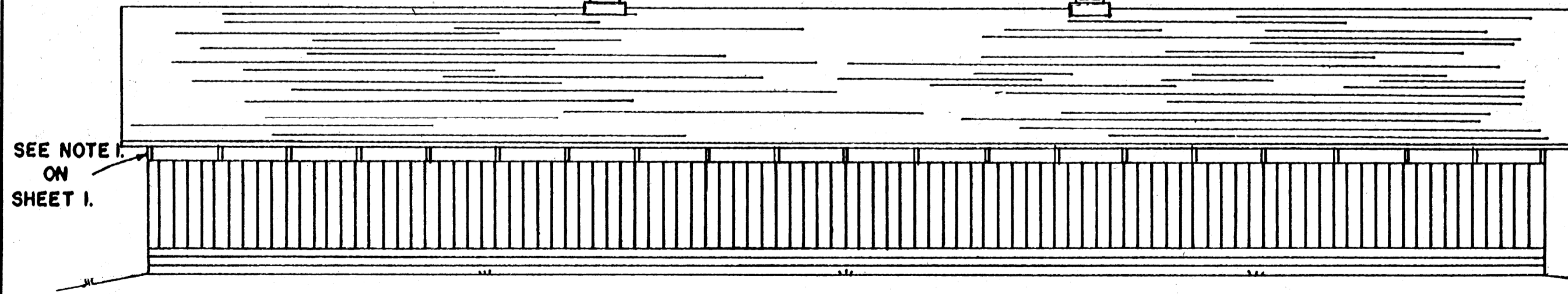
END ELEVATION  
SCALE 1/8"=1'-0"



ALTERNATE WALL DETAIL  
SCALE 3/8"=1'-0"



ELEVATION A  
STALL DETAIL  
SCALE 1/4"=1'-0"



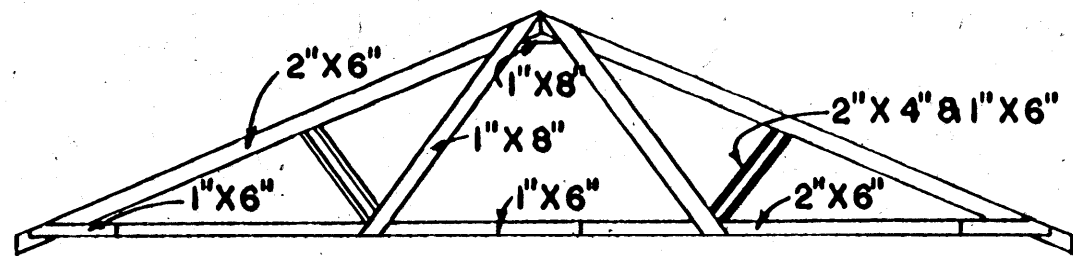
SIDE ELEVATION  
SCALE 1/8"=1'-0"

SEE NOTE ON SHEET 1.

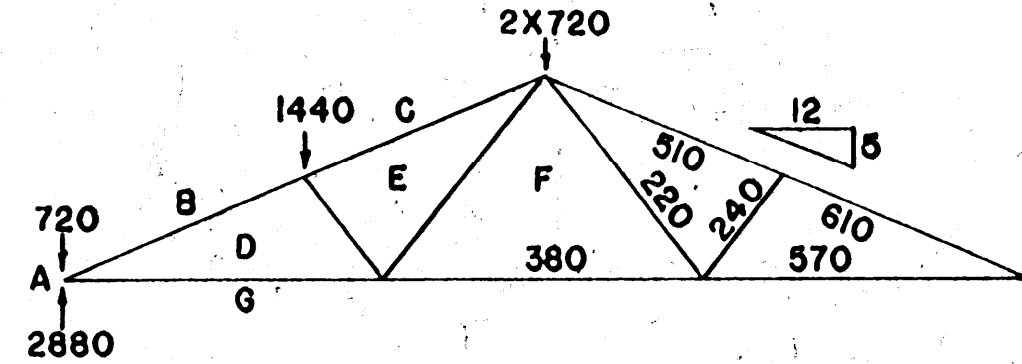
COOPERATIVE EXTENSION WORK IN  
AGRICULTURE AND HOME ECONOMICS  
STATE OF MISSISSIPPI  
MISSISSIPPI STATE UNIVERSITY  
AND  
UNITED STATES DEPARTMENT OF AGRICULTURE COOPERATING

HORSE BARN-17STALL  
VA. '67 EX. 6011 SHEET 2 OF 3

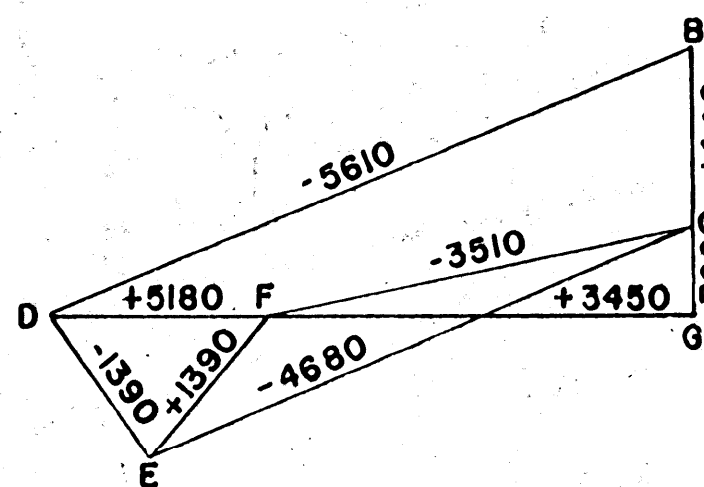
# 36-FT SPAN, 5 IN 12 PITCH, NAILED TRUSSED RAFTER (NO CEILING) SPACED 4 FT. ON CENTER



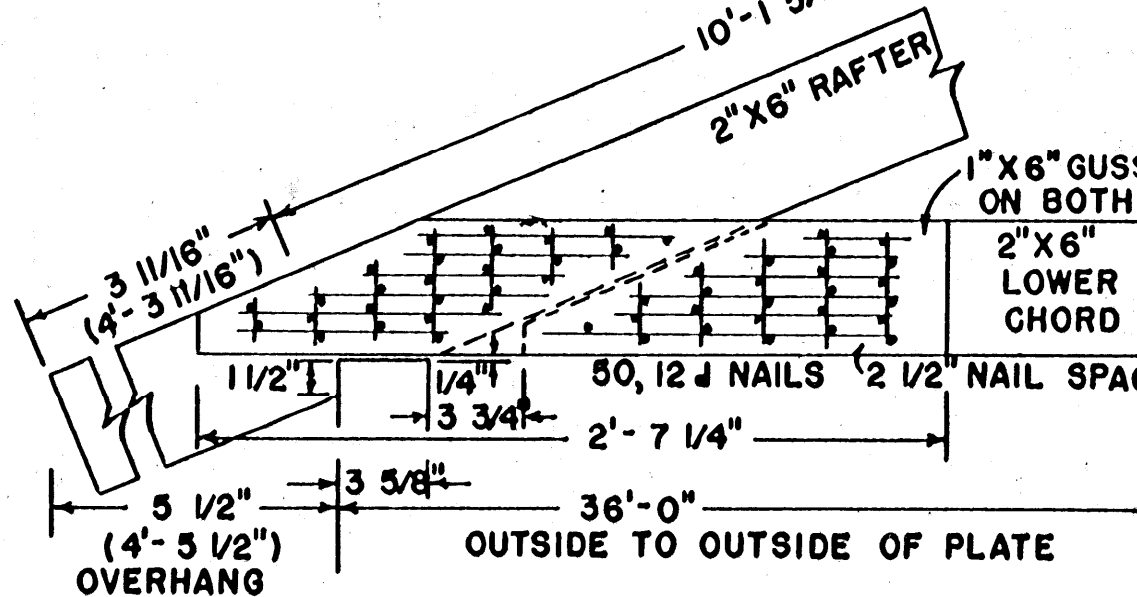
VIEW OF FRONT OF ASSEMBLY



LOAD AND STRESS DIAGRAMS

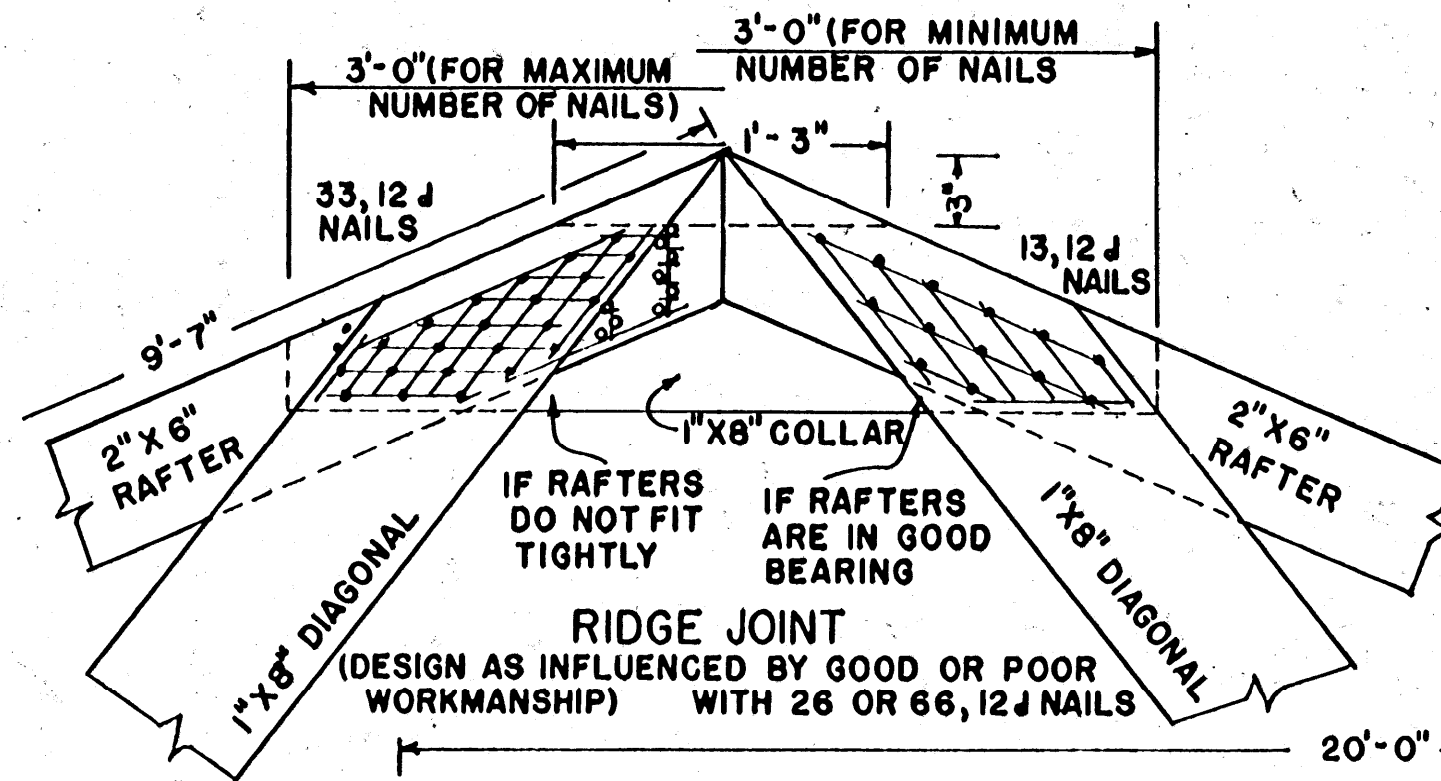


DEAD LOAD & LIVE LOAD ON ROOF: 40 LB/SQ. FT.  
 TRUSSED RAFTERS SPACED 4'-0" O.C.  
 LUMBER N#1 SOUTHERN PINE OR DOUGLAS FIR  
 C=135 PSI COMPRESSION PARALLEL TO GRAIN  
 F=1500 PSI MODULUS OF RUPTURE  
 E=1,760,000 PSI MODULUS OF ELASTICITY  
 CAMBER 5/8" AT CENTER SPLICE

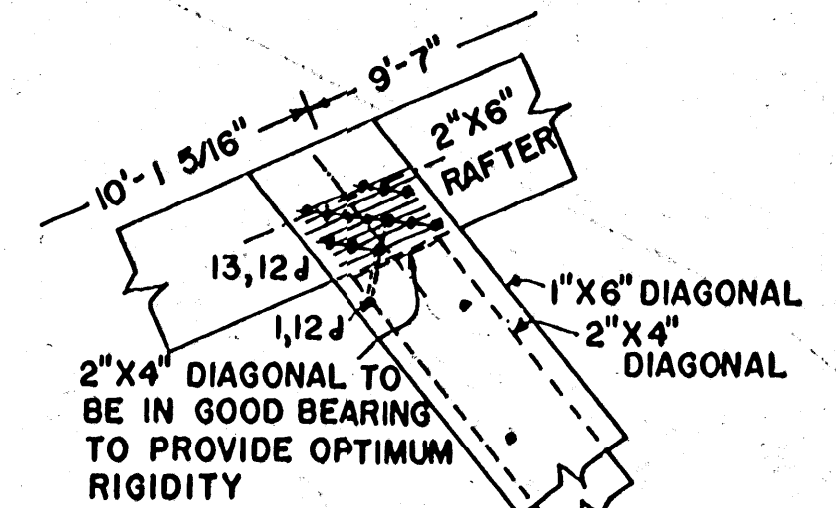


HEEL JOINT WITH 50, 12d NAILS

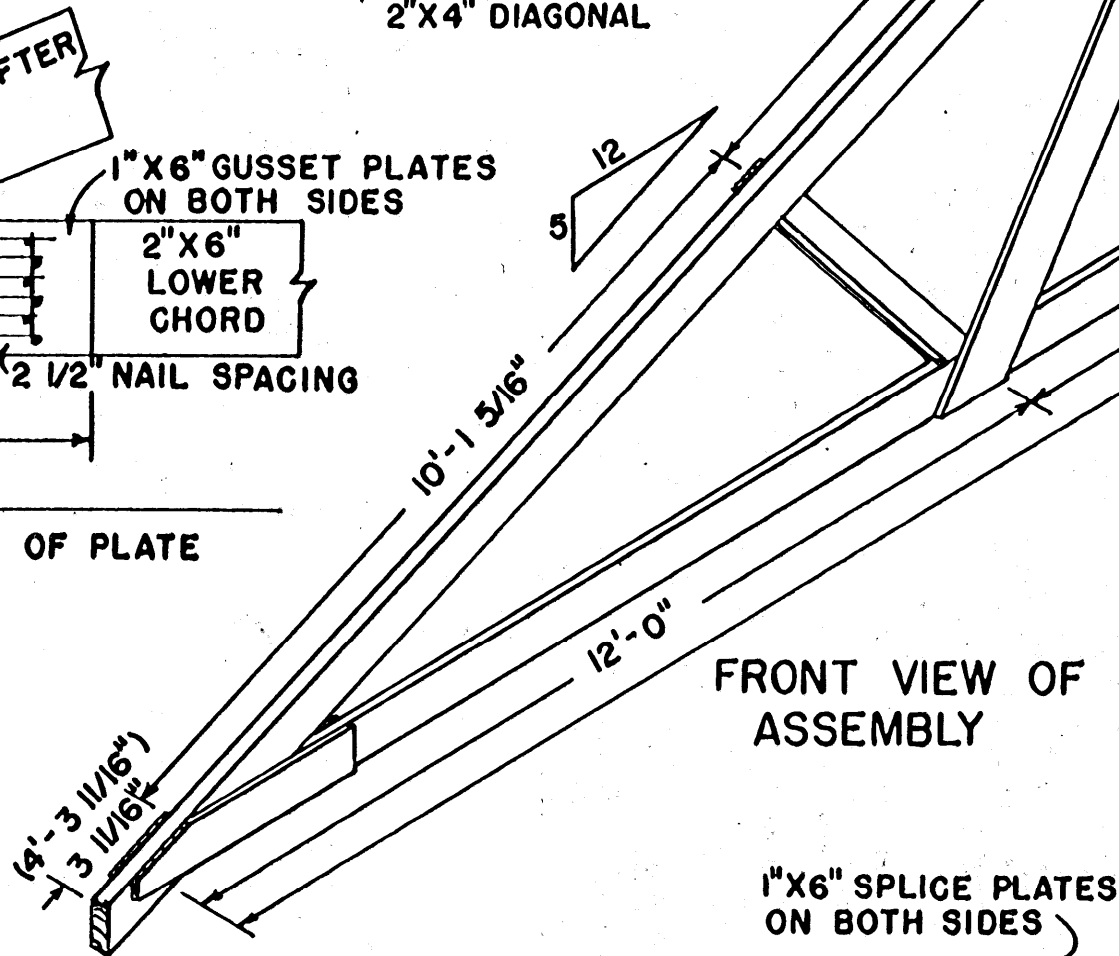
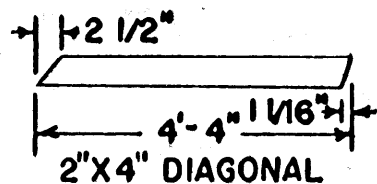
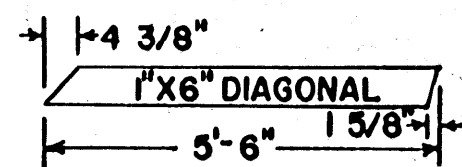
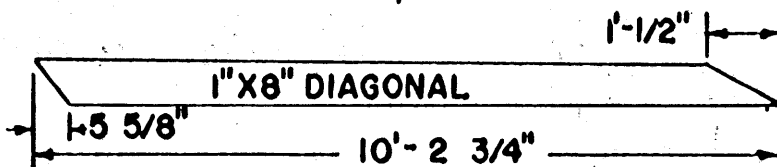
**NOTES:**  
 USE HELICALLY THREADED NAILS FOR PERMANENTLY TIGHT JOINTS THROUGHOUT STRUCTURE  
 USE HARDENED NAILS IN DRY SOUTHERN PINE  
 DRIVE ALL NAILS FROM FRONT EXCEPT THOSE SHOWN AS (O)  
 USE TEMPLATES FOR LOCATING ALL NAILS TO ASSURE MAXIMUM EFFICIENCY AND EFFECTIVENESS



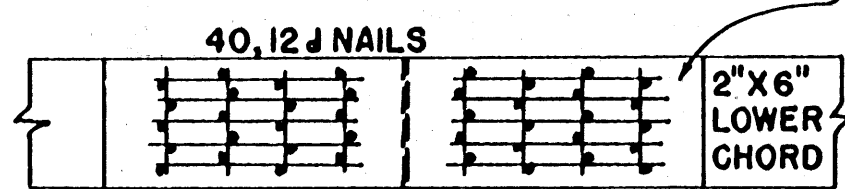
RIDGE JOINT (DESIGN AS INFLUENCED BY GOOD OR POOR WORKMANSHIP) WITH 26 OR 66, 12d NAILS



RAFTER-DIAGONAL JOINT WITH 14, 12d NAILS



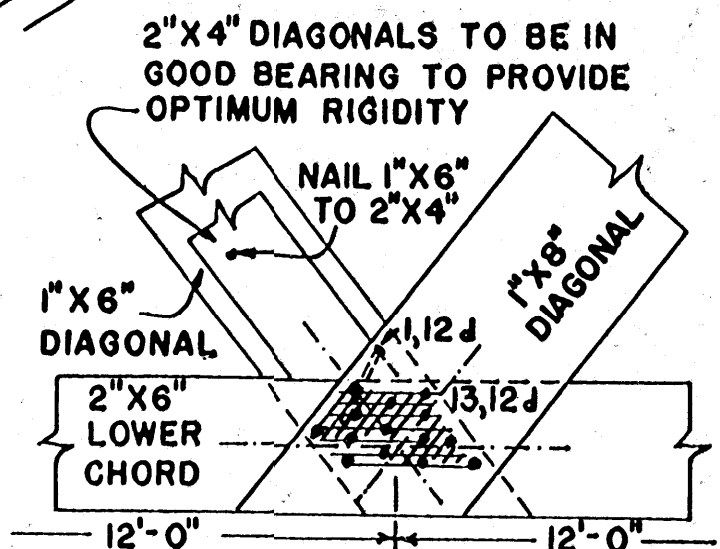
FRONT VIEW OF ASSEMBLY



CENTER-SPLICE JOINT WITH 40, 12d NAILS

## BILL OF MATERIALS

|             |              |                                        |
|-------------|--------------|----------------------------------------|
| RAFTERS     | 2 PCS.       | 2" X 6" X 20'-0" (24'-0")              |
| LOWER CHORD | 2 PCS.       | 2" X 6" X 17'-4 5/8"                   |
| DIAGONALS   | 2 PCS.       | 2" X 4" X 4'-4"                        |
|             | 2 PCS.       | 1" X 6" X 5'-6"                        |
|             | 2 PCS.       | 1" X 8" X 10'-2 3/4"                   |
| SPLICES     | 2 PCS.       | 1" X 6" X 2'-1"                        |
| GUSSETS     | 4 PCS.       | 1" X 6" X 2'-7 1/4"                    |
|             | 1 PC.        | 1" X 8" X 3'-0"                        |
| NAILS       | 230-270 PCS. | 12d BRIGHT 3 1/4" X 0.148" (44 LBS.)   |
|             | OR           |                                        |
| NAILS       | 230-270 PCS. | 12d HARDENED 3 1/4" X 0.135" (37 LBS.) |



CHORD-DIAGONAL JOINT WITH 14, 12d NAILS

COOPERATIVE EXTENSION WORK IN AGRICULTURE AND HOME ECONOMICS  
 STATE OF MISSISSIPPI  
 MISSISSIPPI STATE UNIVERSITY  
 AND  
 UNITED STATES DEPARTMENT OF AGRICULTURE COOPERATING

**HORSE BARN-17 STALL**

VA. '67 EX. 6011 SHEET 3 OF 3