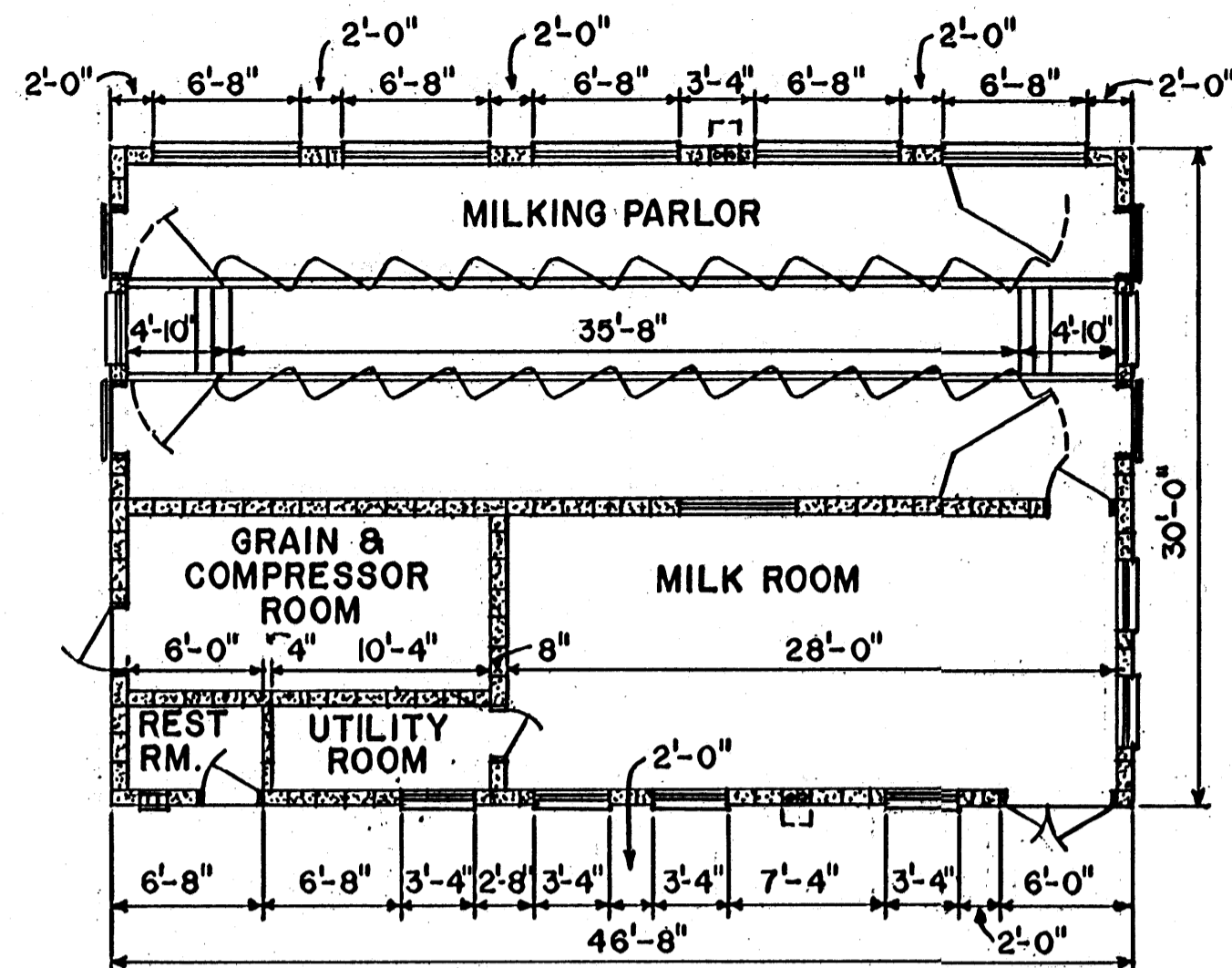
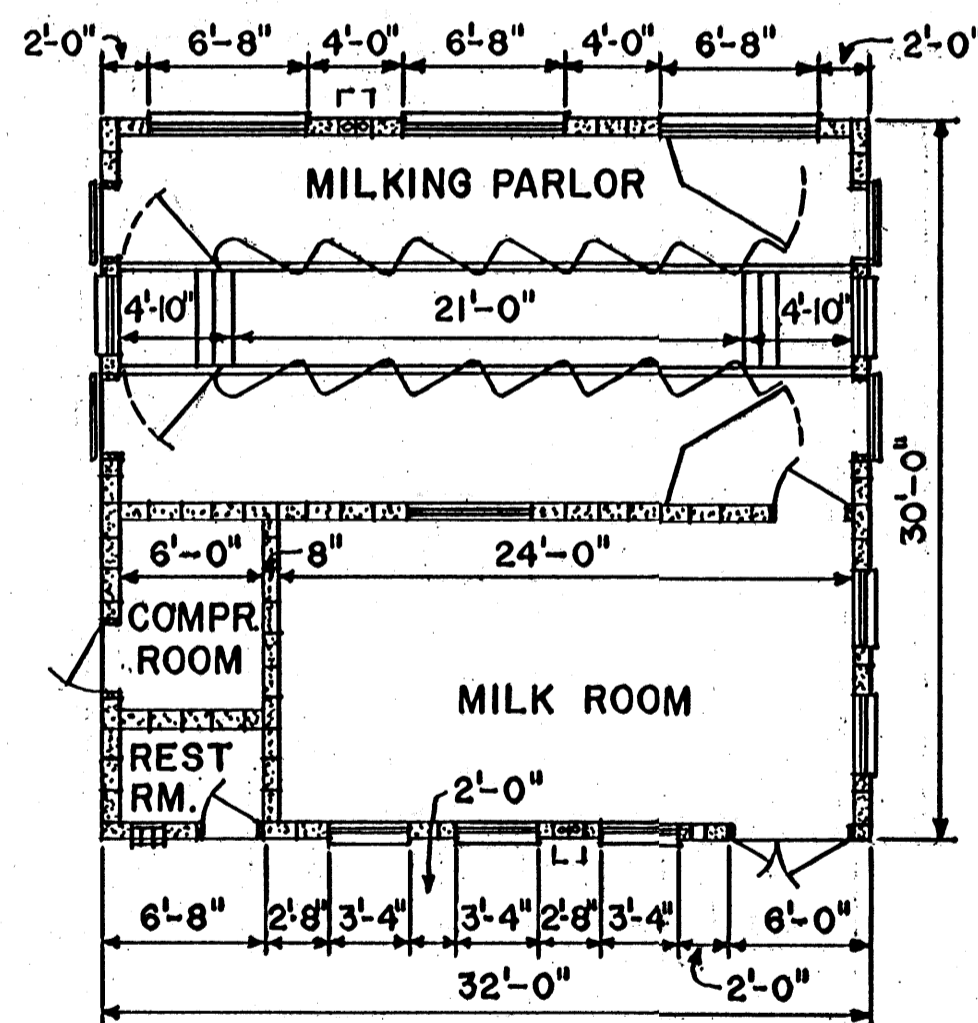


PERSPECTIVE



DOUBLE 10 STALL

SCALE: 1/8" = 1'-0"



DOUBLE 6 STALL

SCALE: 1/8" = 1'-0"

MENTION OF A TRADE NAME DOES NOT CONSTITUTE A GUARANTEE OR WARRANTY OF THE PRODUCT BY THE U.S. DEPARTMENT OF AGRICULTURE OR AN ENDORSEMENT BY THE DEPARTMENT OVER OTHER PRODUCTS NOT MENTIONED.

NOTE: CHECK WITH MILK SANITARIAN AND EQUIPMENT MANUFACTURER BEFORE STARTING CONSTRUCTION.

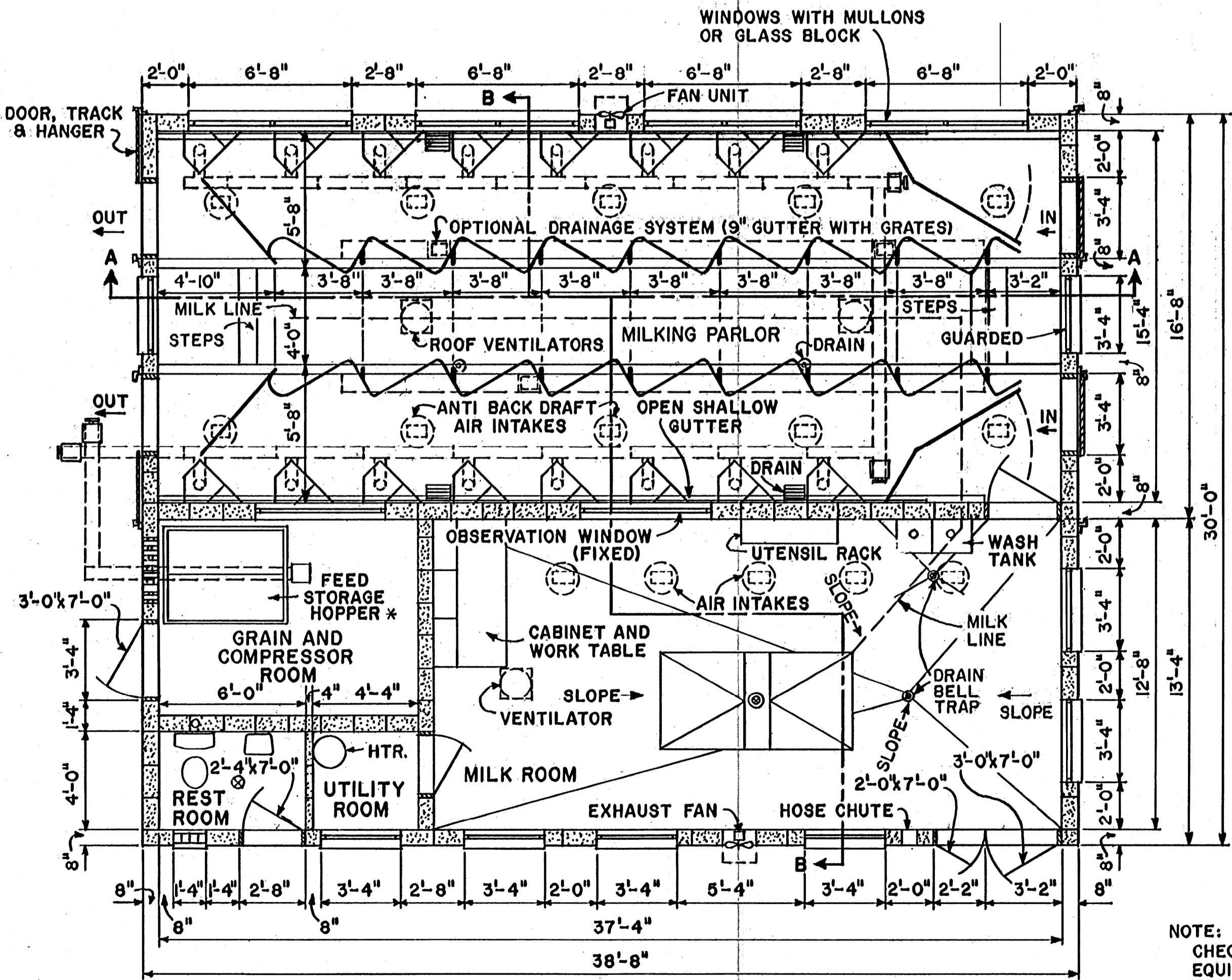
COOPERATIVE EXTENSION WORK IN AGRICULTURE AND HOME ECONOMICS

STATE OF MISSISSIPPI
MISSISSIPPI STATE UNIVERSITY
UNITED STATES DEPARTMENT OF AGRICULTURE COOPERATING

MILK HOUSE FOR DAIRY COWS

TEXAS '71 6132 SHEET 1 OF 2

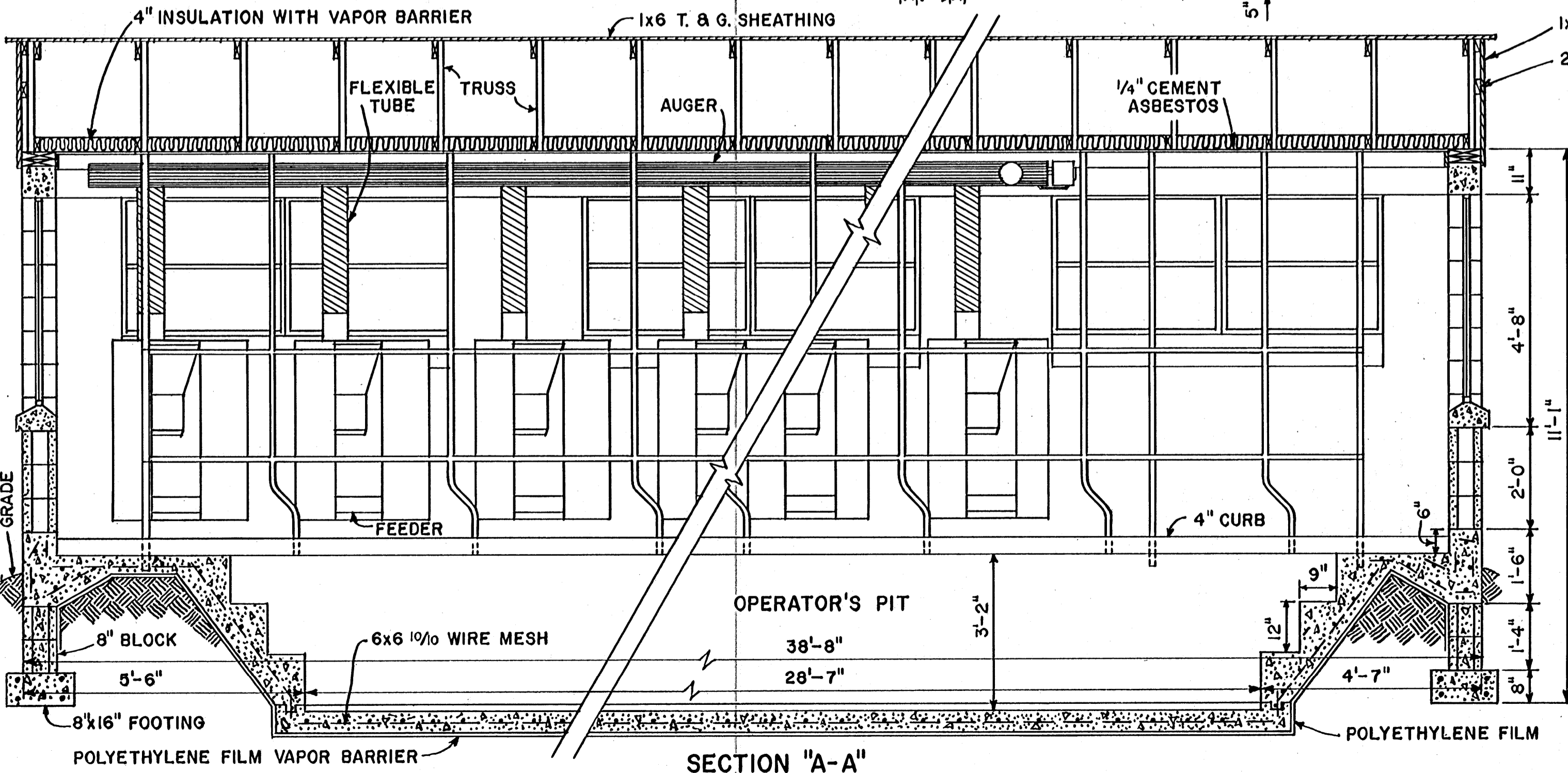
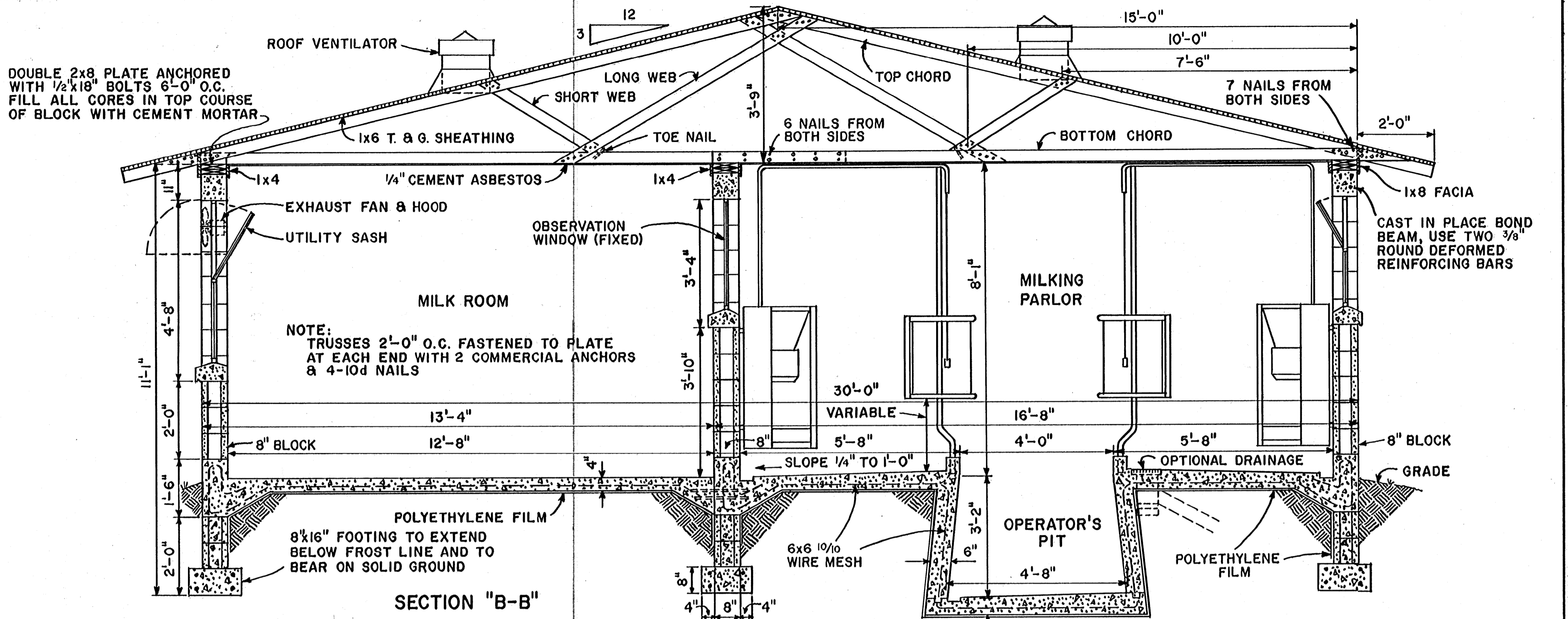
WINDOWS WITH MULLONS OR GLASS BLOCK



FLOOR PLAN
SCALE: 1/4" = 1'-0"

NOTE: ALL SLOPES 1/4" TO 1'-0"

* NOTE: OPTIONAL OUTSIDE STORAGE WHERE REQUIRED OR DENIED



TRUSS DETAILS

TRUSS DESIGNED TO SUPPORT LOADS UP TO 70 LBS. PER FOOT OF SPAN INCLUDING WEIGHT OF ROOF.

ALL LUMBER SHALL BE STRESS GRADED TO PROVIDE 1500 LBS. PSI FIBER STRESS IN BENDING AND 1350 LBS. PSI COMPRESSION.

MATERIALS FOR ONE TRUSS:

- TOP CHORD 2 PCS. 2x4x18'-0"
- BOTTOM CHORD 2 PCS. 2x4x18'-0"
- LONG WEBS 2 PCS. 2x4x8'-0"
- SHORT WEBS 1 PC. 2x4x7'-0" (CUT FROM 14'-0" LENGTH)
- NAILS 2 1/2 LBS. 20d HARDENED HELICALLY THREADED.

ALL PROJECTING NAILS ARE TO BE CLINCHED.

SCALE: 1/2" = 1'-0" UNLESS OTHERWISE NOTED

COOPERATIVE EXTENSION WORK IN AGRICULTURE AND HOME ECONOMICS
STATE OF MISSISSIPPI
MISSISSIPPI STATE UNIVERSITY
AND
UNITED STATES DEPARTMENT OF AGRICULTURE COOPERATING

MILK HOUSE FOR DAIRY COWS

TEXAS '71	6132	SHEET 2 OF 2
-----------	------	--------------