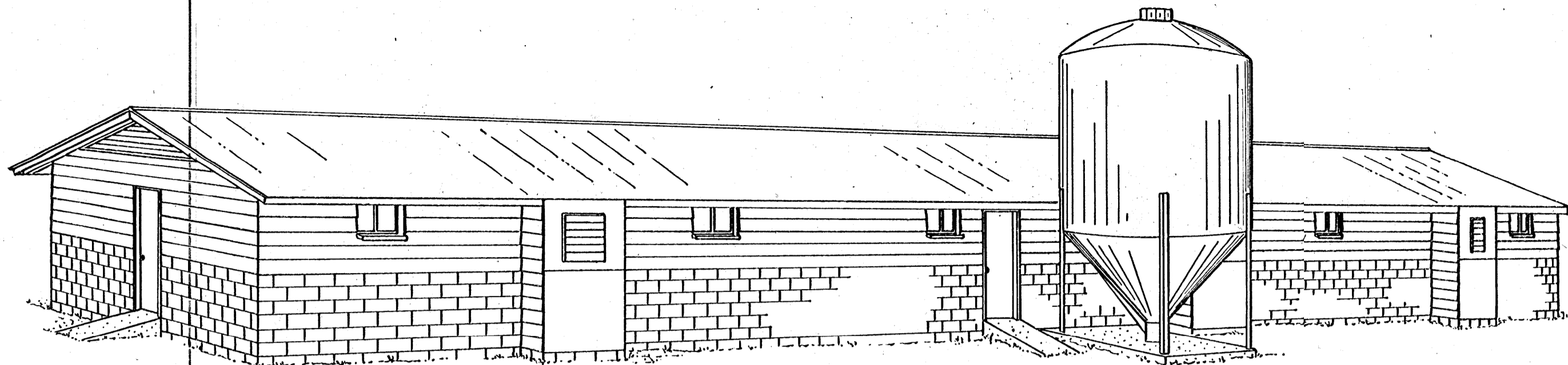
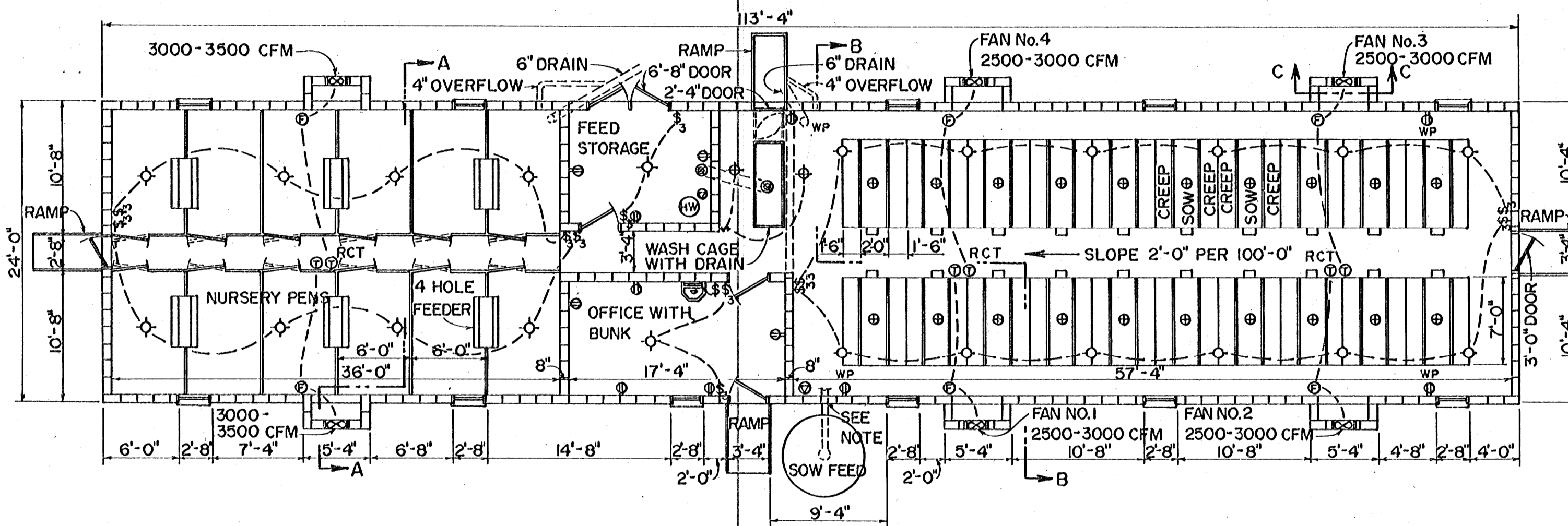


- SYMBOLS**
- ⊕ SCREW-LOCK DUPLEX OUTLET, TWO 250 WATT HEAT LAMPS.
 - ⊙ 100 WATT INCANDESCENT LAMP OUTLET
 - ⊕ 250 WATT FLOOD LAMP
 - ⊕ DUPLEX RECEPTACLE GROUNDED (w.p. WATER PROOF)
 - ⊕ FUSED MOTOR STARTER
 - ⊕ SINGLE-POLE SWITCH
 - ⊕ SINGLE-POLE DOUBLE-THROW SWITCH
 - ⊕ 220 VOLT RECEPTACLE
 - ⊕ FLUORESCENT LAMP



PERSPECTIVE

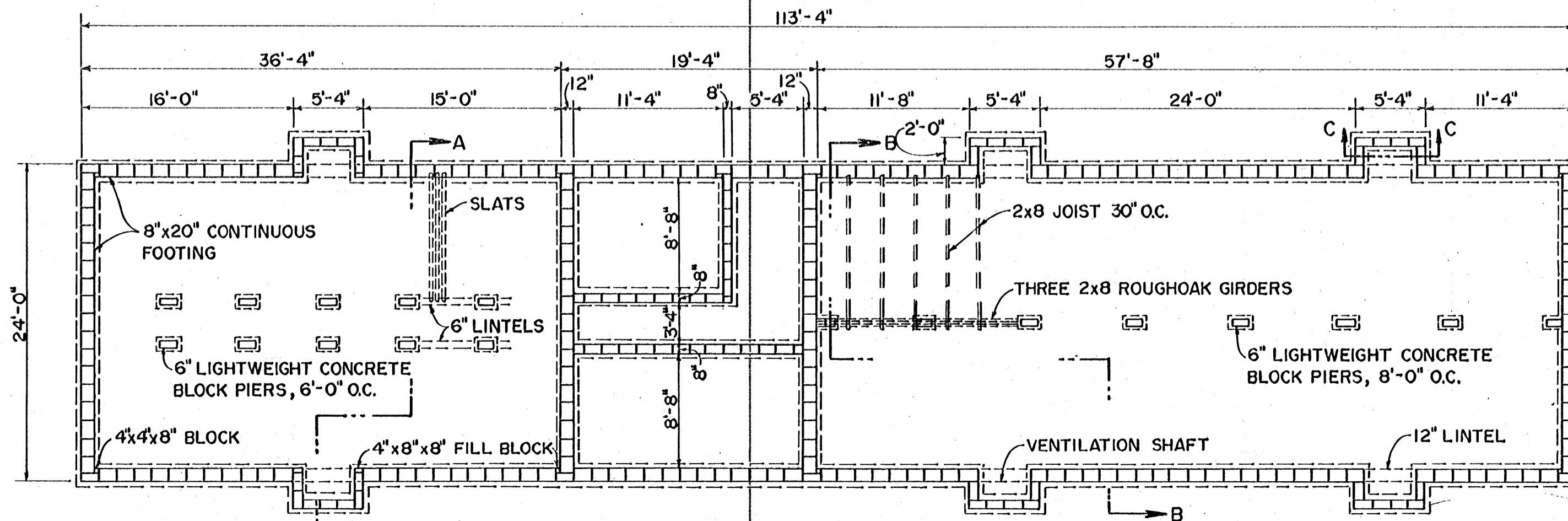


FLOOR PLAN

VENTILATION

- ⊕ THERMOSTAT
- RCT RELAY CYCLE TIMER
SET TO RUN 2 TO 4 MIN.
OUT OF TEN. SET THE
THERMOSTAT ON THIS
FAN TO OPERATE FIRST.

NOTE: 8"x16" HOLE 6'-0" ABOVE FOUNDATION FOR AUGER.
NURSERY HOLDS ONE GROUP OF PIGS FROM FARROWING HOUSE PLUS TWO EXTRA PENS FOR SLOW GAINING PIGS.



FOUNDATION PLAN

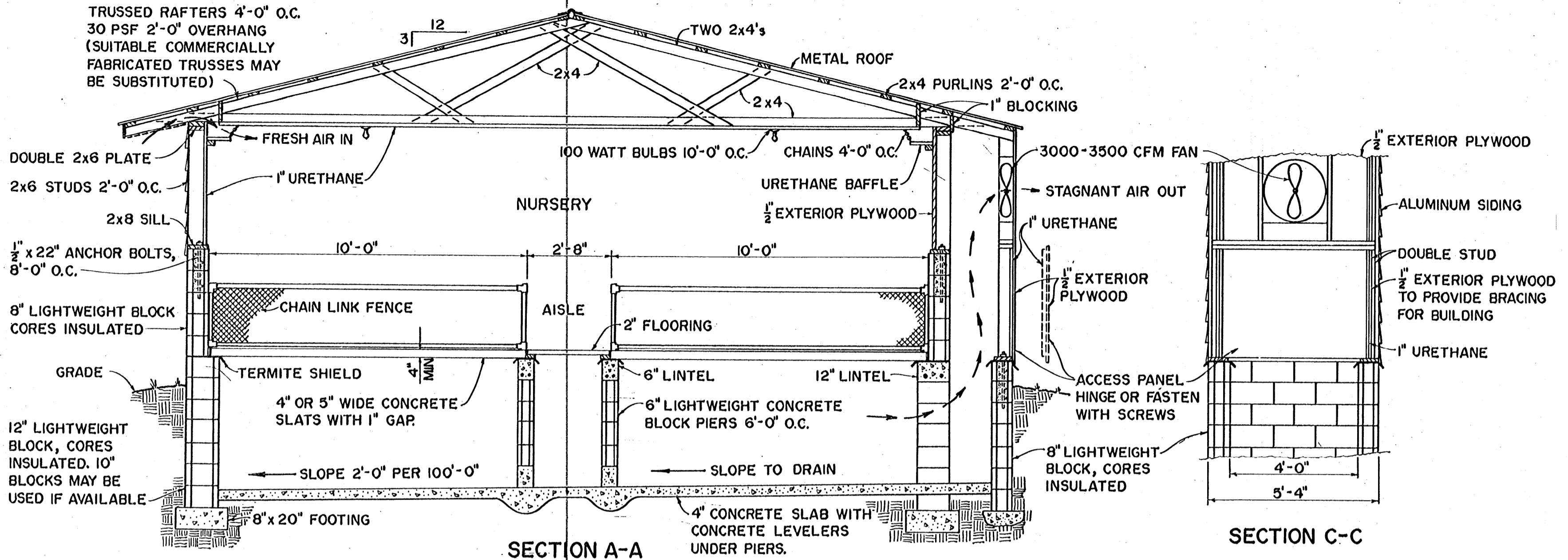
BASED ON: VPI PLAN G-1.25

SCALE: 1/8" = 1'-0" UNLESS OTHERWISE NOTED

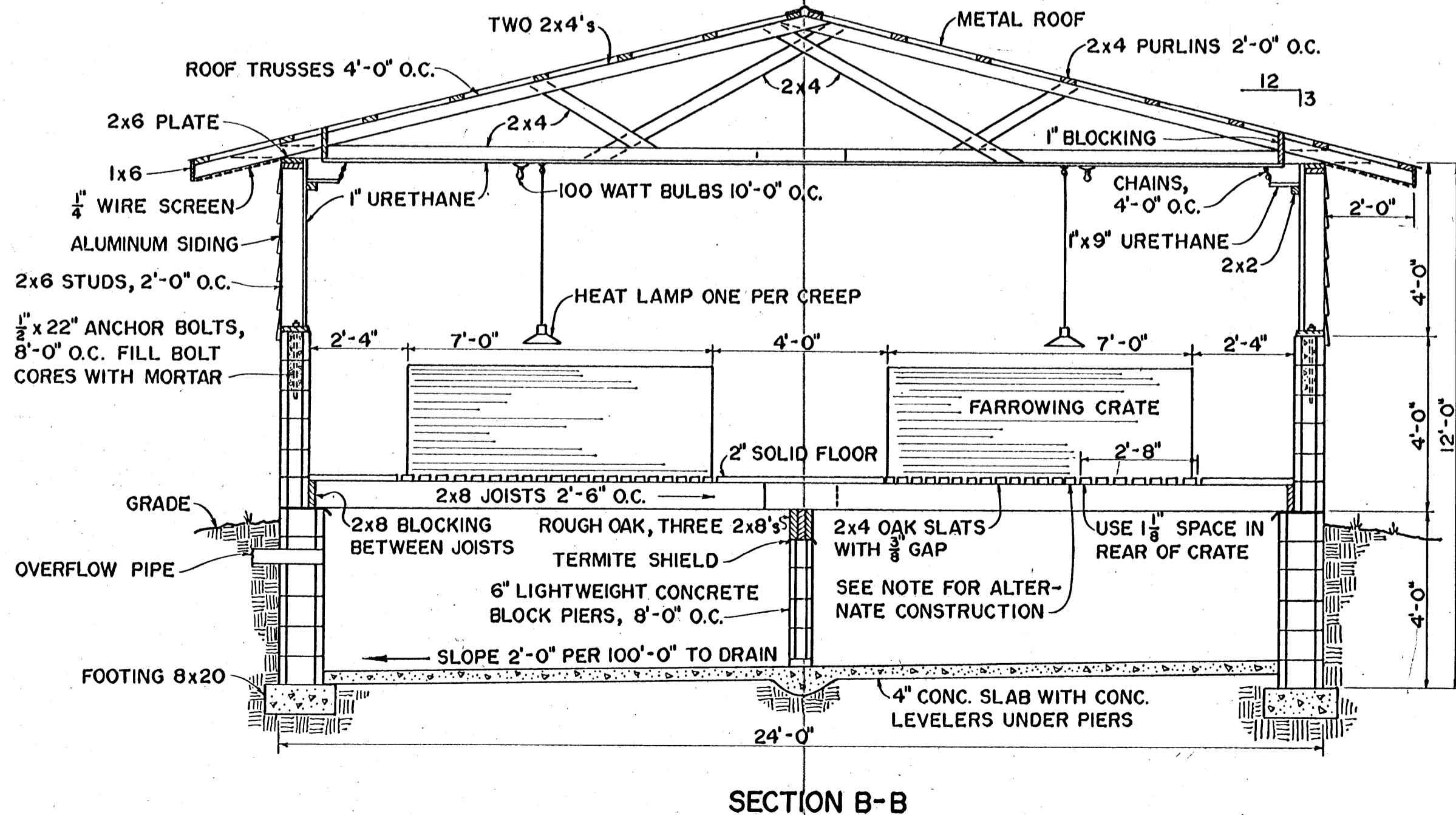
COOPERATIVE EXTENSION WORK IN
AGRICULTURE AND HOME ECONOMICS
STATE OF MISSISSIPPI
MISSISSIPPI STATE UNIVERSITY
AND
UNITED STATES DEPARTMENT OF AGRICULTURE COOPERATING

**FARROWING AND NURSERY
BUILDING FOR SWINE**

VA. '72 EX. 6135 SHEET 1 OF 2



NOTE: IF WOOD SLATS ARE USED THEY ARE
TO BE OF UNTREATED, PLANED OAK.



NOTE: ALTERNATE SLAT CONSTRUCTION,
1" EPOXY COATED SLATS 3/8" THICK
WITH A 3/8" GAP BETWEEN SLATS. USE
AN 18" SECTION IN FRONT OF STALL
AND 36" SECTION AT REAR.

SCALE: 3/8" = 1'-0" UNLESS OTHERWISE NOTED

COOPERATIVE EXTENSION WORK IN AGRICULTURE AND HOME ECONOMICS		
STATE OF MISSISSIPPI		
MISSISSIPPI STATE UNIVERSITY		
AND UNITED STATES DEPARTMENT OF AGRICULTURE COOPERATING		
FARROWING AND NURSERY BUILDING FOR SWINE		
VA. '72	EX. 6135	SHEET 2 OF 2