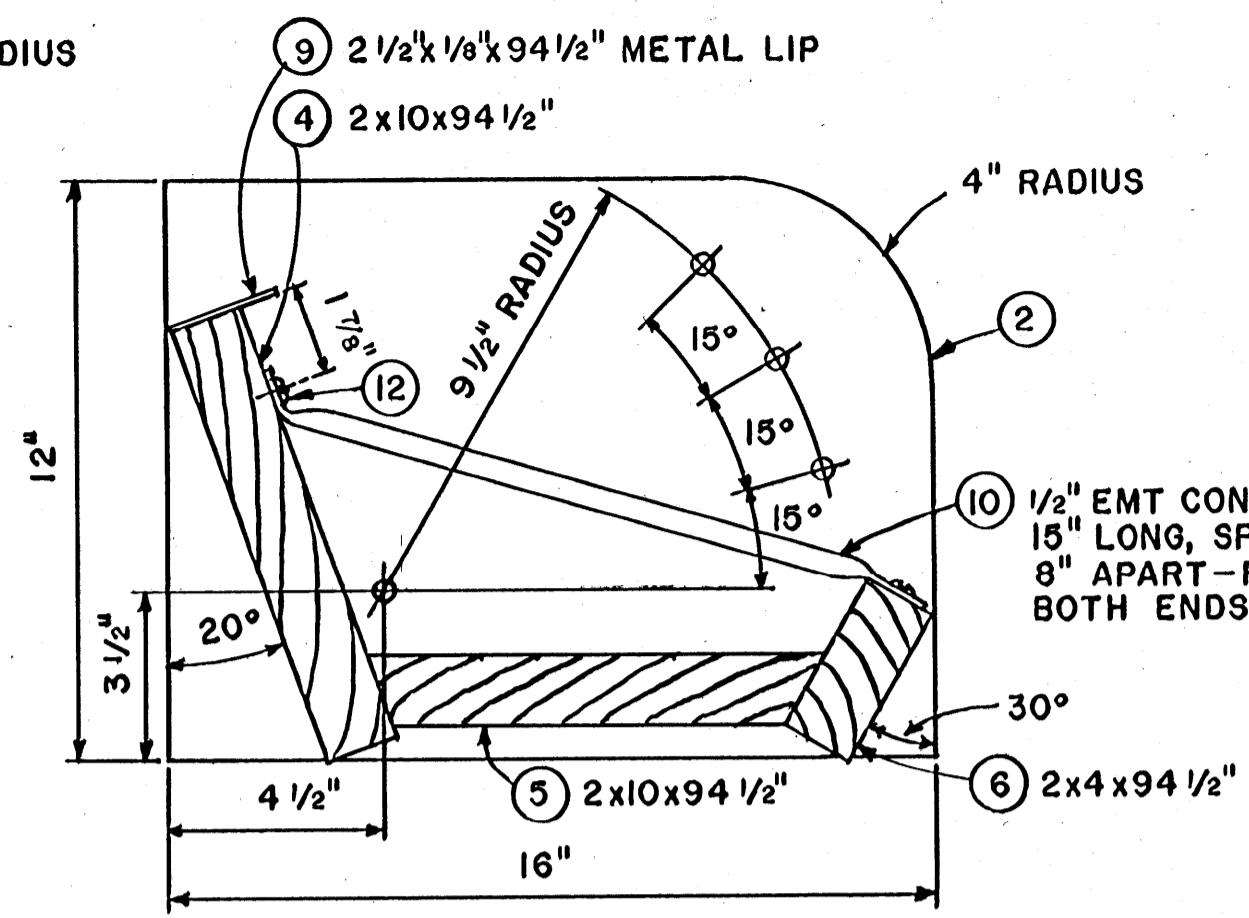


**FEEDER END**  
SCALE: 3"=1'-0"

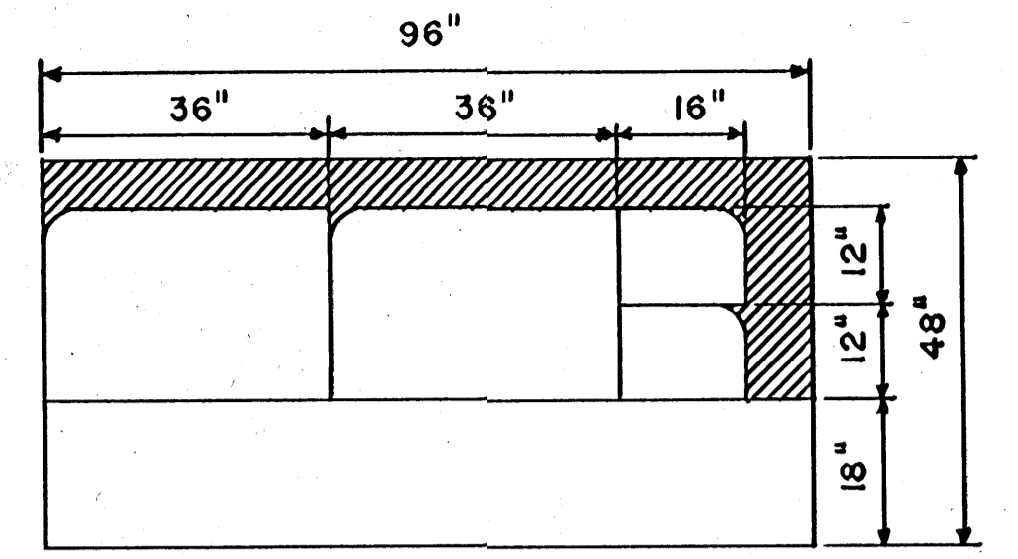
**BILL OF MATERIAL**

NO.	NAME	MAT.	QN.	STOCK LIST & NOTES
1	FEEDER END	WOOD	2	CUT FROM 4'-0" x 8'-0"
2	TROUGH END	"	2	SHEET, 3/4" B-C EXT-
3	STEP PANEL	"	1	DFPA PLYWOOD
4	TROUGH BACK	"	1	2x10 DF } 16'-0" REQ'D
5	TROUGH BOTTOM	"	1	2x10 DF }
6	TROUGH FRONT	"	1	2x4 DF }
7	BRACE	"	1	2x4 DF } 27'-0" REQ'D
8	STEP	"	1	2x4 DF }
9	LIP	STEEL	1	2 1/2 x 1/8 x 8'-0" LONG FLAT STOCK
10	SEPARATORS	ALUM.	11	14'-0" 1/2" EMT CONDUIT
11	LEGS	STEEL	4	2 1/2 x 1/8 x 9'-0" LONG ANGLE IRON
12	#10x1" RD. HD. WOOD SCR.		22	
	3/8" SQ. HD. BOLTS		21	8-1 1/2", 4-2", 4-3", 5-5"
	3/8" SQ. HD. NUTS		21	
	3/8" MED. FLAT WASHERS		34	

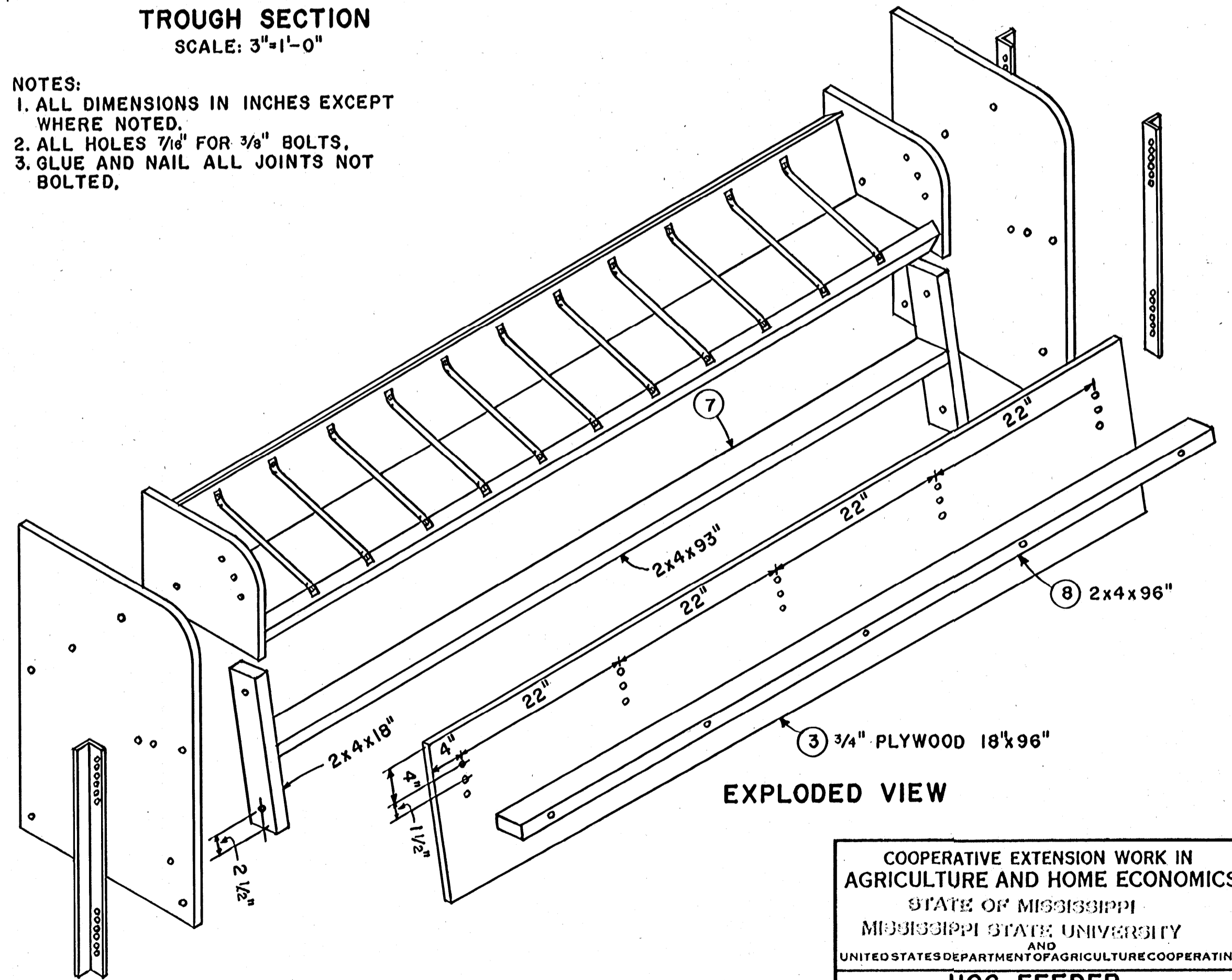


**TROUGH SECTION**  
SCALE: 3"=1'-0"

- NOTES:  
 1. ALL DIMENSIONS IN INCHES EXCEPT WHERE NOTED.  
 2. ALL HOLES 7/16" FOR 3/8" BOLTS.  
 3. GLUE AND NAIL ALL JOINTS NOT BOLTED.



**PLYWOOD CUTTING DIAGRAM**  
SCALE: 1/2"=1'-0"



**EXPLODED VIEW**

COOPERATIVE EXTENSION WORK IN  
 AGRICULTURE AND HOME ECONOMICS  
 STATE OF MISSISSIPPI  
 MISSISSIPPI STATE UNIVERSITY  
 AND  
 UNITED STATES DEPARTMENT OF AGRICULTURE COOPERATING

**HOG FEEDER**  
**STAND-UP TYPE**

CALIF. '72 **6144** SHEET 1 OF 1