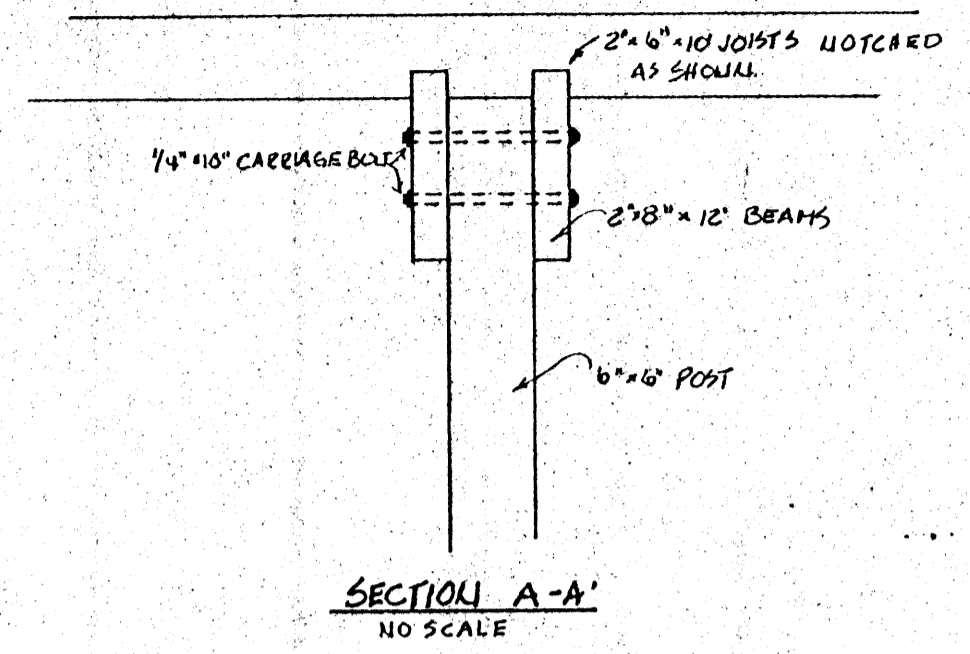
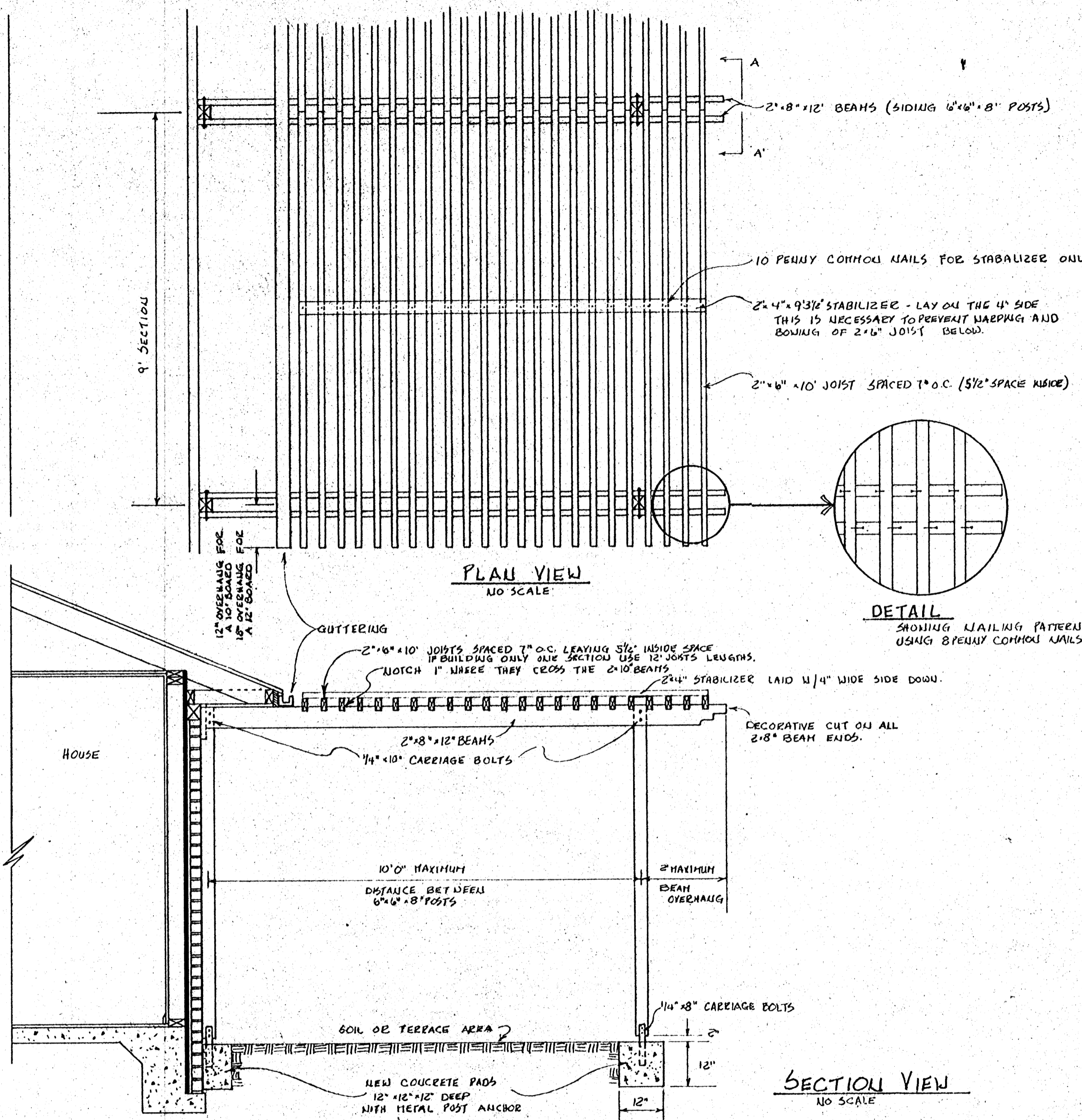
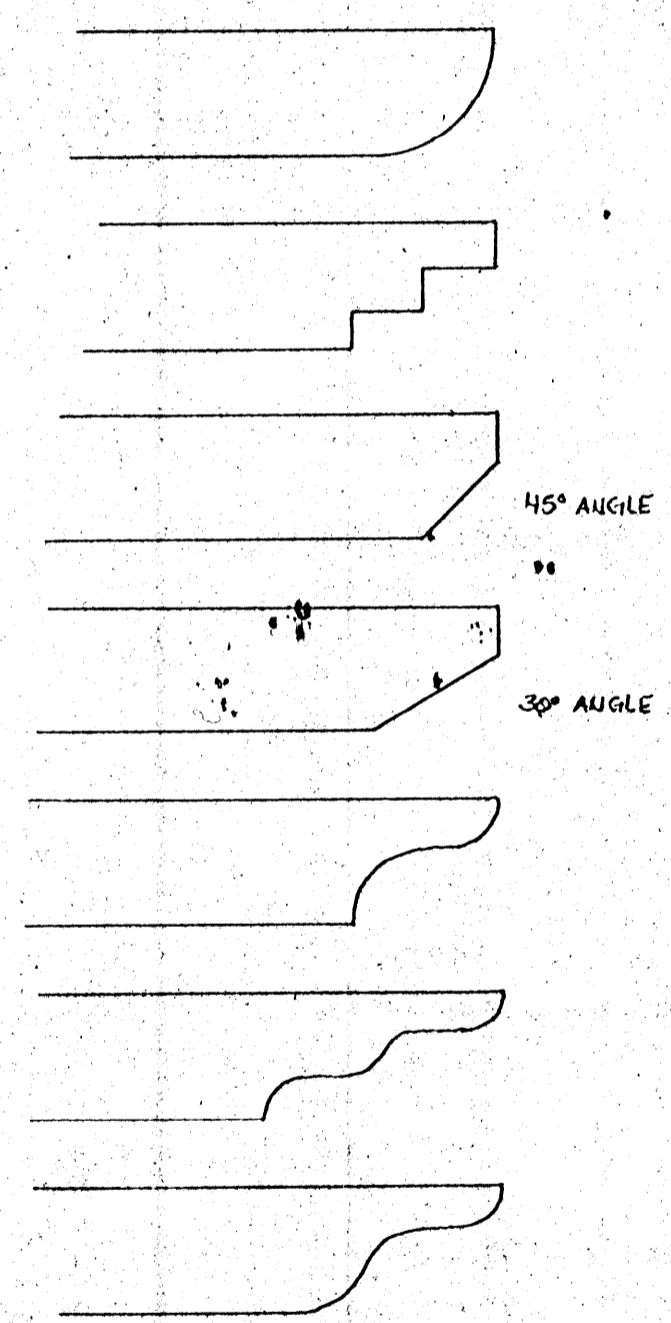


NOTE:
FOR A FREE STANDING ARBOE (ONE NOT ATTACHED TO HOUSE),
POST SPACING SHOULD BE 9'x9' MAXIMUM.



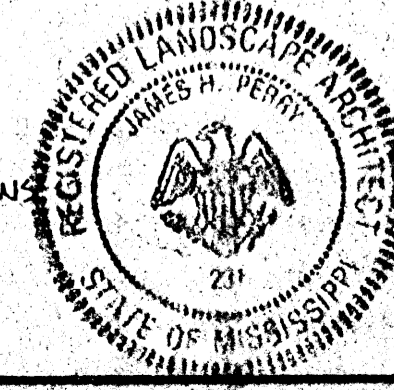
DECORATIVE CUT IDEAS
SCALE: 1"=1'0"



MATERIALS LIST FOR A 9' SECTION

WOOD		HARDWARE	
QTY	DESCRIPTION	QTY	DESCRIPTION
4	6x6x8 POST	8	1/4x8" CARRIAGE BOLTS
4	2x8x12 BEAMS	8	1/4x10" CARRIAGE BOLTS
* 16	2x6x12 JOISTS	4	METAL POST STRAP ANCHOR
1	2x4x9 3/4 STABILIZER CUT FROM 10' BOARD	64	8 PENNY COMMON NAIL
		16	10 PENNY COMMON NAIL
CONCRETE			
QTY	DESCRIPTION		
4	SACK CONCRETE MIX		

NOTES:
ALL WOOD IS PRESSURE TREATED #2 PINE OR BETTER.
ALL HARDWARE SHOULD BE GALVANIZED.
* WHEN BUILDING (1) 9' SECTION JOIST SIZE WILL BE 2"x6"x12"; WHEN BUILDING 2 OR MORE 10' SECTION JOIST SIZE WILL BE 2"x6"x10".



NOTE:
TO REDUCE DIRECT SUNLIGHT AT MID-DAY USE A DECIDUOUS VINE (DROPS LEAVES IN WINTER) ON TOP.

CONSTRUCTION NOTES	PL. NO. 8219
A WOODEN ARBOE FOR SHADING A WESTERN EXPOSURE	
DESIGN BY J. PERRY	SHEET 1
DRAWN BY D. FILES	OF 1
DATE 9/1982	