

Using Google Earth to Estimate Shoreline Erosion History

When evaluating a shoreline for possible implementation of a living shoreline project, one of the most important site characteristics to assess is the erosion history of the site. An easy and free way to do this is to use Google Earth and Microsoft PowerPoint.

Using these tools, you should be able to quickly determine if a site has been experiencing erosion or if it is relatively stable. You may also be able to determine the cause of erosion at a site using this activity alone or in combination with property owner interviews.

This guide serves as a step-by-step tutorial to help anyone to be able to do shoreline erosion assessments using this common software. However, this is a rough evaluation of erosion at a site. It should not be used to measure exact erosion rates or amount of land lost.

Erosion history can indicate:

- Suitability for living shoreline implementation
- The need for wave-breaking structures

Programs Needed

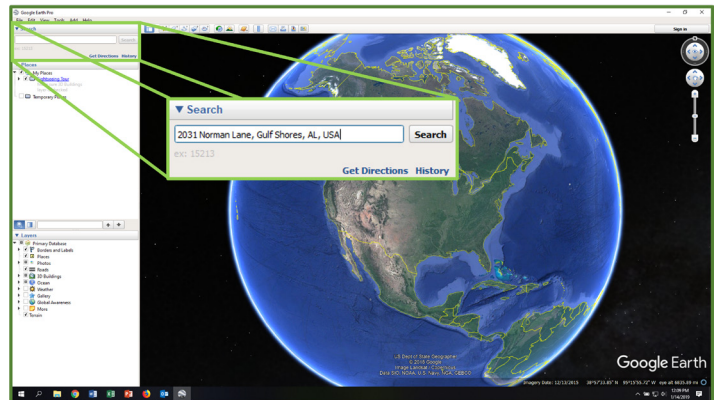
- Google Earth
- PowerPoint

How to Download Google Earth

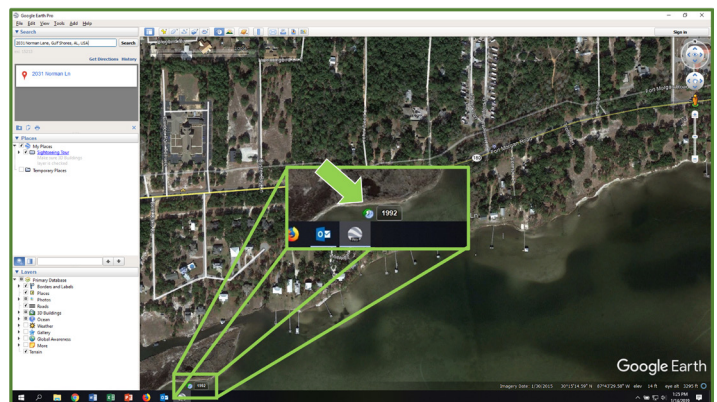
1. Go to www.google.com/earth. This example uses Google Chrome, but other browsers will also work.
2. Select Earth Versions.
3. Select Google Earth Pro on desktop.
4. Select Download Earth Pro on desktop.
5. Select Accept & Download.
6. Click the execute command and select Yes to allow changes to your computer.

Welcome to Google Earth!

1. Enter a location into the search bar.



2. Go back in time. In this example, 1992 is the date chosen.

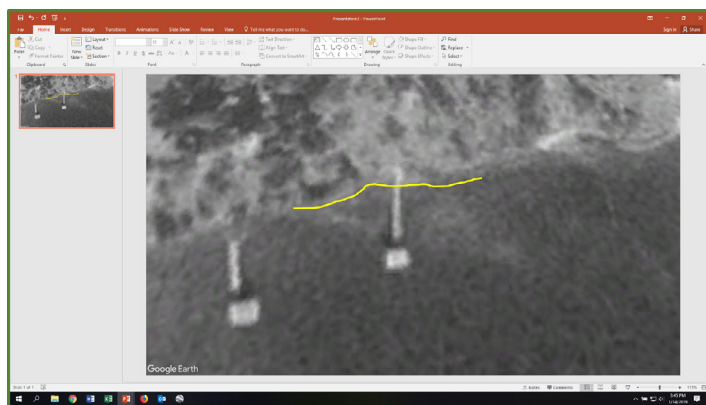


3. Zoom in as much as possible while still being able to discern the shoreline.
 - a. You can zoom in by pressing the plus button, scrolling up with the mouse wheel, or zooming in on a touchpad.

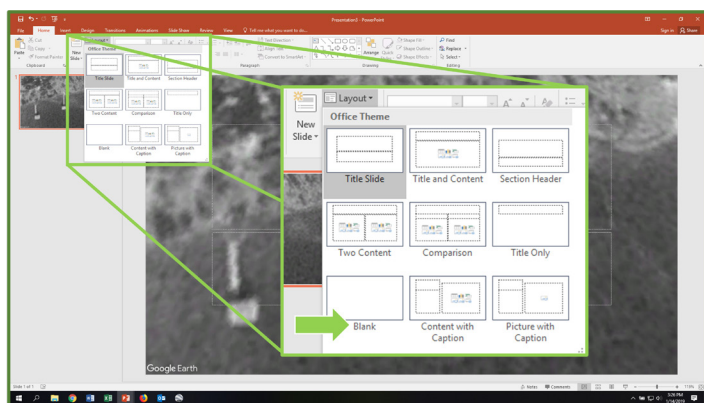
4. Save the zoomed-in image. Be sure to include the year in the name of the picture file!



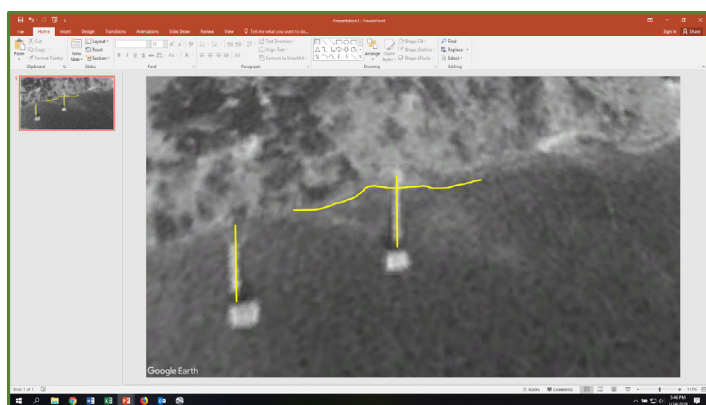
- b. Use your mouse to draw along the shoreline.



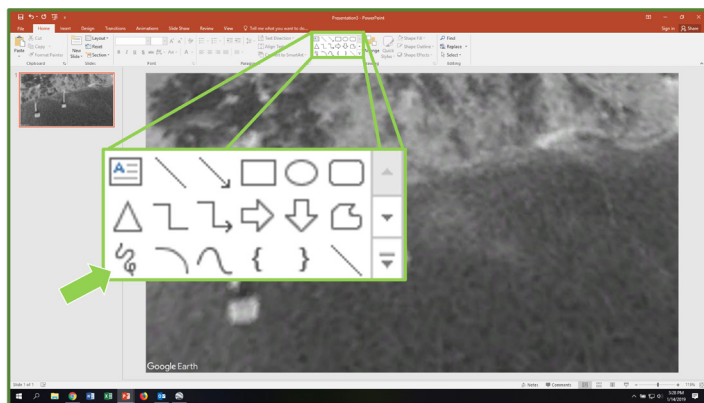
5. Set the picture as the slide background in PowerPoint.
 - a. Select Format Background.
 - b. Select Picture or texture fill, and then, under Insert picture from, choose File.
6. Get rid of text boxes.
 - a. Choose Layout.
 - b. Choose the blank slide option.



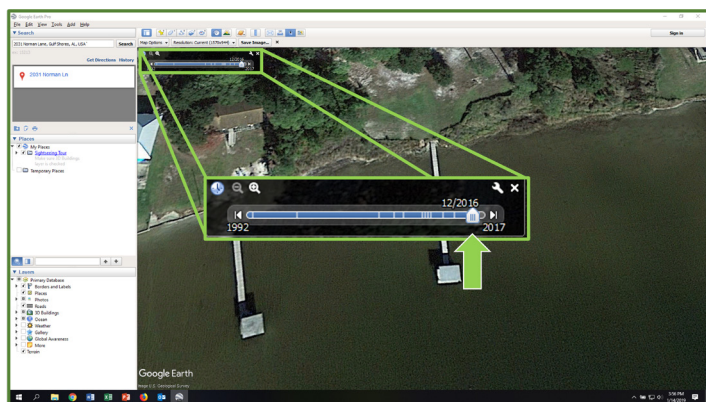
- c. To change the color and width of the line, choose Format Shape.
8. Trace reference lines.



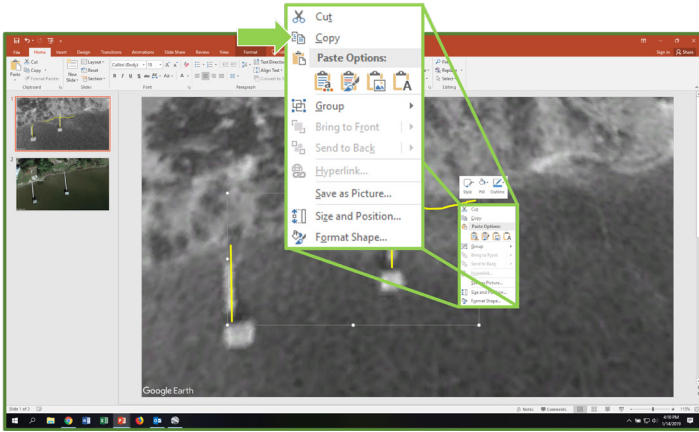
7. Trace the shoreline.
 - a. Choose the free draw tool.



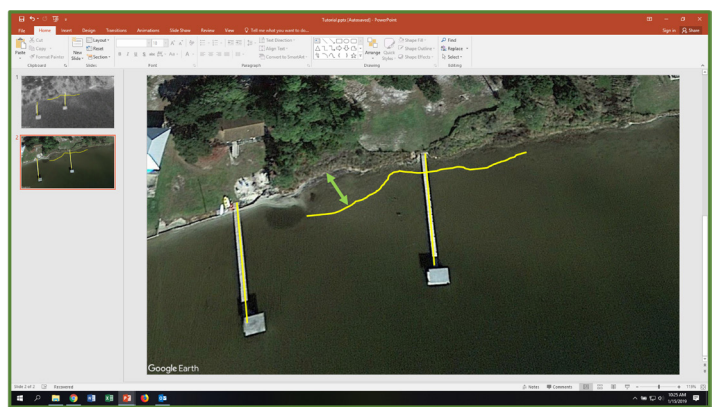
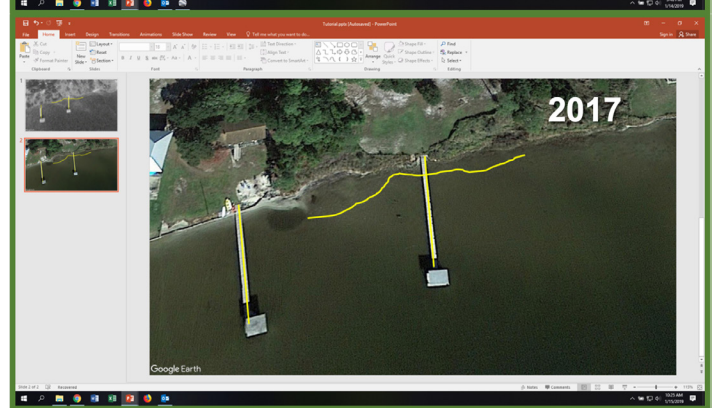
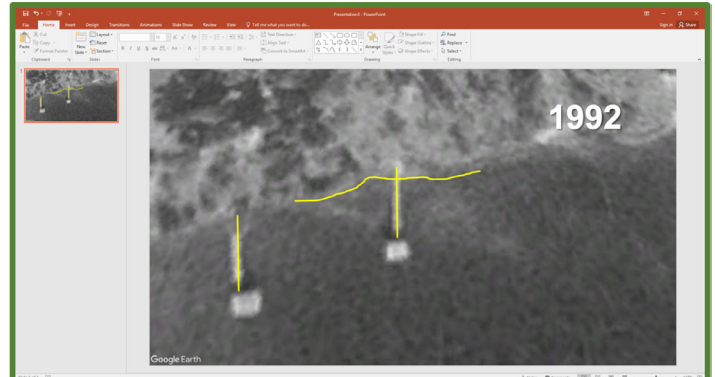
9. Group the tracings together.
 - a. Select all by holding down shift and clicking each.
 - b. Choose Arrange, and then Group.
10. Save a later image from Google Earth.



11. Set the second image as the background on a new PowerPoint slide. (See step 5 for instructions.)
12. Add the shoreline tracings from the first image to the second image.
 - a. Select the tracings in the first image, and then select Copy.
 - b. Go to the new image and paste.



13. Use your reference lines to adjust your shoreline tracing.
 - a. Use the rotate button to rotate the image by dragging in the direction needed to line up your reference lines.
 - b. By dragging the dots, you can change the shape, width, and height of the grouping.
14. How to interpret the pictures: The space between the shoreline tracing and the more recent shoreline is the area of erosion.



For more information

Visit <http://masgc.org/living-shorelines> or email eric.sparks@msstate.edu.



The information given here is for educational purposes only. References to commercial products, trade names, or suppliers are made with the understanding that no endorsement is implied and that no discrimination against other products or suppliers is intended.

Publication 3357 (POD-05-22) MASGP-19-029

By **Sara Martin**, Extension Associate, and **Eric Sparks**, PhD, Associate Extension Professor and Director, Coastal and Marine Extension Program.

Copyright 2022 by Mississippi State University. All rights reserved. This publication may be copied and distributed without alteration for nonprofit educational purposes provided that credit is given to the Mississippi State University Extension Service.

Produced by Agricultural Communications.

Mississippi State University is an equal opportunity institution. Discrimination in university employment, programs, or activities based on race, color, ethnicity, sex, pregnancy, religion, national origin, disability, age, sexual orientation, gender identity, genetic information, status as a U.S. veteran, or any other status protected by applicable law is prohibited.

Extension Service of Mississippi State University, cooperating with U.S. Department of Agriculture. Published in furtherance of Acts of Congress, May 8 and June 30, 1914. STEVE MARTIN, Interim Director